

YAMAHA RHINO **REAR BUMPER**

PART # 100556

Kit Components:

<u>Qty</u>	<u>Part Description</u>
1.....	Rear Bumper
4.....	Tube Caps
4.....	5/16" x 2.0" HSBH BOLT
4.....	5/16" SAE Flat Washer
4.....	5/16" Nylock Nut
4.....	5/16" USS Flat Washer

INSTALLATION INSTRUCTIONS:

1. Begin removing the rubber bed liner from your box to eliminate the mistake of drilling through it.
2. Place the supplied cut template into location on the rear box channel support and line up the two center large holes with the holes on the Rhino's channel. (Figure 1) Tape the template into location and check straightness with the rhino box and that it is centered from left to right of the machine. Once everything is centered and located correctly mark the 4 outside holes with a marker or center punch.
3. Drill the 4 marked holes all the way through the bottom channel and box.
4. Place the bumper into location as shown in Figure 1 and assemble using the hardware supplied. Use the larger washers on the top as shown in Figure 2 and 3.
5. Replace your Rubber bed liner

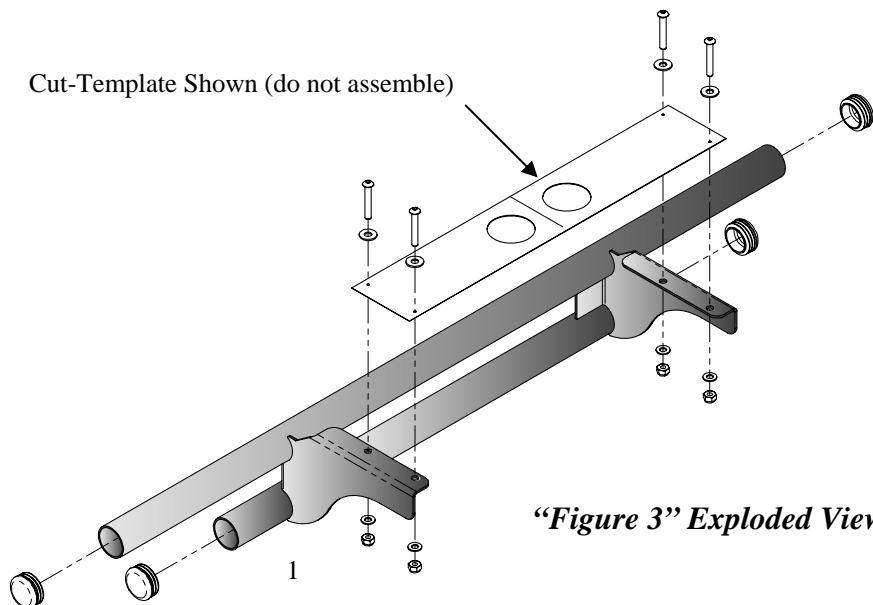


“Figure 1” Under Side



“Figure 2” Upper Side

Cut-Template Shown (do not assemble)



“Figure 3” Exploded View

