

2009-2014 Polaris RANGER

Standard Winch Mount

Part #: 100760
 Hardware Kit: HK-038, HK-031

Contents:

- 1x 100760 Winch Mount Plate
- Hardware Kit:
- 2x 5/16"-18 x 1" Hex Flange Bolt
 - 2x 5/16"-18 Hex Nylock Nut
 - 2x 5/16" SAE Flat Washer
 - 3x 3/8"-16 x 1" Short-neck Carriage Bolt
 - 3x 3/8"-16 Hex Nylock Nut
 - 3x 3/8" SAE Flat Washer
 - 4x #8-16 Pan Head Screw Self-Tapping Screw
 - 1x 22-18GA Spade Insulated Terminal
 - 1x HK-031 (UTV Mini-Rocker Hardware)

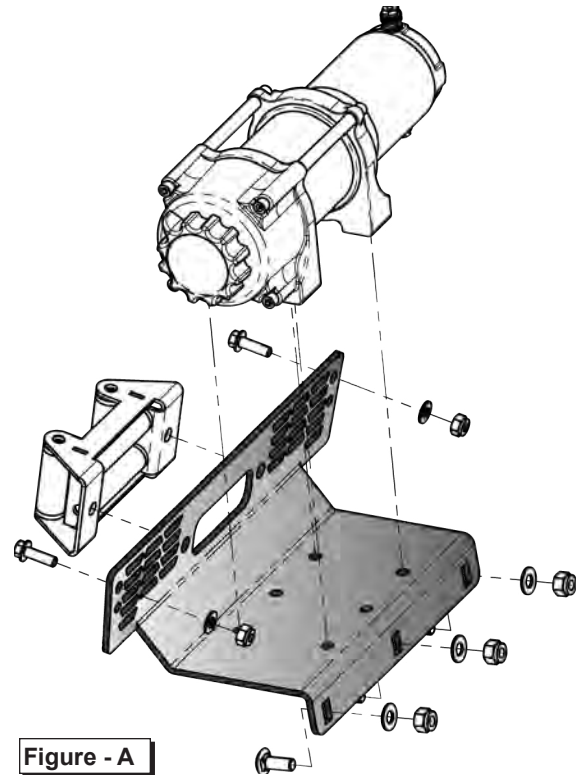


Figure - A

INSTALLATION INSTRUCTIONS:

PREPARE MACHINE

1. Begin by turning the vehicle off and disconnecting battery cables. Locate the battery compartment, usually under the hood; or for the 2014 RANGER 800 4x4 under the driver seat, or 2014 RANGER 800 CREW under the rear driver-side seat. First remove the ground, then positive terminal.

CONTACTOR

2. Find the location on the passenger side under the hood compartment marked "Winch Contactor" (**Figure 1**). Fasten contactor block using (4X) #8 Self Tapping Screws included with hardware kit.

Note: This location is set up for a standard contactor and some may not work with this bolt pattern but can be mounted in the general area.

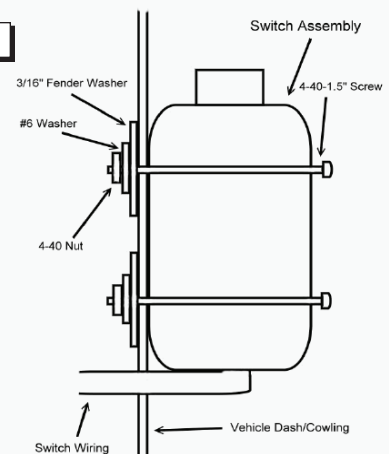


Figure - 1

SWITCH

3. Use included Mini-Rocker Switch Hardware Kit (HK-031) to fasten a handle bar mounted mini-rocker switch to the dash or any desired location.
 - a. Remove handlebar mount hardware from the switch.
 - b. Locate desired mounting location.
 - c. Mark & drill 2 switch holes thru dash using switch housing as a template.
 - d. Drill a 3rd hole for switch wiring.
 - e. Assemble per **Figure 2**.

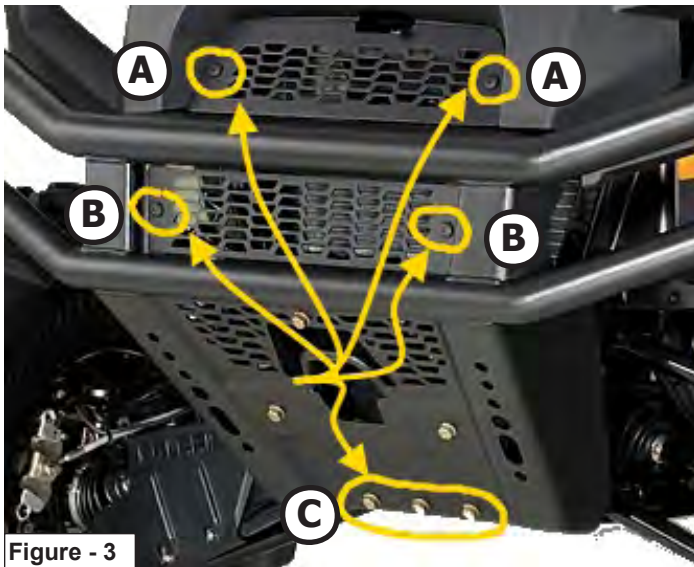
Figure - 2



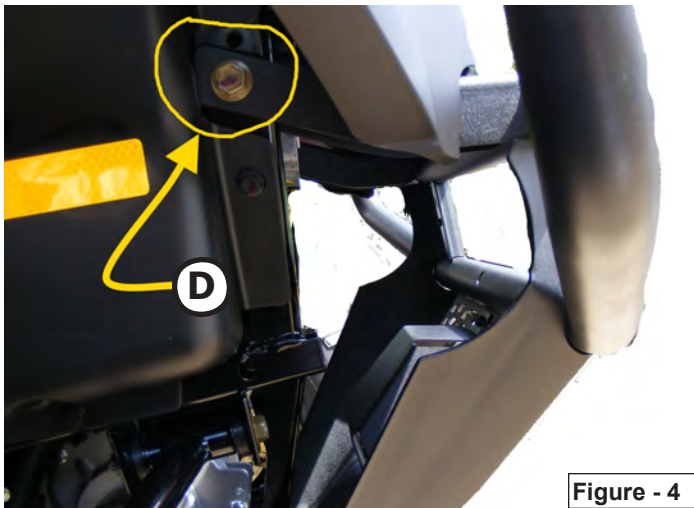
Optional Switch Mount Instructions*

REMOVE BUMPER

- Begin by removing the 4 Torx screws at locations (A) & (B) from the front and upper grills on the bumper frame as shown in **Figure 3**. Retain the upper grill (A). Discard or set aside the front grill (B). Then remove the three bolts (C) at the bottom of the frame (see **Figure 3**).

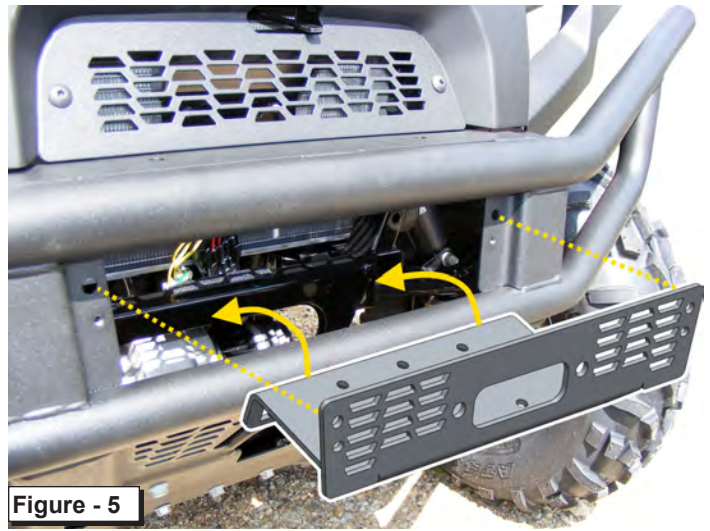


- Remove 2 bolts (D) from the driver & passenger side of the bumper as shown in **Figure 4**. Next remove the entire bumper from the machine.



ASSEMBLE WINCH MOUNT TO BUMPER

- Attach your roller/hawse fairlead to the winch mount as shown in **Figure A**; fasten using hardware supplied with your winch.
- Place the winch mount into location on the bumper as shown in **Figure 5** by passing the winch mount through the front grill pocket and fasten using supplied 5/16" hardware and the 2 Torx screws (B) removed previously.

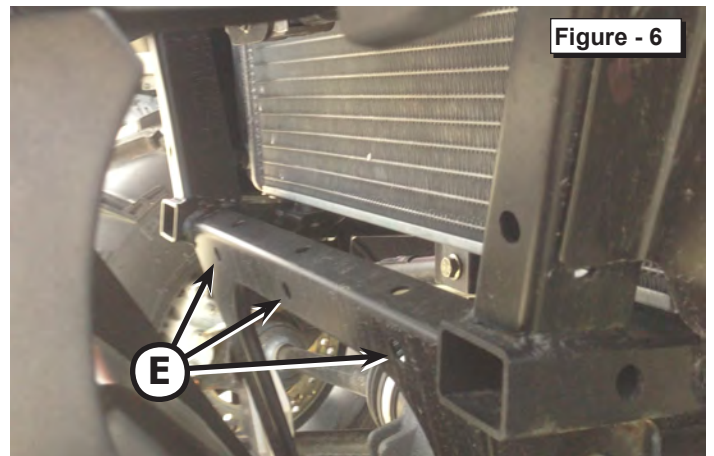


ASSEMBLE WINCH TO MOUNT

- IF YOU HAVE A 2014 RANGER 800 4X4/CREW ONLY:
Connect the shortest wires (usually RED & BLACK) to the motor end of the winch per the ALTERNATE WIRING DIAGRAM shown in **Figure 11** (pg 4). Connect BLACK wire to NEG(-) BLUE winch post; connect RED wire to POS(+) YELLOW winch post.
- For all other supported RANGER models:
Connect the longest wires (usually BLUE & YELLOW) to the motor end of the winch per your Winch's Instruction manual.
- Assemble your winch to the mount plate as shown in **Figure A**, using the hardware supplied with your winch (pg1). Also, feed a short length of cable through the fairlead and attach the cable hook.

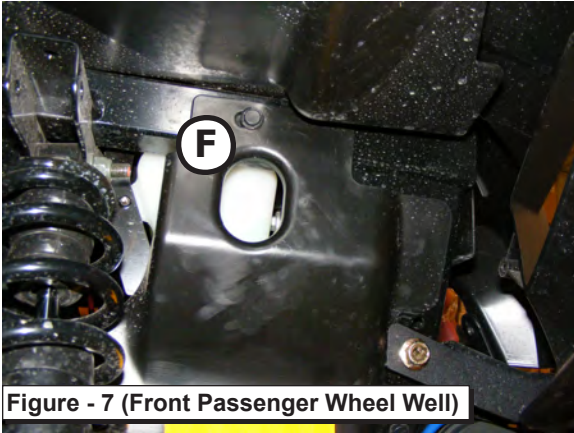
REASSEMBLE FRAME

- Reassemble the bumper to the frame by loosely re-fastening the hardware (C & D) removed in Steps 4 & 5.
- Attach the back of the winch mount to the three holes (E) in the frame using the supplied 3/8" carriage bolts (see **Figure 6**). Only the two outer most bolts are required.



WIRING INSTRUCTIONS

- Route winch wires to the hood compartment, passing through an outlet (F) shown in **Figure 7**. DO NOT connect wires to contactor at this time.



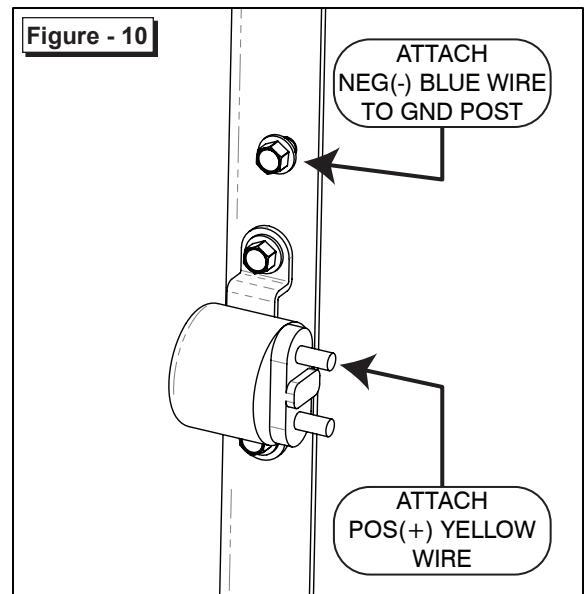
- Replace the upper grill removed in Step 4.
- Wire the red ignition wires for a mini-rocker switch or other controller to the terminal with the Orange and White wires under the hood as shown in **Figure 8** using the supplied 22-18GA Spade Insulated Terminal.



- If you have a 2014 RANGER 800 4X4/CREW, go to Step 19, otherwise proceed to Step 18.
- Connect winch, battery, and remaining switch wiring to your contactor per your winch's instruction manual.

FOR 2014 RANGER 800's ONLY:

- 2014 RANGER 800 CREW model will require the extended 11" cables included with the Crew Kit (KFI#: UTV-WEK, sold separately).
- Locate starter solenoid next to battery as shown in **Figure 9**. Using the ALTERNATE WIRING DIAGRAM (**Figure 11**, pg 4) as a guide, attach the YELLOW POS(+) wire to the battery fed solenoid as shown in **Figure 10**. Then, attach the BLUE NEG(-) wire to the ground post as shown in **Figure 10**.

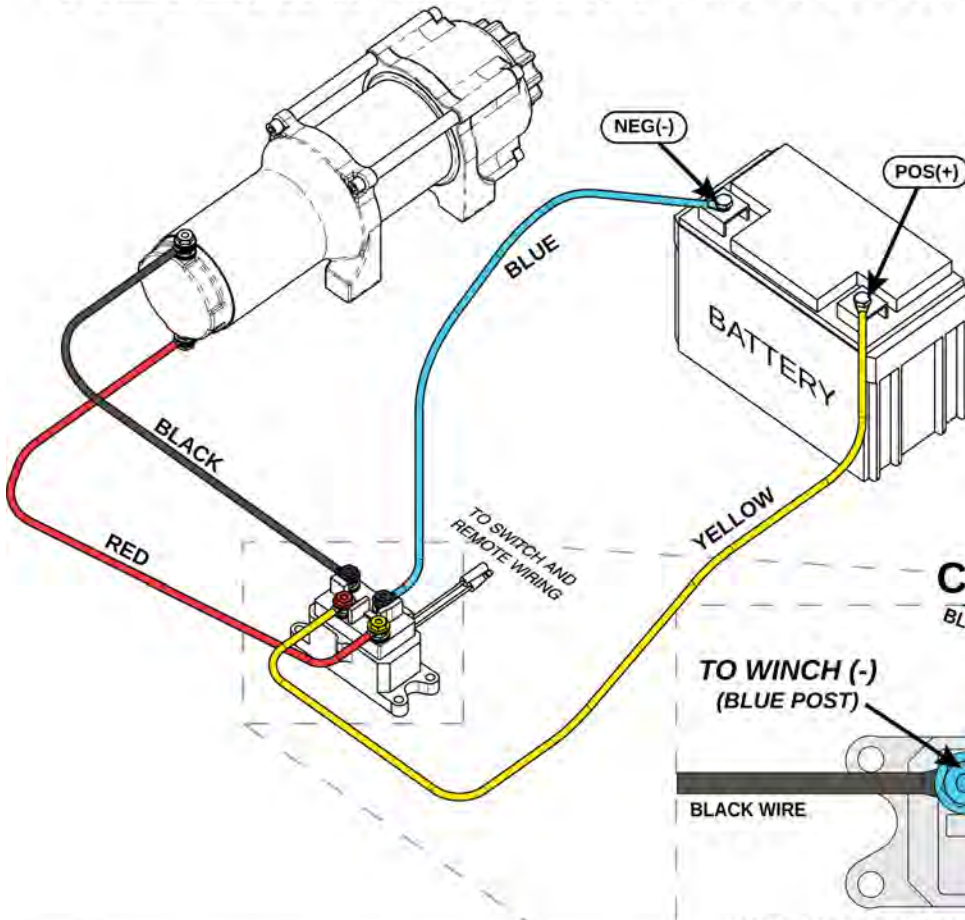


- Route the longest wires (usually BLUE & YELLOW) included with your winch from the solenoid to the contactor location. Connect wires to contactor according to **ALTERNATE WINCH WIRING DIAGRAM** shown in **Figure 11**, - NOT according to the color coding.
- Secure all wires and reconnect battery positive & ground cable.

Note: Battery shown in this diagram represents a *battery fed source*. Depending on your vehicle configuration, power leads may attach to a primary/secondary battery or starter solenoid. Follow all vehicle specific installation instructions.

Figure - 11

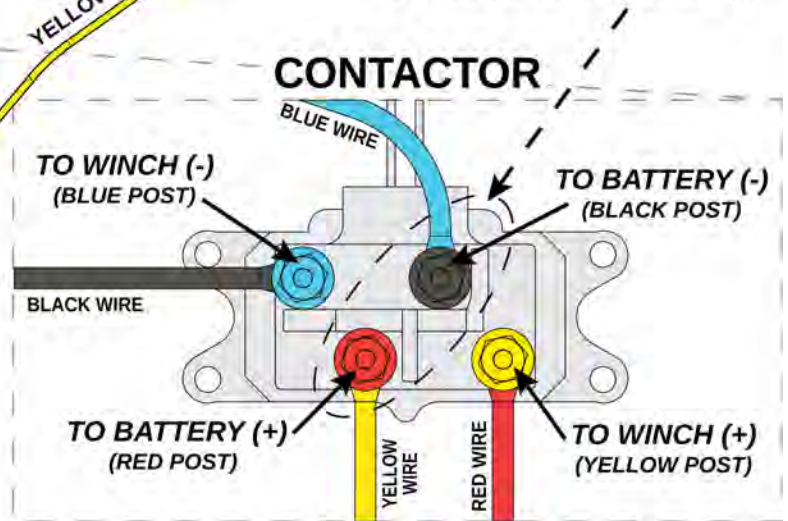
ALTERNATE WINCH WIRING DIAGRAM



* For use with ATV/UTV applications where contactor cannot be located close to vehicle battery.

* Run shortest wires, usually red & black from contactor to winch; run longest wires, usually blue & yellow from contactor to battery.

CAUTION
These two posts must be wired to the battery!



CAUTION
FAILURE TO FOLLOW WIRING DIRECTIONS AS SHOWN MAY RESULT IN DAMAGE TO YOUR WIRING SYSTEM OR EQUIPMENT.

- WIRE WINCH NEGATIVE (BLACK WIRE) TO --> BLUE CONTACTOR POST
- WIRE WINCH POSITIVE (RED WIRE) TO --> YELLOW CONTACTOR POST
- WIRE BATTERY NEGATIVE (BLUE WIRE) TO --> BLACK CONTACTOR POST
- WIRE BATTERY POSITIVE (YELLOW WIRE) TO --> RED CONTACTOR POST

