

JCB WORKMAX

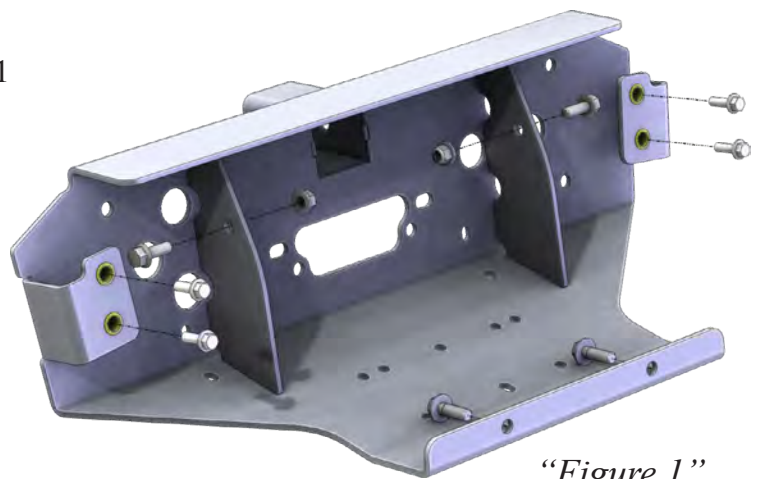
Winch Mount

PART # 100960

Hardware Kit: HK-098, HK-031

Kit Components:

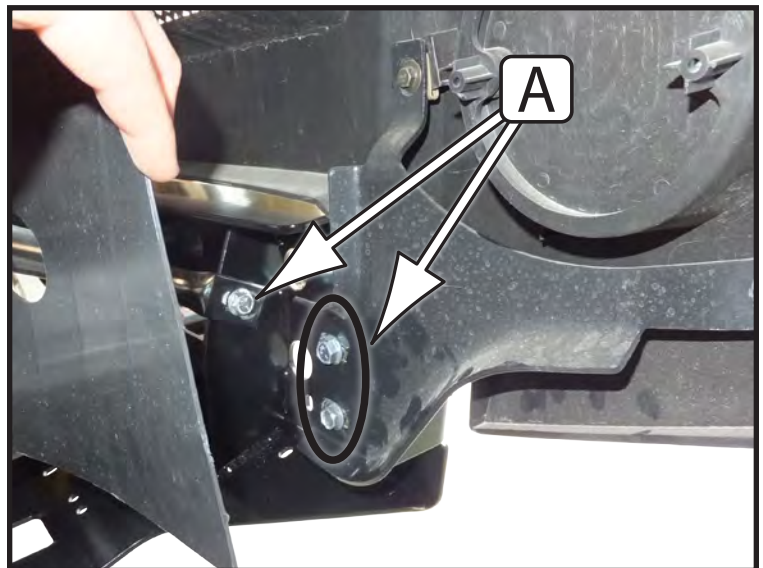
Qty.	Part Description
1.....	Winch Mount Plate
2.....	M10-1.25mm X 30mm Hex Flange Bolt
4.....	5/16"-18 x 1" Hex Flange Bolt
2.....	3/8"-16 x 1" Hex Flange Bolt
2.....	3/8"-16 Nylock Hex Flange Nut
1.....	UTV Mini Rocker Kit (HK-031)



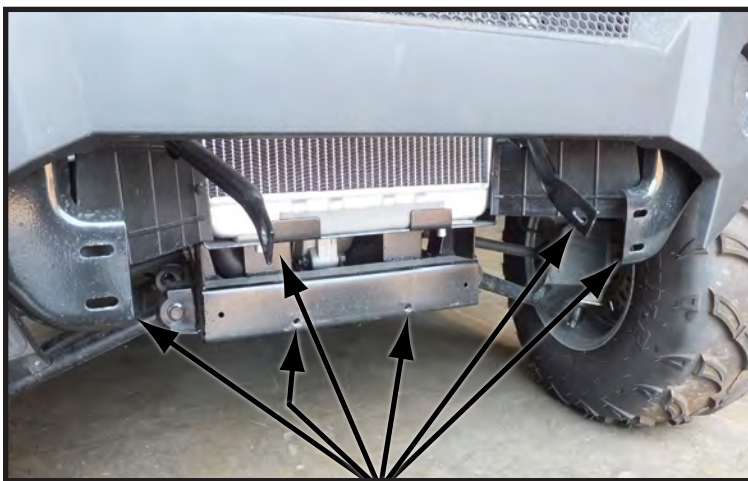
"Figure 1"

INSTALLATION INSTRUCTIONS:

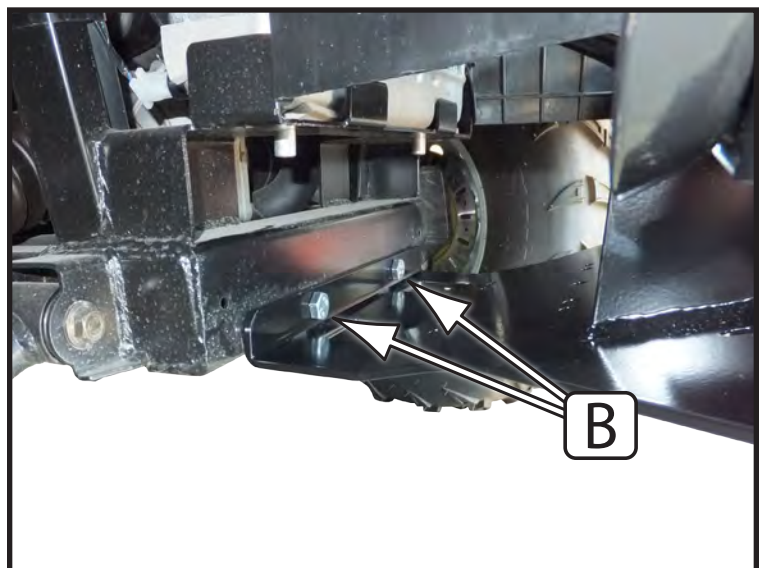
1. Take off the front bumper by removing Bolts (A) as shown in Figure 2. These are located just behind the plastic front fender just below the fog light locations. Remove Bolts (B) as shown in Figure 3.
2. You will be using the same mounting locations to install the winch mount. See Figure 4 for locations.



"Figure 2" Stock Plate Removal



"Figure 4" Mounting Points



"Figure 3" Stock Plate Removal

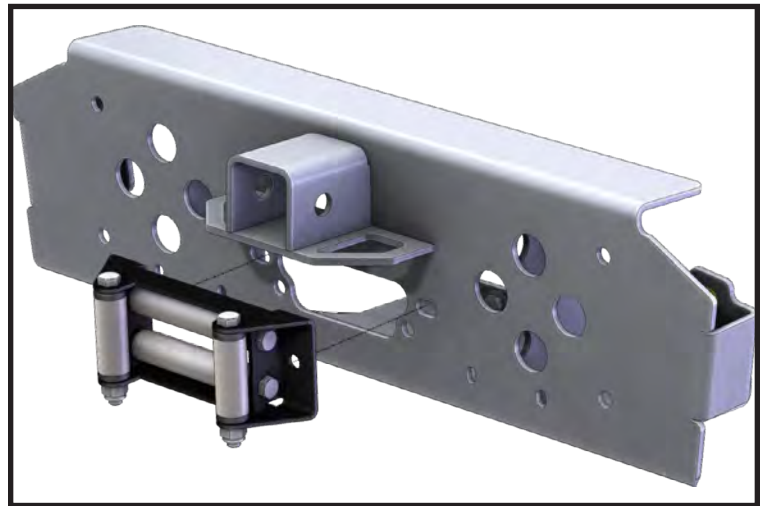
3. Install roller fairlead to the winch mount using the hardware included with your winch. (See Figure 5)

Note: Wide roller fairleads will use the top hole locations and Standard roller fairleads will use the bottom hole locations. (See Figure 5)

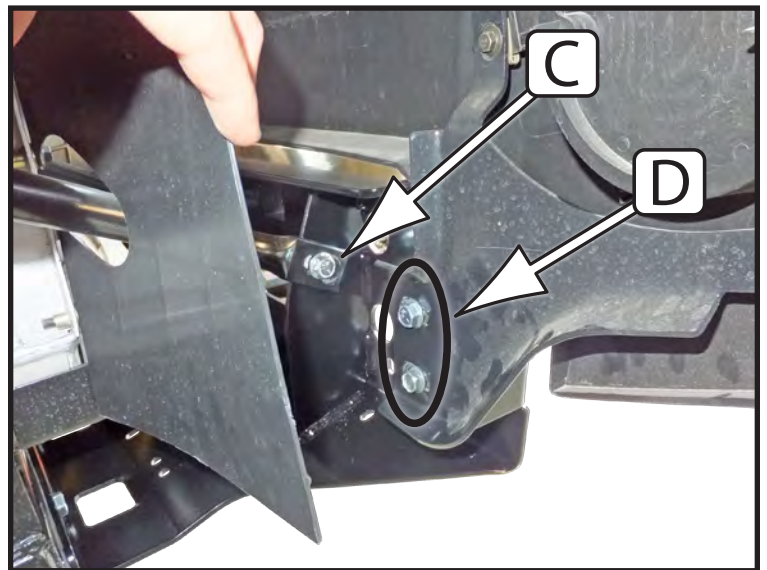
4. Place mount into position. Loosely install 3/8" bolts and nuts to location (C) on both sides as shown in Figure 6.

Note: The bars may be wider than the mounting locations this is normal as they will pull in when you tighten the bolts.

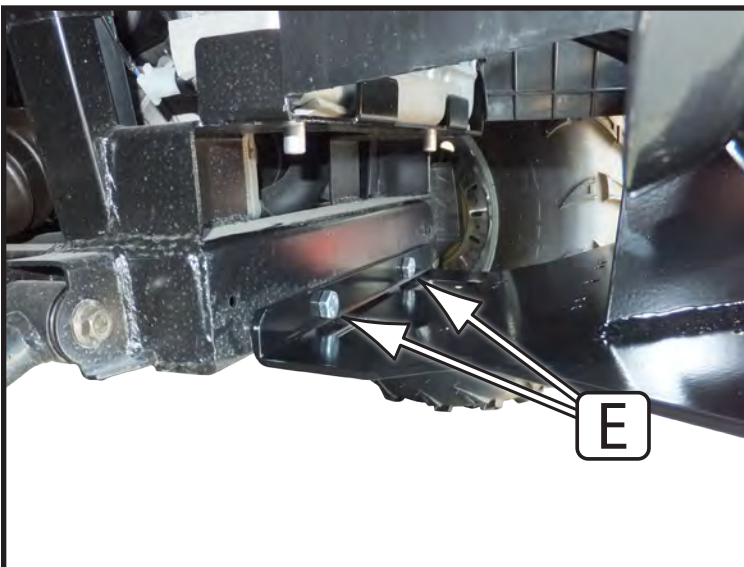
5. Install rear mount locations using the M10 bolts (E) that are provided with the winch mount. (See Figure 7)
6. Install the remaining 5/16 bolts (D) on both sides as shown in Figure 6.
7. Tighten all bolts.
8. Install your winch to the mount plate using the hardware provided with your winch. See Figure 8.
9. Use the instructions provided with your winch, wire accordingly.



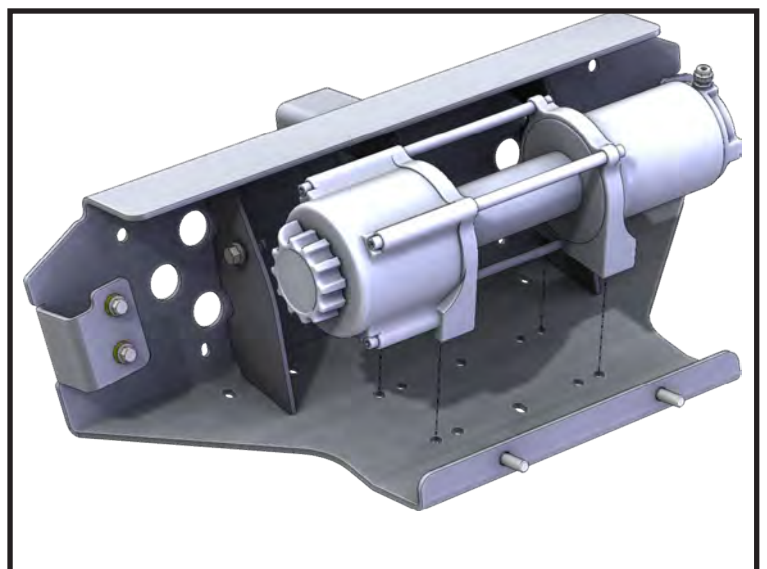
“Figure 5” Roller Fairlead Install



“Figure 6” Front Bolts Install



“Figure 7” Rear Bolt Install



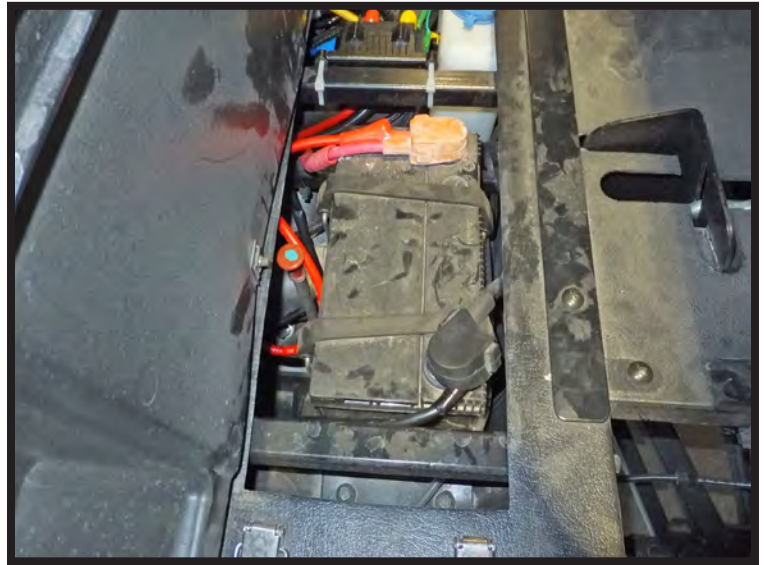
“Figure 8” Winch Install

WIRING INFORMATION

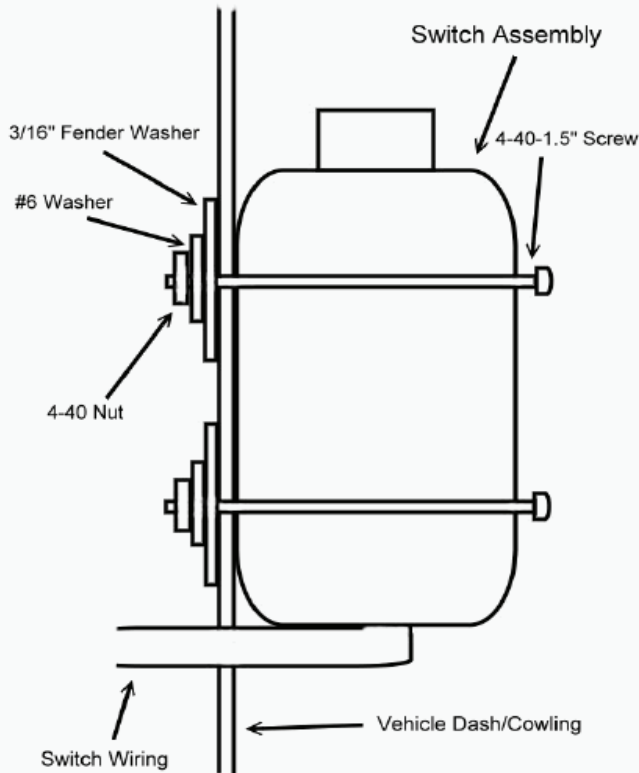
1. For contactor location please see “Figure 9”. This is located beneath the dump box, under a service flap.
2. Mini-Rocker Switch Hardware kit. This allows you to mount your usual handle bar mounted switch to almost any desired location.
 - a. Remove handlebar mount hardware from the switch.
 - b. Locate desired mounting location
 - c. Mark and drill two switch holes through dash using switch housing as a template
 - d. Drill a 3rd hole for the switch wiring.
 - e. Assemble per Figure 11.
3. Find a location that suits your purposes for the mini-rocker switch and hand remote.
4. Wire the red ignition wire from the controller to a keyed wire. Typically you can find this on the ignition switch.



“Figure 9” Contactor Location



*“Figure 10” Battery Location
(Battery is located under the dump box.)*



Optional Switch Mount Instructions*

“Figure 11” Mini-Rocker Mounting

