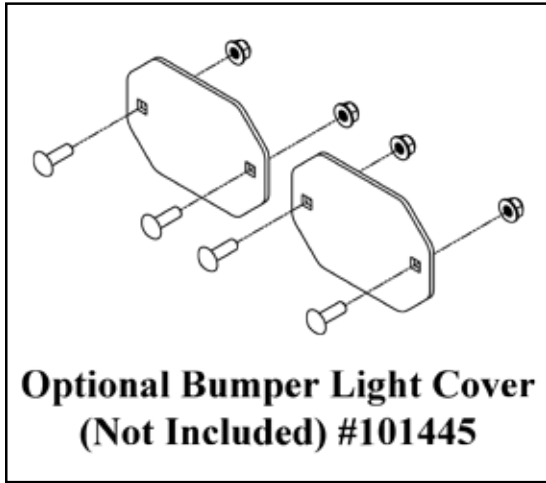
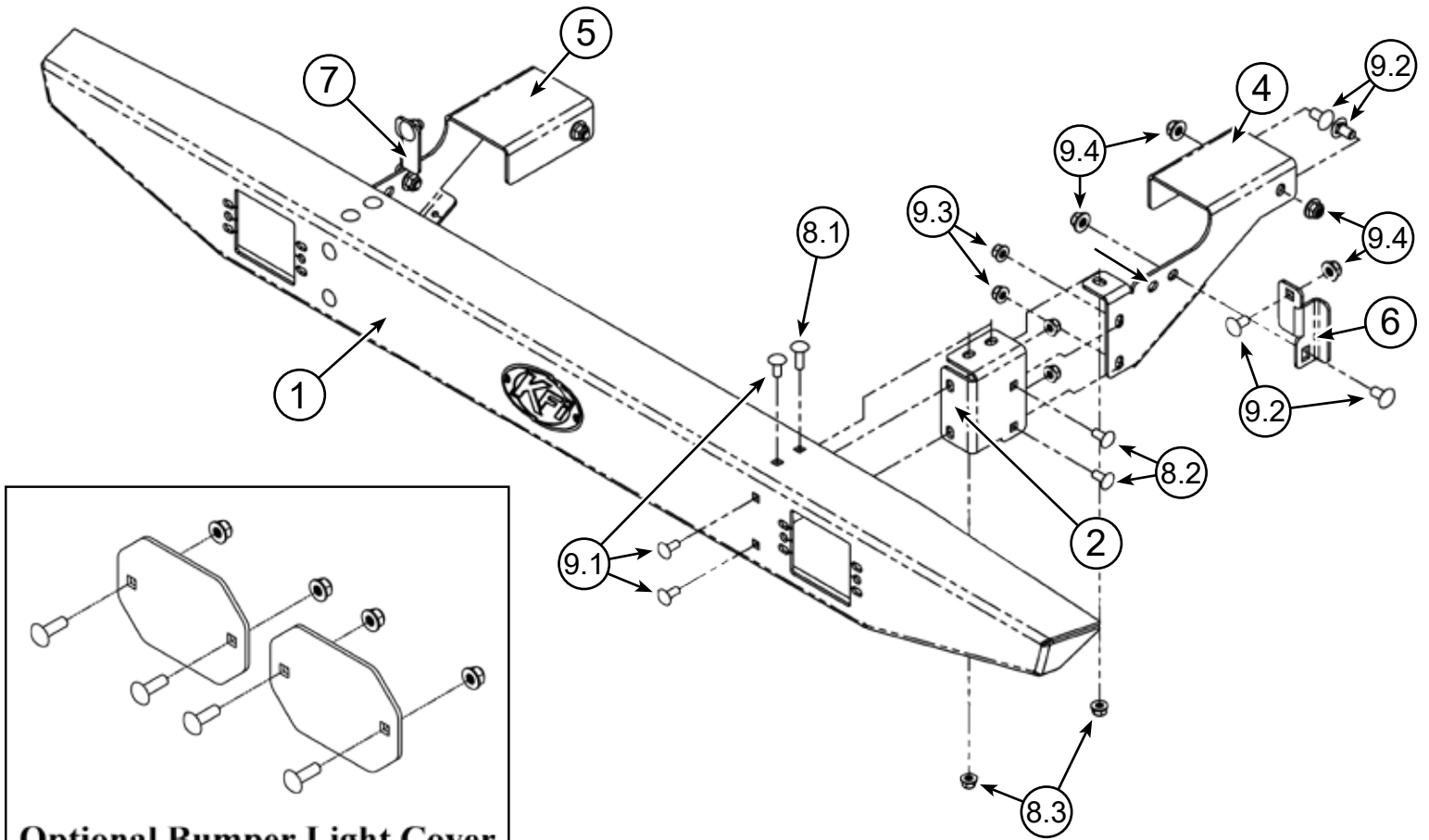


FULLSIZE RANGER

Rear Bumper

PART #101430



Not All Hardware Is Used

Kit Components:

Item #	Qty.	Description	Item #	Qty.	Description
1	1	Rear Bumper Formed Fullsize Ranger	8.2	4	5/16"-18 x .75 Carriage Bolt Short Neck GR5
2	1	Passenger Side Conversion Bracket	8.3	6	5/16"-18 Hex Nut Flange Nylock GR5
3	1	Driver Side Conversion Bracket (Not Shown)	9	1	Hardware Kit HK-344
4	1	Passenger Side Bumper Bracket	9.1	6	5/16"-18 x .75 Carriage Bolt Short Neck GR5 Black
5	1	Driver Side Bumper Bracket	9.2	8	3/8"-16 x .75 Carriage Bolt Short Neck GR5
6	1	Passenger Side Hanger Bracket	9.3	6	5/16"-18 Hex Nut Flange Nylock GR5
7	1	Driver Side Hanger Bracket	9.4	8	3/8"-16 Hex Nut Flange Nylock GR5
8	1	Hardware Kit HK-342	9.5	2	5/16"-18 x .75 Thread Cutting - Not Used
8.1	2	5/16"-18 x 1.00 Carriage Bolt Short Neck GR5 Black	9.6	2	1/4"-20 x .75 Thread Cutting - Not Used



INSTALLATION INSTRUCTIONS

Note: Make sure all hardware needed to complete this mount is in the package. Thoroughly read through and understand the instructions before installing.

1. Each step must be mirrored on both sides of the machine.
2. Hold the Passenger Side Bumper Bracket (4) in place outside the bed hinge and use bolts (9.2) and nuts (9.4) to bolt the bracket to the bed hinge as shown in the **Figure 1**. Use 2 bolts per bracket.
3. Once the Bumper Bracket is in place, use passenger side hanger bracket (6) to secure the bumper bracket (4) to the machine using 2 bolts (9.2) and nuts (9.4) per hanger as shown in **Figure 1**.

Note: Pay attention to the wires near these brackets. Make sure that they don't get damaged during installation.

4. To assemble the bumper, locate the Formed Bumper (1) and Conversion Brackets (2 & 3). Install the Conversion Brackets onto the inside of the Formed Bumper with 3 black carriage bolts (9.1) and lock nuts (8.3) per side as shown at the top of **Figure 2**.
5. Set the Bumper Assembly onto the Bumper Brackets (4 & 5) and secure using bolts (8.1 & 8.2) and nuts (9.3) as shown in the bottom of **Figure 2**.
6. Level bumper and tighten all hardware evenly.

Note: The zip tie locations (Figure 2) can be used to secure the wires for cube lights.

