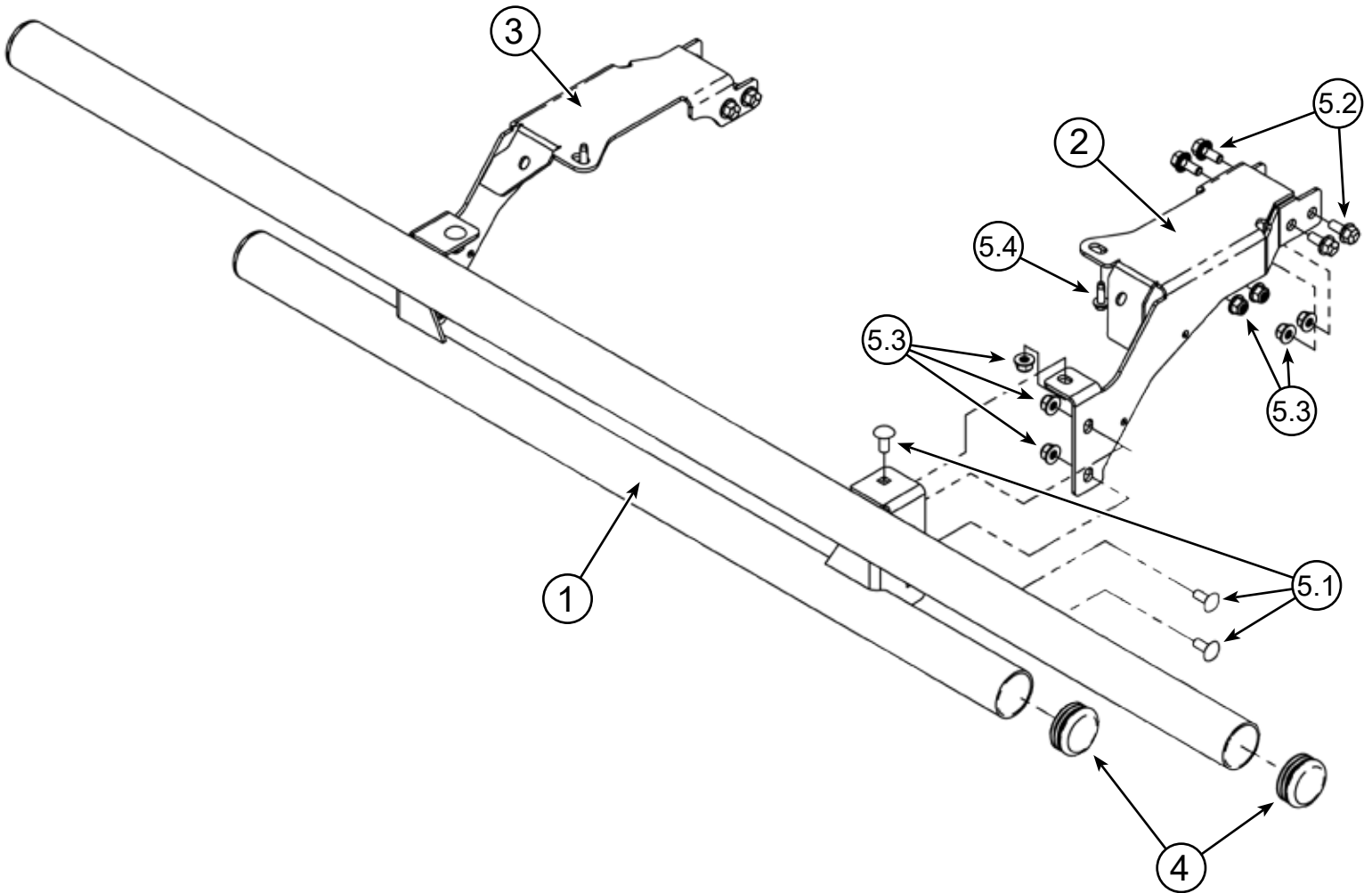


# POLARIS RANGER 1000

Tube Bumper PART #102075



## Kit Components:

Item #	Qty.	Description	Item #	Qty.	Description
1	1	Tubular Rear Bumper	5.1	6	5/16"-18 X .75 Carriage Bolt Short Neck GR5 Black
2	1	Bumper Bracket (Passenger's Side)	5.2	8	5/16"-18 X .75 Hex Bolt Flange GR5 Serrated
3	1	Bumper Bracket (Driver's Side)	5.3	14	5/16"-18 Hex Nut Flange Nylock GR5
4	4	Bumper Tube Cap	5.4	2	5/16"-18 X .75 Hex Bolt Flange Thread Cutting
5	1	Hardware Kit (HK-343)	*5.5*	2	1/4"-20 X .75 Hex Bolt Flange *Not Used*



# INSTALLATION INSTRUCTIONS

**Note:** Make sure all hardware needed to complete this mount is in the package. Thoroughly read through and understand the instructions before installing.

1. Each step must be mirrored on both sides of the machine.
2. Assemble bumper tube caps (4) as shown in the **Exploded Diagram**.
3. Hold the Passenger Side Bumper Bracket (2) in place outside the bed hinge and use bolts (5.2) and nuts (5.3) to bolt the brackets to the bed hinge as shown in **Figure 1**. Repeat this step for the Driver Side Bumper Bracket (3). Use 4 bolts per side.
4. Once both Bumper Brackets are in place, use the 5/16" self tapping screw (5.4) to secure the rear portion of the Bumper Brackets. This screw should be hand tightened only or you could strip it out. See **Figure 1**.
5. Set rear bumper (1) onto bumper brackets (2 & 3) and secure using carriage bolts (5.1) and nuts (5.3) as shown in **Figure 2**.
6. Tighten all hardware evenly.

