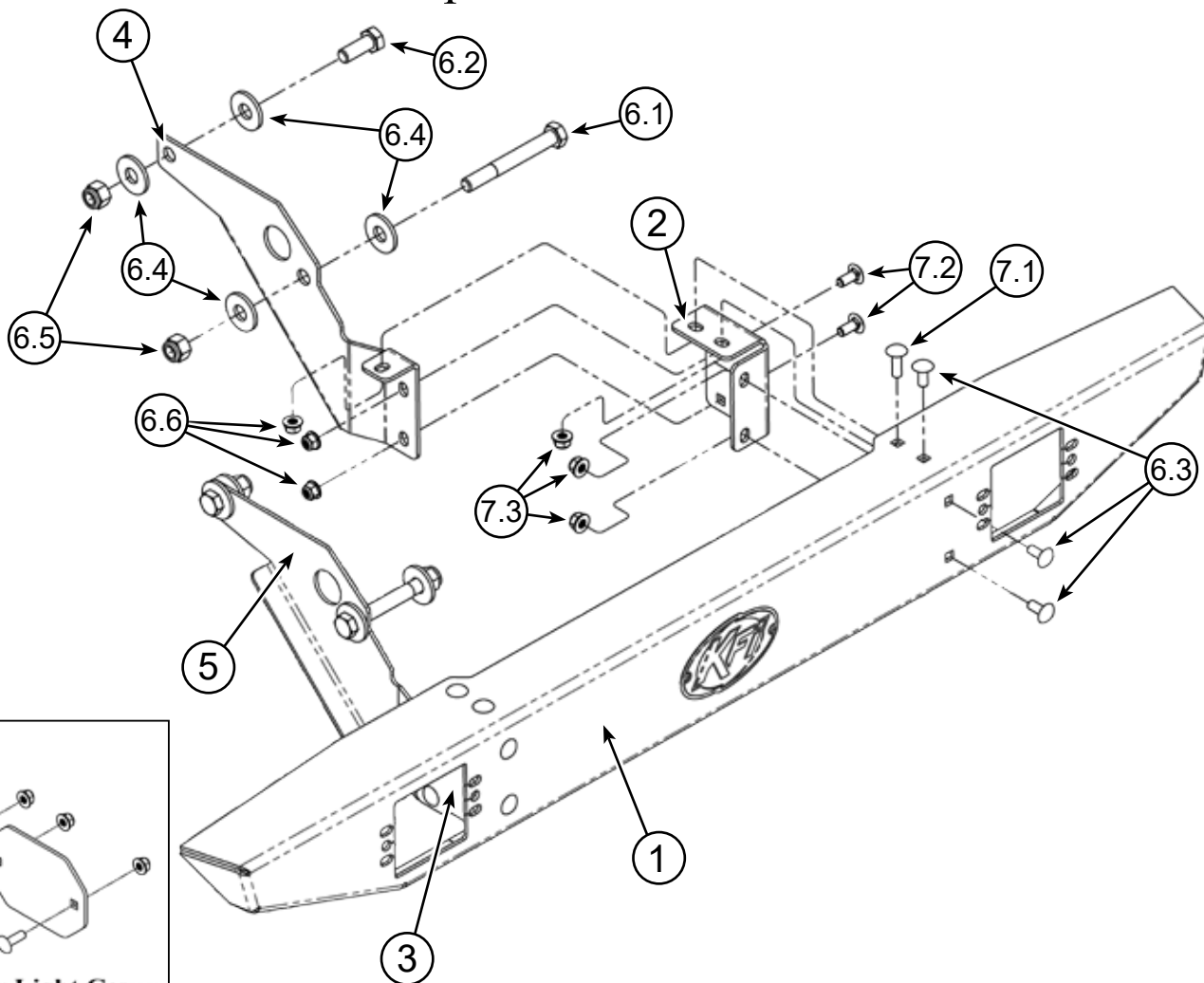


# HONDA PIONEER 520

## Formed Bumper PART #102135



**Optional Bumper Light Cover  
(Not Included) #101445**

### Kit Components:

Item #	Qty.	Description	Item #	Qty.	Description
1	1	Rear Bumper Formed	6.3	6	5/16"-18 X .75" Carriage Bolt Short Neck GR5 Black
2	1	Rear Bumper Bracket Formed Passenger	6.4	8	1/2" Flat Washer USS
3	1	Rear Bumper Bracket Formed Driver	6.5	4	1/2"-13 Hex Nut Nylock GR5
4	1	Passenger Side Bumper Mount	6.6	6	5/16"-18 Hex Nut Flange Nylock GR5
5	1	Driver Side Bumper Mount	7	1	Hardware Kit HK-342
6	1	Hardware Kit HK-405	7.1	2	5/16"-18 X 1.00" Carriage Bolt Short Neck GR5 Black
6.1	2	1/2"-13 X 4.00" Hex Bolt GR5	7.2	4	5/16"-18 X .75" Carriage Bolt Short Neck GR5
6.2	2	1/2"-13 X 1.25" Hex Bolt GR5	7.3	6	5/16"-18 Hex Nut Flange Nylock GR5



# INSTALLATION INSTRUCTIONS

**Note:** Make sure all hardware needed to complete this mount is in the package. Thoroughly read through and understand the instructions before installing.

1. Don't fully tighten hardware until all components are installed.
2. Remove hardware (A) from box hinge and wire harness clip (B) from box frame as shown in **Figure 1**. **NOTE:** Passenger side shown, repeat step 2 for driver side.
3. Slide bumper bracket (4) between the box hinge and wiring harness. Secure the rear of the bumper bracket using bolt (6.2), washers (6.4) on both sides, and nut (6.5). Secure the front of the bumper bracket using bolt (6.1), washers (6.4) on both sides, and nut (6.5) as shown in **Figure 2** and **The Exploded Diagram**. **NOTE:** Passenger side shown, repeat step 3 for driver side.
4. Re-attach wire harness clip (B) to the box frame.
5. To assemble bumper, locate the Formed Bumper (1) and Conversion Brackets (2 & 3). Install the Conversion Brackets onto the inside of the Formed Bumper with 3 black carriage bolts (6.3) and lock nuts (7.3) per side as shown at the top of **Figure 3**.
6. Set the Bumper Assembly onto the Bumper Brackets (4 & 5) and secure using bolts (7.1 & 7.2) and nuts (6.6) as shown in the bottom of **Figure 3**.
7. Level bumper and tighten all hardware evenly.
8. If purchased, attach Bumper Light Covers onto the bumper using the hardware provided with the covers.

