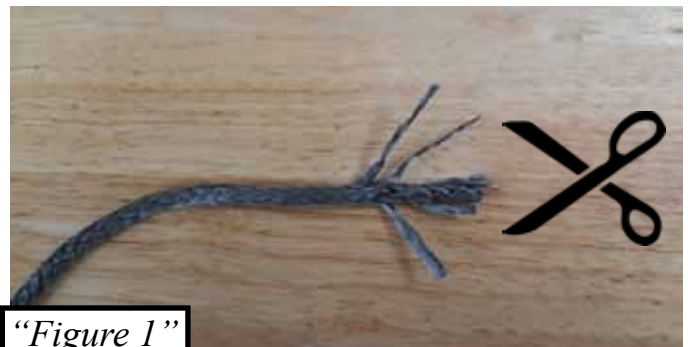


# PLOW STRAP

PART # 105100-R

## INSTALLATION:

1. Remove the synthetic rope/cable from your existing winch.
2. After cable is removed figure out which of the two styles you might have currently and follow the install instruction.
3. Figures 1&2 on the plow strap you will need to pull 4 or 5 strands out of the line and cut depending on the size of the hole on your spool. Taper the end of your synthetic line using electrical tape. Loosen the set screw on the inside off the spool and insert your line through it. Tighten down set screw or tie a knot at the end.
4. Figure 3 wrap the tag end of the line around the existing screw and washer. Pinch the synthetic line down under the washer.
5. Once you have attached the plow strap to the spool wrap the rest of it up stacking the strap on itself.



"Figure 1"



"Figure 2"



"Figure 3"