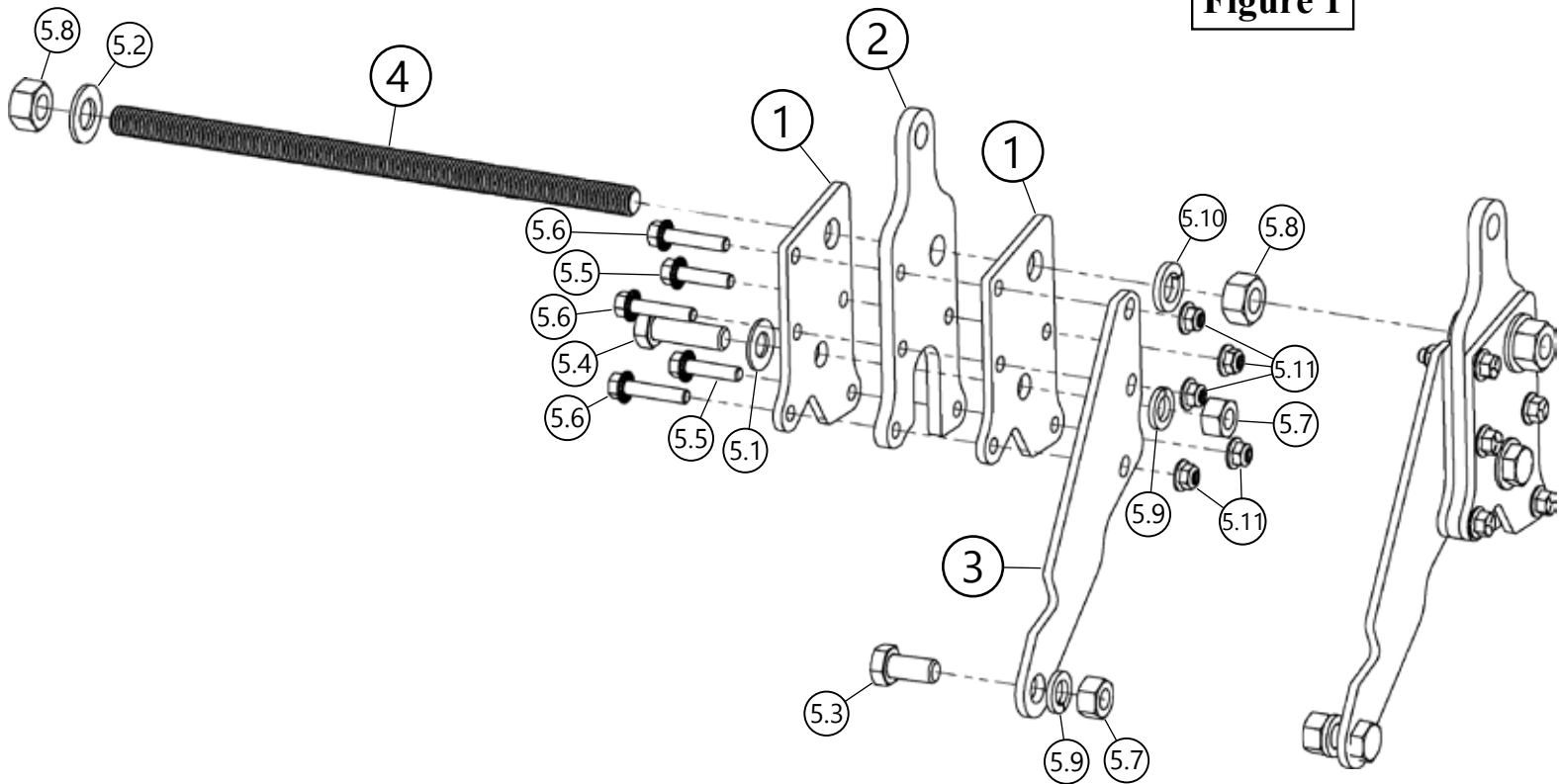


6" Plow Tube Level Kit

Plow Accessory

PART #105765

Figure 1



Item #	Qty.	Part #	Description
1	4	105227	PLT - 6" Tab Support
2	2	105712	PLT - 6" Leveling Tab
3	2	105979	PLT - 6" Leveling Brace
4	1	105226	3/4"-10 Threaded Rod
5	1	HK-320	Hardware Kit
5.1	2	---	5/8" Flat Washer
5.2	2	---	3/4" Flat Washer
5.3	2	---	5/8"-11 x 1.25 Hex Bolt

Item #	Qty.	Part #	Description
5.4	2	---	5/8"-11 x 2.00 Hex Bolt
5.5	4	---	3/8"-16 x 1.50 Hex Flange Bolt
5.6	6	---	3/8"-16 x 1.75 Hex Flange Bolt
5.7	4	---	5/8" -11 Hex Nut
5.8	4	---	3/4"-10 Hex Nut
5.9	4	---	5/8" Lock Washer
5.10	2	---	3/4" Lock Washer
5.11	10	---	3/8"-16 Hex Flange Nylock Nut



INSTALLATION INSTRUCTIONS

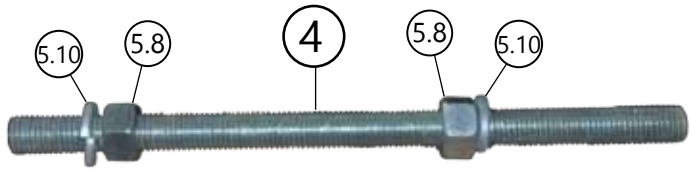
Important: Make sure all hardware needed to complete this mount is in the package. Thoroughly read through and understand the instructions before installing.

Note: This lift will only work with the updated UTV tube system (105635) it will not work with the old system (105235). See **Figure 2**.

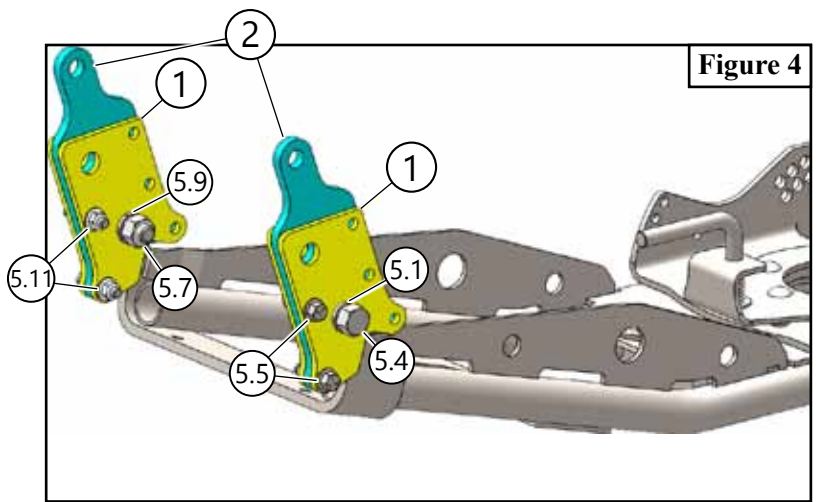
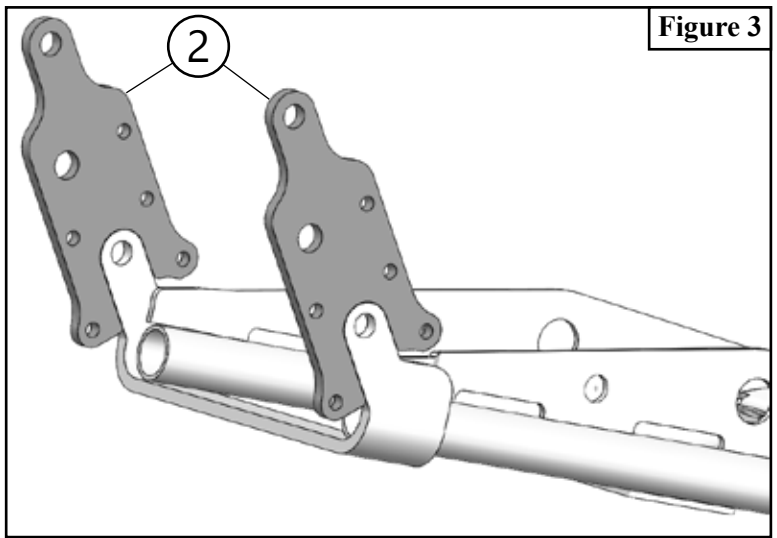
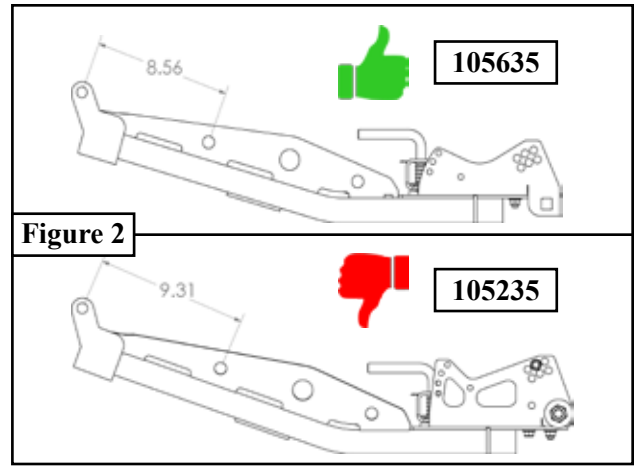
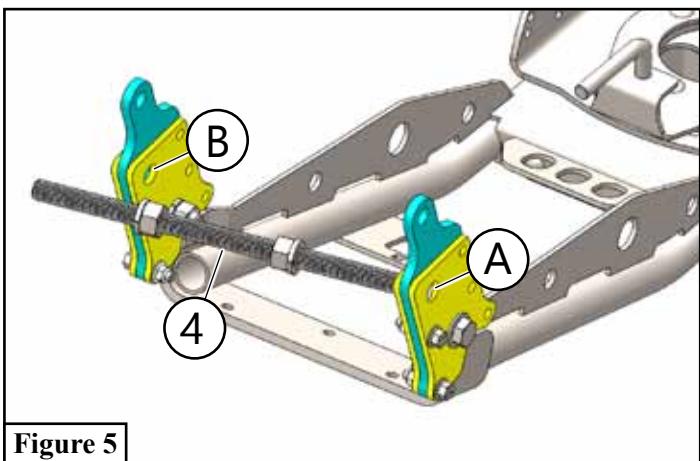
1. Set leveling tab (2) onto the ear of the push tube as shown in **Figure 3**.

2. Align the two tab supports (1) up to the leveling tab (2) and insert bolt (5.4), flat washer (5.1), lock washer (5.9), and nut (5.7) as shown in **Figure 1&4**. Then insert bolts (5.5) and nuts (5.11) as shown in **Figure 1&4**.

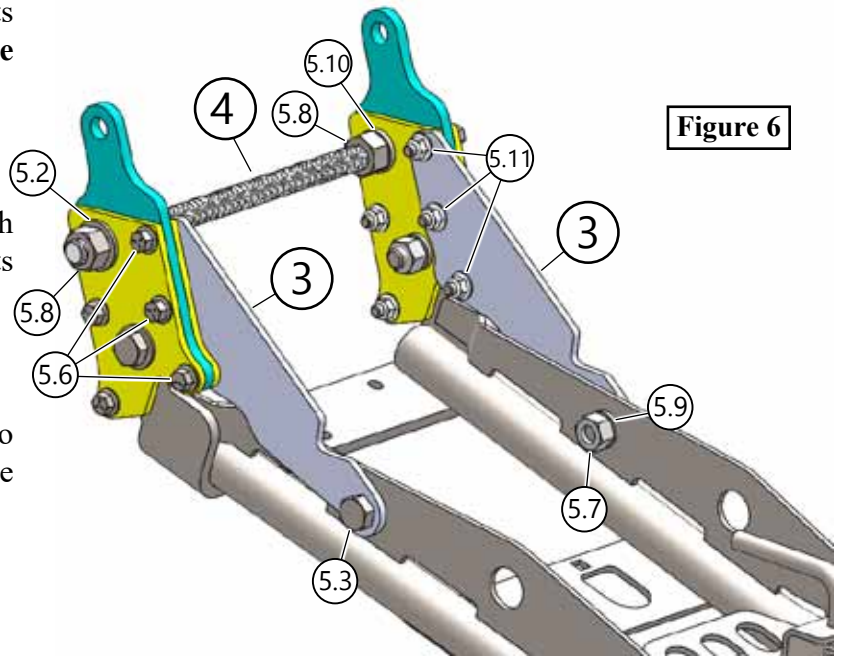
3. Assemble nuts (5.8) and lock washers (5.10) onto the threaded rod (4) as shown below.



4. Slide the right end of the threaded rod (4) into the hole (A) at an angle as shown in **Figure 5**. Take the other end of the rod and slide it into hole (B) and secure using nuts (5.8) and washers (5.2) as shown in **Figure 6**.



- Attach the leveling braces (3) to the tab supports using bolts (5.6) and nuts (5.11) as shown in **Figure 6**.



- Attach the front of the leveling brace (3) to the push tube gusset using bolts (5.3) washers (5.9) and nuts (5.7) as shown in **Figure 6**.

- Adjust the leveling tag distance to 11-5/8" inside to inside by tightening or loosening nuts (5.8) on the threaded rod (4) as shown in **Figure 7**.

- Tighten all hardware evenly.

