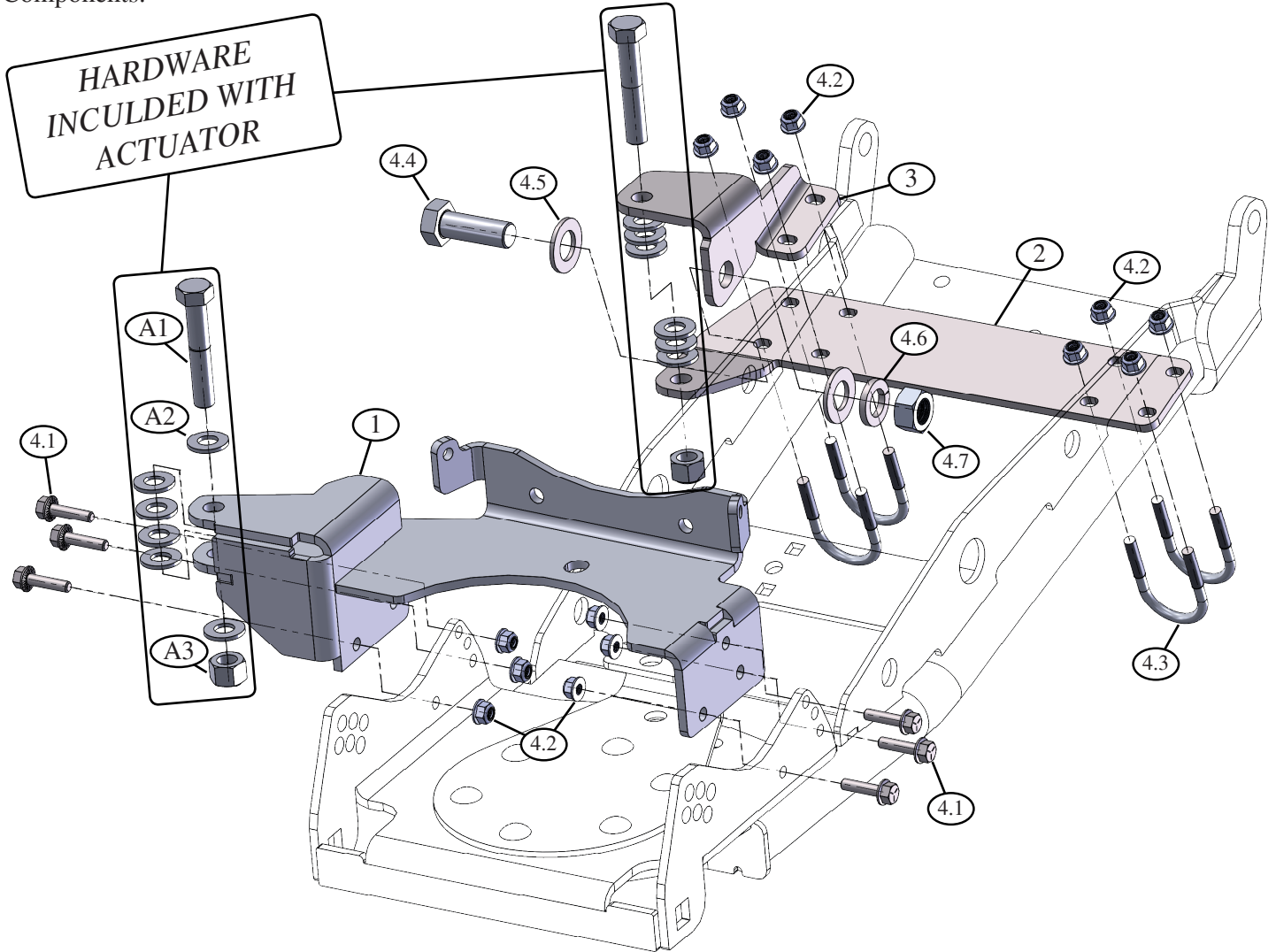


# HYDRAULIC PLOW ACTUATOR BRACKETS

## PLOW ACCESSORY

Mount: PART # 105895  
 Hardware Kit: HK-178

Kit Components:



Item #	Qty.	Part #	Description
1	1	106307	FRONT CRADLE BRKT
2	1	105803	REAR LOWER BRKT
3	1	105804	REAR UPPER BRKT
4	1	HK-178	HARDWARE KIT
4.1	6	HBF-5Z-031-18-125	5/16"-18 X 1-1/4" HEX BOLT FLANGE
4.2	14	HNFN-5Z-031-18	5/16"-18 HEX FLANGE NYLOCK NUT

Item #	Qty.	Part #	Description
4.3	4	P800275	5/16"-18 X 1-1/2" X 2-1/2" X 1-1/4" THREAD U-BOLT
4.4	1	HB-88Z-M18-250-045	M18 - 2.5 X 45MM HEX BOLT
4.5	2	FW-SAE-Z-075	3/4" SAE WASHER
4.6	1	LW-Z-075	3/4" LOCK WASHER
4.7	1	HN-Z-M18-250	M18 - 2.5 HEX NUT

### HARDWARE INCLUDED WITH ACTAUATOR

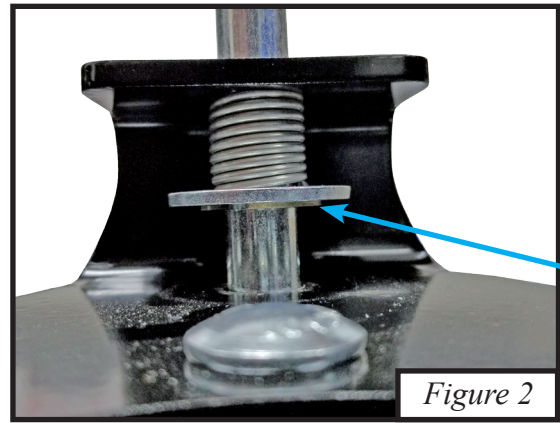
A1	2	HB-88Z-M14-200-080	M14 - 2.0 X 80MM HEX BOLT
A2	12	FW-Z-M14	M14 FLAT WASHER
A3	2	HNN-Z-M14-200	M14 - 2.0 HEX NYLOCK NUT



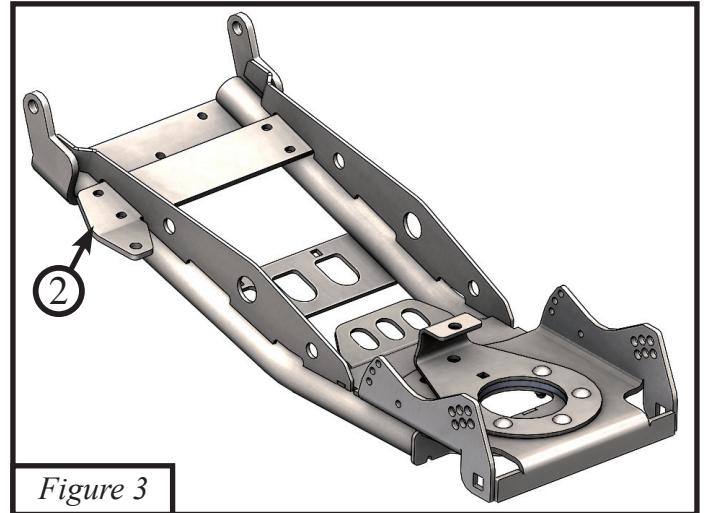
## INSTALLATION INSTRUCTIONS:

*Note: Make sure all of the hardware needed to complete this mount is in the package. Read through and understand the instructions before installing.*

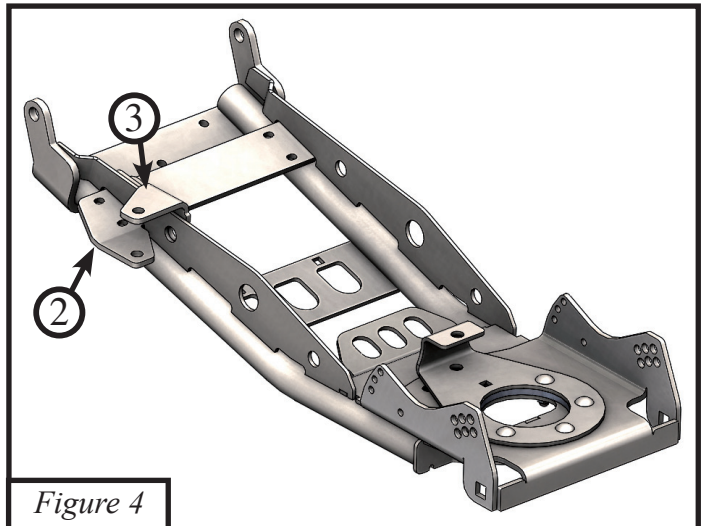
1. Remove handle for lift latch assembly. Lift the handle up compressing the spring. Remove the C-Clip under the washer. Remove the handle, spring and washer as shown in *Figure 2*.



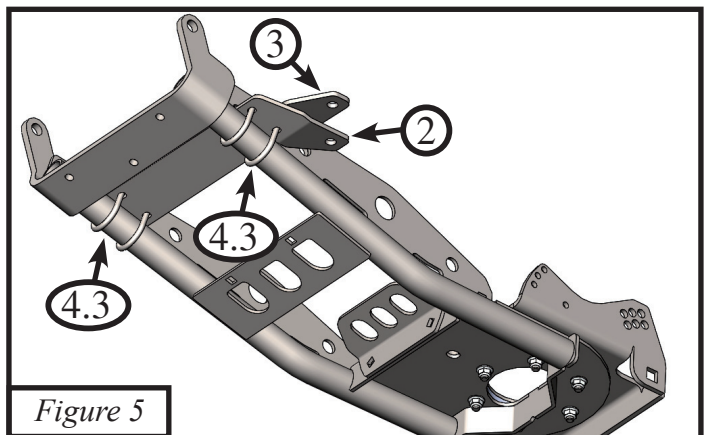
2. Slide the rear lower bracket (2) through the gaps of the push tube as shown in *Figure 3*.



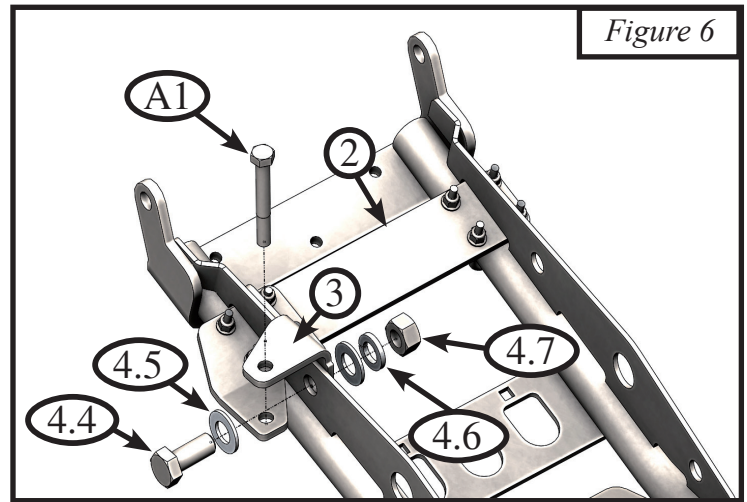
3. Set the rear upper bracket (3) on top of the lower bracket (2) on the passenger side of the tube. Line up the holes on the brackets and tube. Shown in *Figure 4*.



4. Insert the four U-bolts (4.3) through the rear brackets (2 & 3) shown in *Figure 5*. Loosely attach the 5/16" nuts (4.2) to the U-bolts.

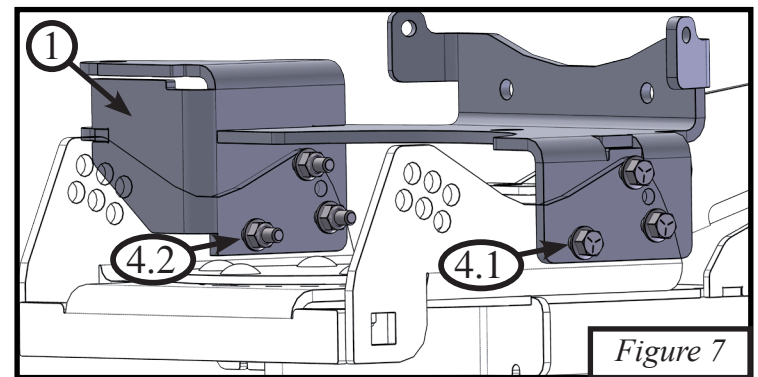


5. Place bolt (4.4) through flat washer (4.5) and Rear Lower Bracket. Slide washer (4.5), lock washer (4.6) onto bolt and tighten nut (4.7) as shown in *Figure 6*.

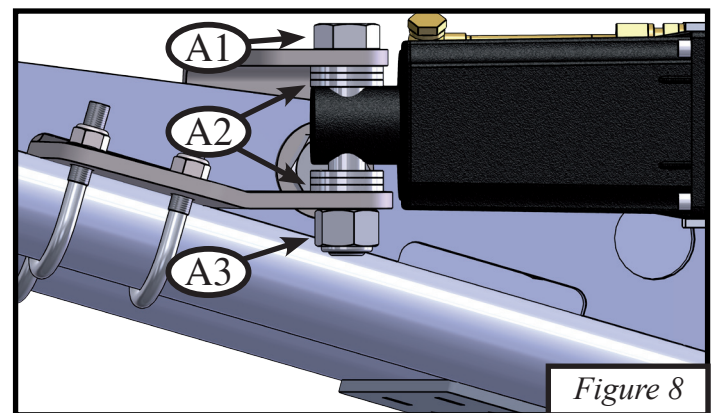


6. Loosely place bolt (A1) into position and align vertical/ perpendicular through the two holes. Tighten all U-bolt nuts down evenly as shown in *Figure 6*.

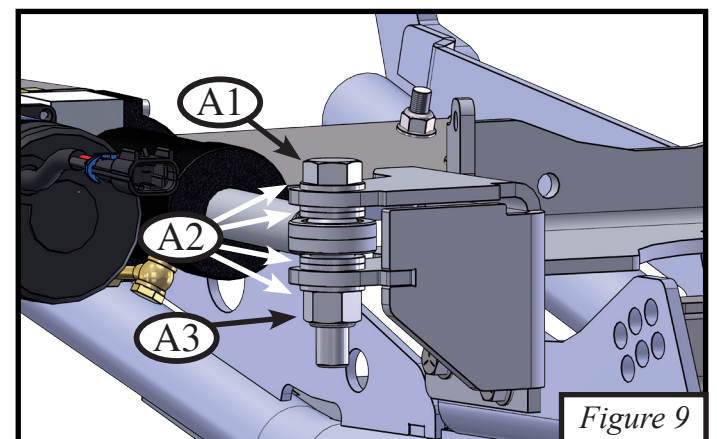
7. Line up front cradle bracket (1) with holes in rear of cradle. Place six bolts (4.1) and six nuts (4.2) through holes as shown in *Figure 7*. Tighten down all hardware evenly.



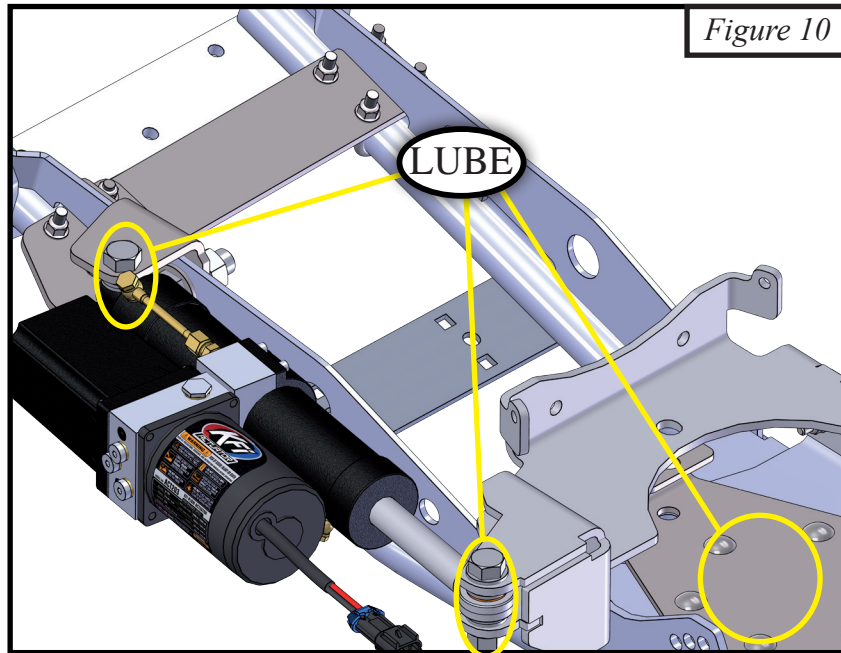
8. Place bolt (A1) through upper bracket (3), three flat washers (A2), Hydraulic Actuator (ACT203), three flat washers (A2), and lower bracket (2). Place nylock nut (A3) onto bolt (A1) as shown in *Figure 8*. Tighten bolt and nut. (DO NOT over tighten.) Allow actuator to freely rotate around the bolt.



9. Place bolt (A1) through flat washer (A2), top of front cradle bracket (1), two flat washers (A2), Hydraulic Actuator (ACT203), two flat washers (A2), and the bottom of front bracket (1). Slide washer (A2) onto the bolt and tighten nut (A3) as shown in *Figure 9*.



10. Periodically apply lubricant to the rear and front pivot points on the Hydraulic Actuator. Also on front pivot of the pushtube shown in *Figure 10*.



11. When all the brackets are installed you will have to move the spring mounting location. Move the spring to the bent flange with a hole on top of the front cradle bracket (1). Repeat with other spring. Shown in *Figure 11*.

