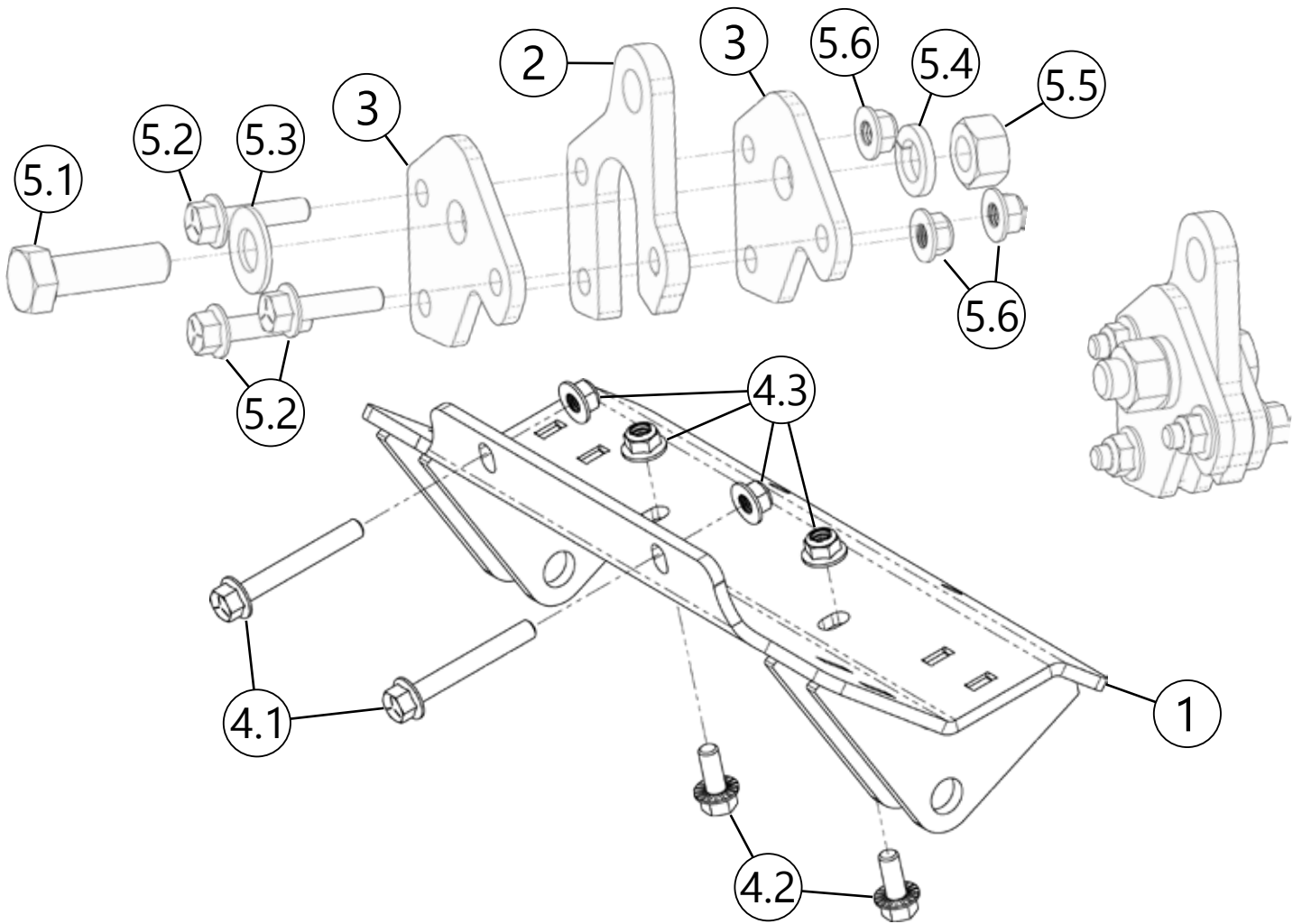


KAWASAKI TERYX KRX 1000

Plow Mount

PART #106095



Item #	Qty.	Description
1	1	Plow Mount
2	2	2" Lift Tab
3	4	2" Tab Support
4	1	HK-372
4.1	2	3/8"-16 x 2.75 Hex Flange Bolt
4.2	2	3/8"-16 x .88 Hex Flange Bolt
4.2	4	3/8"-16 x .88 Hex Flange Bolt (not used)
4.3	4	3/8"-16 Hex Flange Nylock Nut

Item #	Qty.	Description
5	1	HK-181
5.1	2	5/8"-11 x 2.00 Hex Bolt
5.2	6	3/8"-16 x 1.50 Hex Flange Bolt
5.3	2	5/8" Flat Washer
5.4	2	5/8" Lock Washer
5.5	2	5/8"-11 Hex Nut
5.6	6	3/8"-16 Hex Flange Nylock Nut



INSTALLATION INSTRUCTIONS

Note: Make sure all hardware needed to complete this mount is in the package. Thoroughly read through and understand the instructions before installing.

Note: This machine does require the included 2" leveling kit. See page 3 for installation instructions.

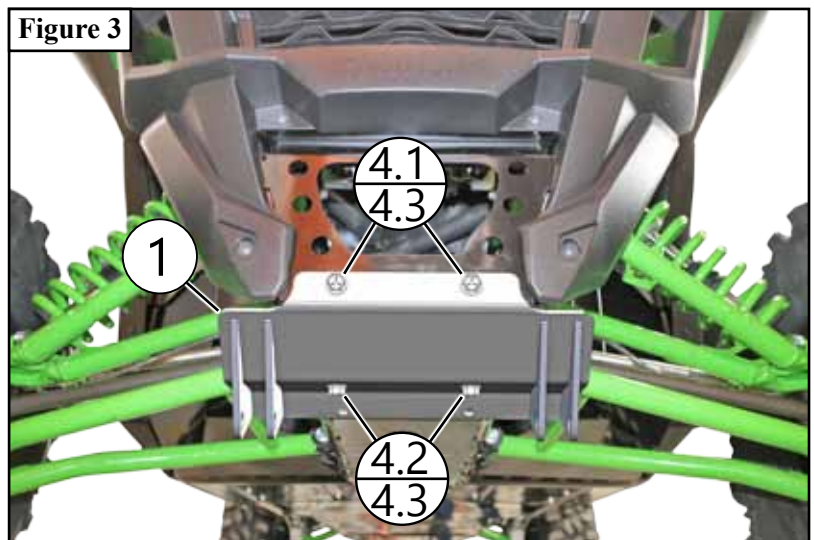
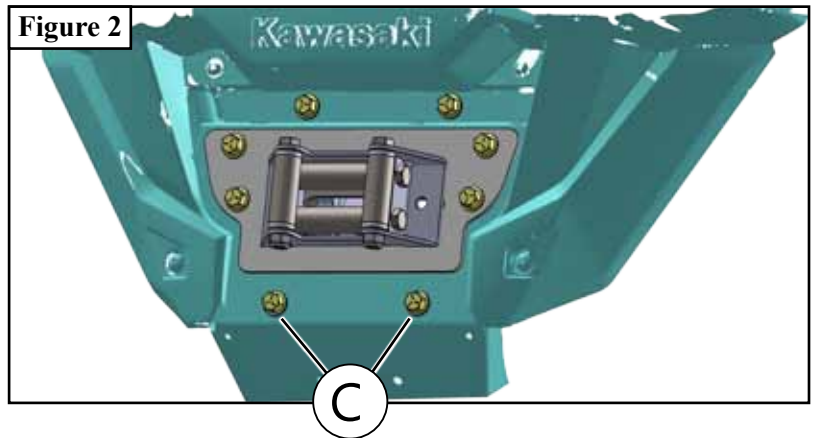
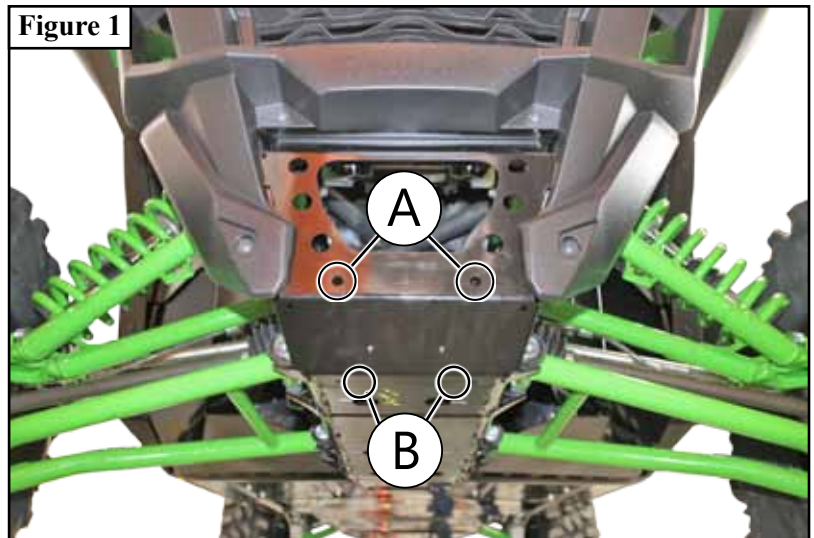
1. Hold plow mount (1) in place lining up holes in plow mount (1) to frame holes (A) as shown in **Figure 1 & 3**.

Note: If the winch mount is installed prior to the plow mount, removal of bolts (C) will be required before installing plow mount (1) as shown in **Figure 2**.

2. Loosely install front bolts (4.1) and nuts (4.3). While holding the plow mount (1) into place, mark holes (B) on the machine using the plow mount as a template. Drill the marked holes using a 13/32" drill bit. Loosely install bottom bolts (4.2) and nuts (4.3).

3. Secure plow mount (1) using bolts (4.1), nuts (4.3) on the front side and bolts (4.2), nuts (4.3) on the bottom side as shown in **Figure 3**.

4. Tighten all hardware evenly.



2" LEVELING KIT INSTALLATION

1. Set lift tab (2) onto the ear of the push tube as shown in **Figure 4**.

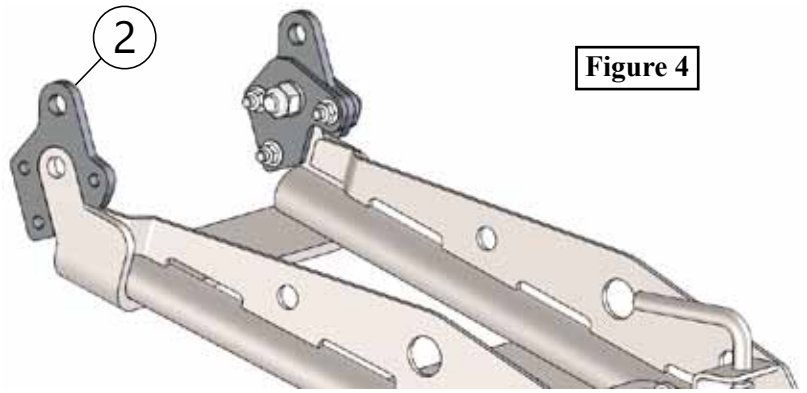


Figure 4

2. Align the two tab supports (3) up to the lift tab (2) and fasten bolt (5.1), flat washer (5.3), lock washer (5.4) and nut (5.5) as shown in **Figure 5**.

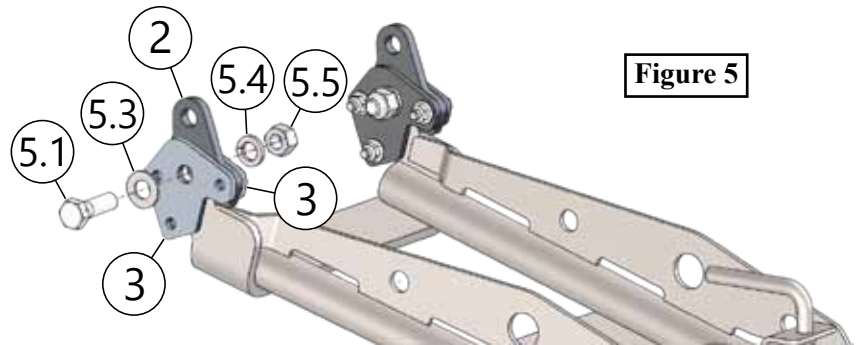


Figure 5

3. Fasten bolts (5.2) and nuts (5.6).

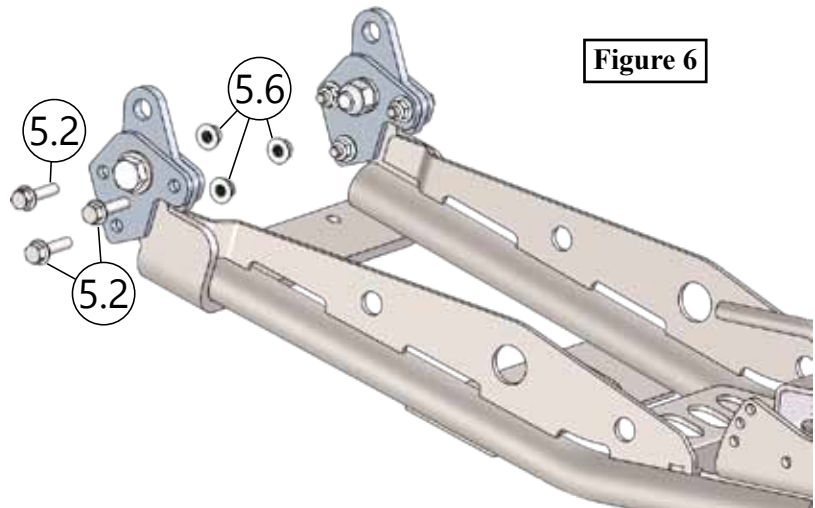


Figure 6

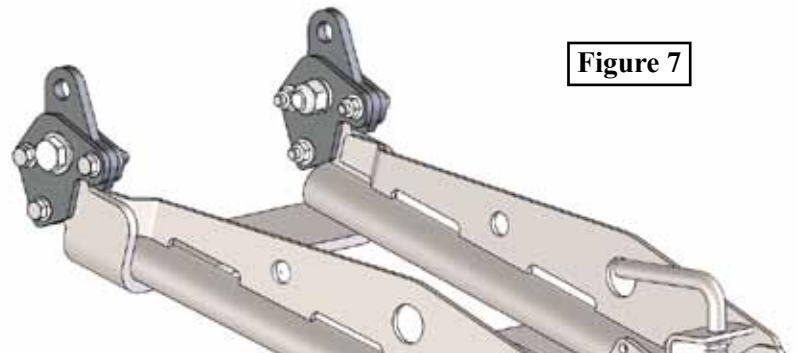


Figure 7