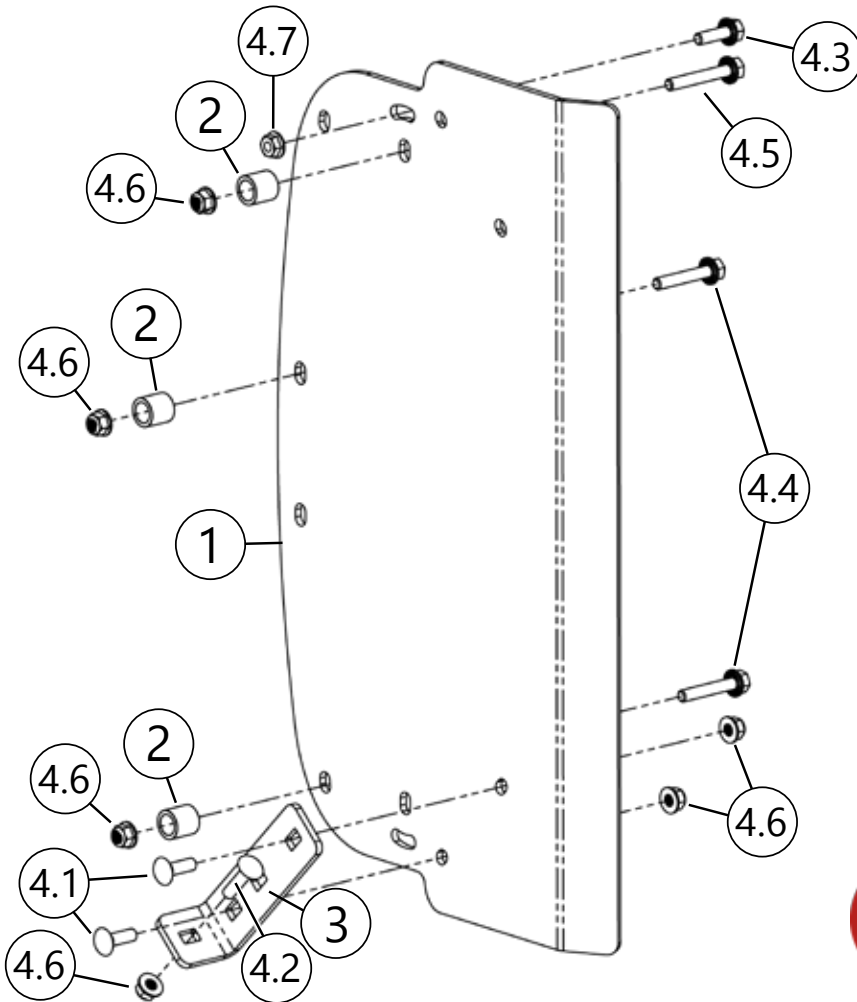


# POLY PLOW BOX END

Plow Accessory

PART #106120 Rev C

Kit Components:		
Item #	Qty.	Description
1	1	Poly Plow Box End
2	3	Bushing
3	1	Box End Bracket
4	1	HK-364
4.1	2	5/16"-18 x 1.00" Carriage Bolt
4.2	1	5/16"-18 x 1.25" Carriage Bolt
4.3	3	5/16"-18 x 1.00" Hex Flange Bolt
4.4	2	5/16"-18 x 1.75" Hex Flange Bolt
4.5	1	5/16"-18 x 2.00" Hex Flange Bolt
4.6	6	5/16"-18 Hex Flange Nylock Nut
4.7	2	5/16"-18 Hex Flange Nut Serrated



## INSTALLATION INSTRUCTIONS:

**Note:** Make sure all hardware needed to complete this mount is in the package. Thoroughly read through and understand the instructions before installing.

**Note:** All steps in this manual are showing installation on the driver side of the blade. The Box End is a symmetrical part and can be installed on either side. Installation for the passenger side is mirrored.

1. Remove and discard the outermost wear bar carriage bolt on the driver side of the blade.
2. If already installed, remove the plow marker from the blade and set aside as it will be installed in a later step. Discard the plow marker hardware as new hardware will be used from the Box End kit.
3. Loosely install Box End Bracket (3) to Box End (1) using Bolts (4.1) and Nuts (4.6) as shown in **Figure 1**.
4. Hold Box End in place and secure using the two shaded Bolts (4.4), Spacers (2), and nuts (4.6) as shown in **Figure 2**. **Note:** All spacers will get used between the box wing and the plow blade gusset.
5. Once Box End (1) is loosely installed, hold the plow marker in place and secure using bolts (4.5 & 4.6), Spacer (2), and Nuts (4.6 & 4.7) as shown in **Figure 2**.
6. Secure Box End Bracket (3) to the wear bar using Bolt (4.2) and Nut (4.6) as shown in **Figure 3**.
7. Tighten all hardware evenly.

