

TEIR 2 PLOW MOUNT

PART #106245

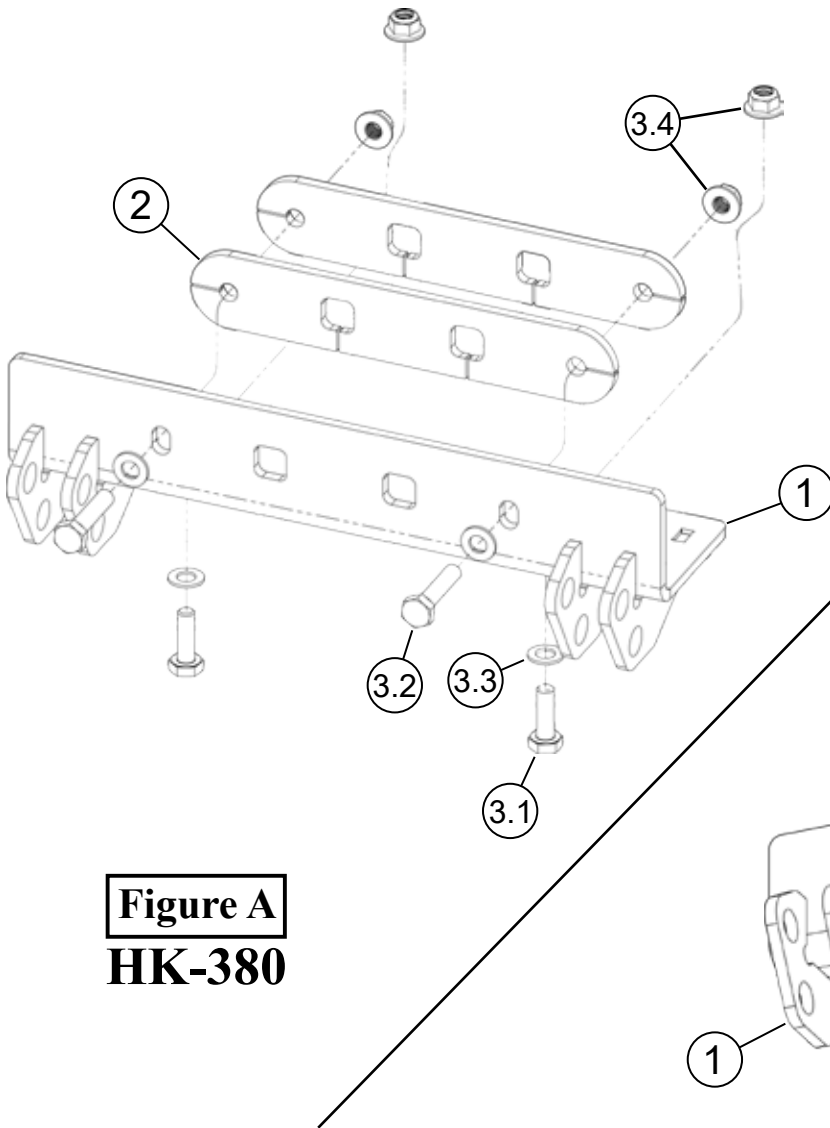


Figure A
HK-380

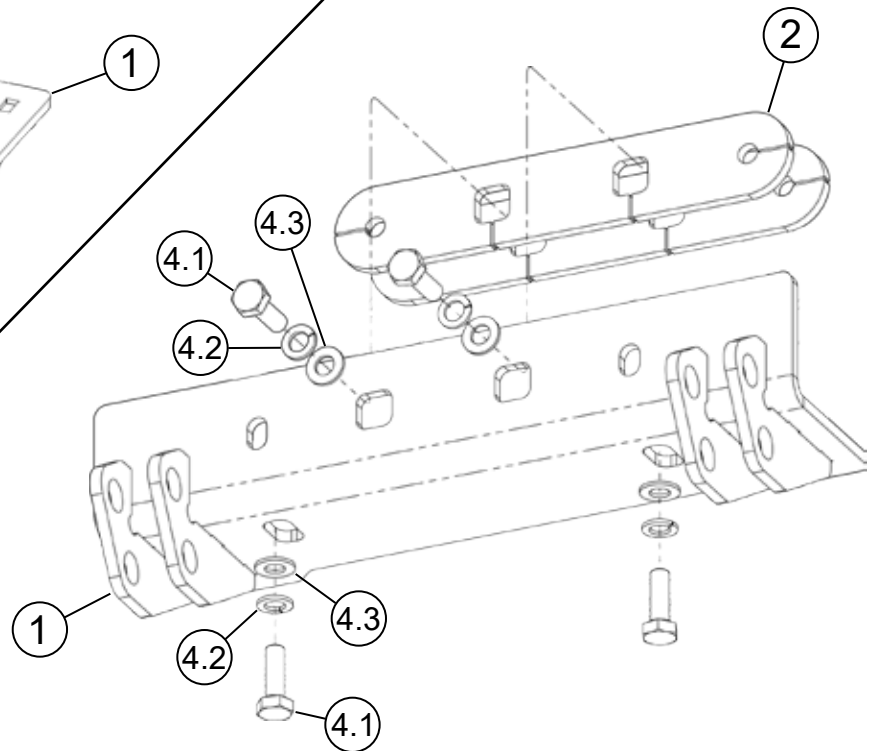


Figure B
HK-195

Item #	Qty.	Description
1	1	Plow Mount
2	2	Plow Mount Spacer
3	1	Hardware Kit (HK-380)
3.1	2	M10-1.25 X 45 HEX BOLT
3.2	2	M10-1.25 X 30 HEX BOLT

Item #	Qty.	Description
3.3	4	M10 Flat Washer
3.4	4	M10-1.25 Hex Flange Nylock Nut
4	1	Hardware Kit (HK-159)
4.1	4	M10-1.25 X 30 HEX BOLT
4.2	4	M10 Lock Washer
4.3	4	M10 Flat Washer



INSTALLATION INSTRUCTIONS

Note: Make sure all hardware needed to complete this mount is in the package. Thoroughly read through and understand the instructions before installing.

1. Set plow mount (1) in location (A) with the plow mount spacers (2) between the plow mount and the frame of the machine as shown in **Figure 1 & 2**. **NOTE:** Location (A) is used only as a reference in this manual. Some machines may require location (B). At location (B), the plow mount will go between the front bumper and frame. See **Figure 3**. The Plow mount spacers (2) may not be required on all machines.

Note: Some machines may or may not come with threaded holes (A or B) as shown in **Figure 1 & 2**.

Note: In the case that the machine does not have pre drilled holes (A or B) shown in **Figure 1 & 2**, hold plow mount (1) in place and secure using bottom bolts (3.1) and nuts (3.4). Using plow mount (1) as a template, drill front holes (A or B) using a 7/16" drill bit and proceed to step 2.

2. Fasten the plow mount to the frame of the machine using correct supplied hardware as shown on page 1 of this manual. Machines that do not have weld nuts in the frame will use the M10 nylock nuts (3.4) on the inside of the frame shown in **Figure 1**. **NOTE:** Location (A) used as a reference shown in **Figure 4**.

3. Tighten all hardware evenly.

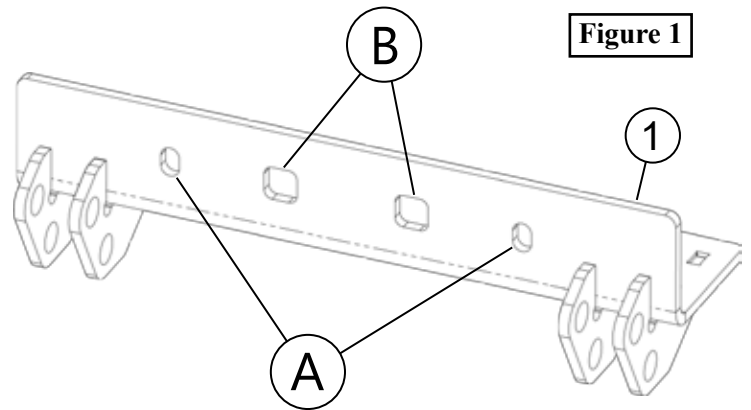
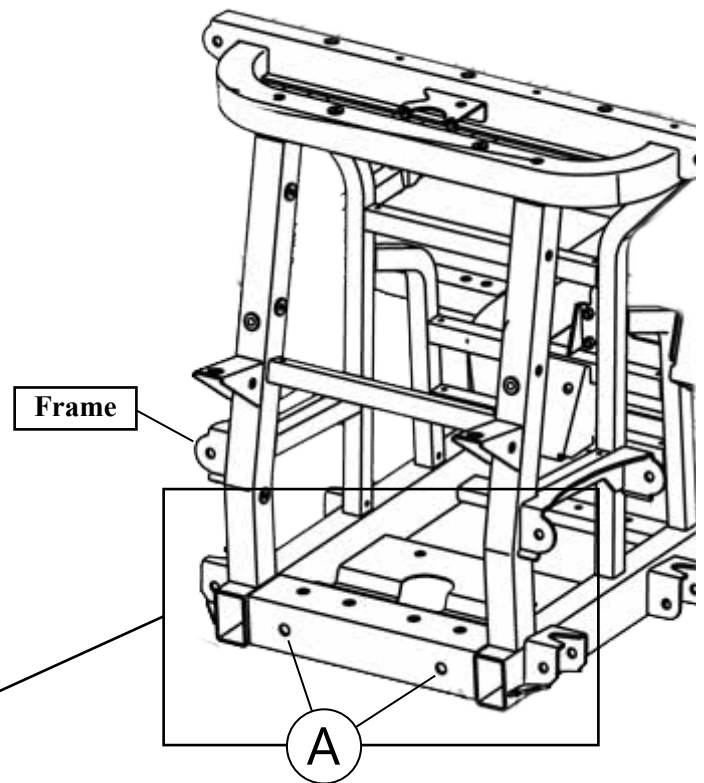


Figure 1



Frame

A

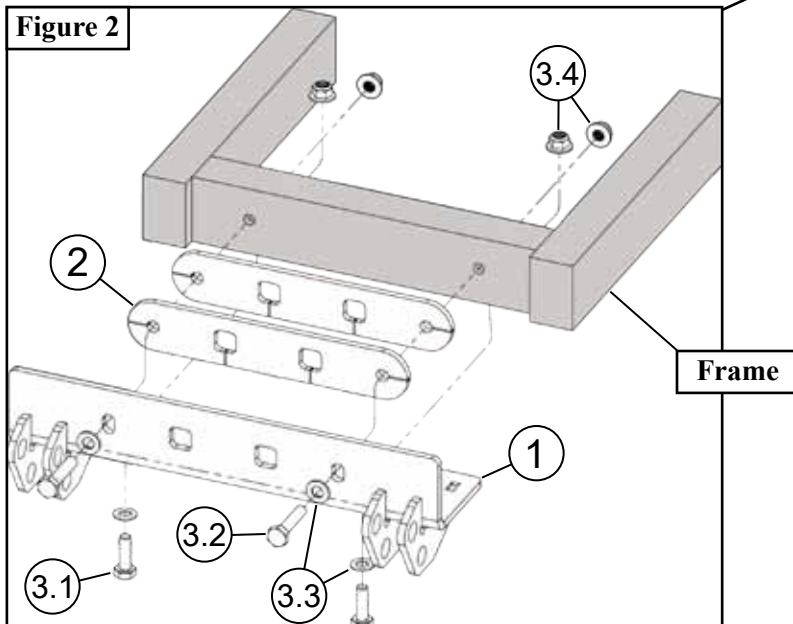


Figure 2

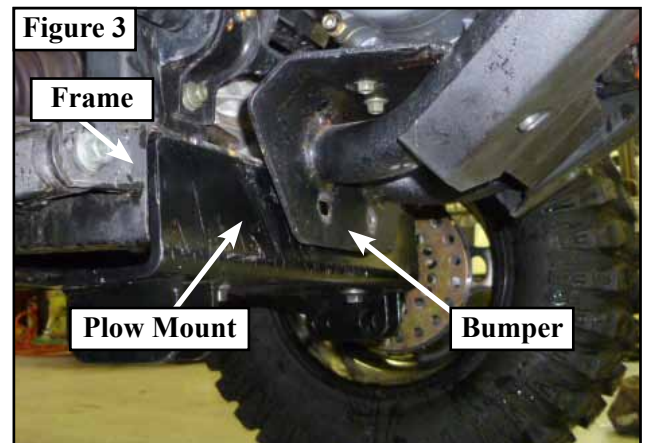


Figure 3

Frame

Plow Mount

Bumper