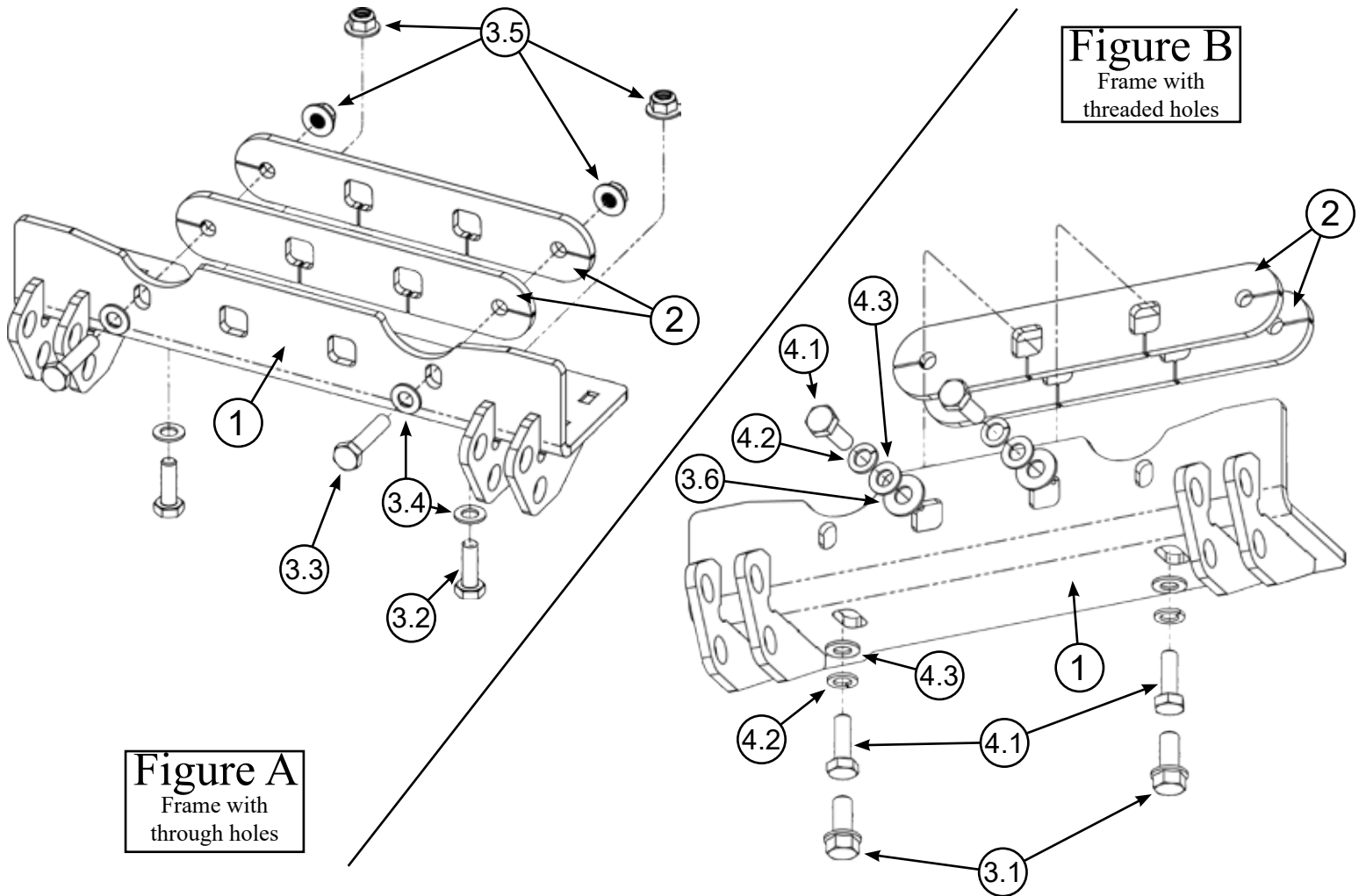


# TIER 2 PLOW MOUNT

Plow Mount PART #106420



**Figure A**  
Frame with  
through holes

**Figure B**  
Frame with  
threaded holes

## Kit Components:

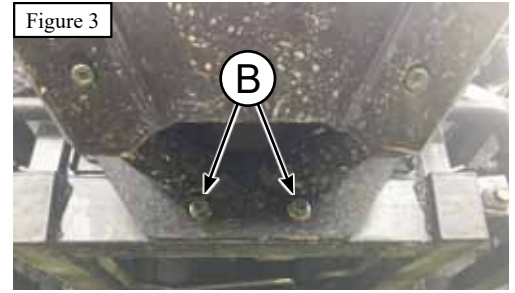
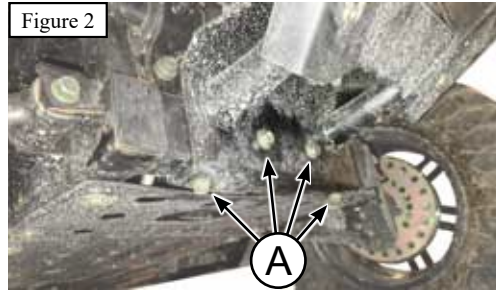
Item #	Qty.	Description
1	1	Plow Mount
2	2	Plow Mount Spacer
3	1	Hardware Kit (HK-380)
3.1	2	M12-1.25 X 25 Hex Bolt Flange GR10.9
3.2	2	M10-1.25 X 30 Hex Bolt GR8.8
3.3	2	M10-1.25 X 45 Hex Bolt GR8.8

Item #	Qty.	Description
3.4	4	M10 Flat Washer
3.5	4	M10 Hex Nut Flange Nylock
3.6	2	3/8" USS Flat Washer
4	1	Hardware Kit (HK-159)
4.1	4	M10-1.25 X 30 Hex Bolt GR8.8
4.2	4	M10 Lock Washer
4.3	4	M10 Flat Washer



# INSTALLATION INSTRUCTIONS

**Note:** Make sure all hardware needed to complete this mount is in the package. Thoroughly read through and understand the instructions before installing.



**Note:** This mount can be fitted in multiple orientations depending on how the bumper mounts to the frame.

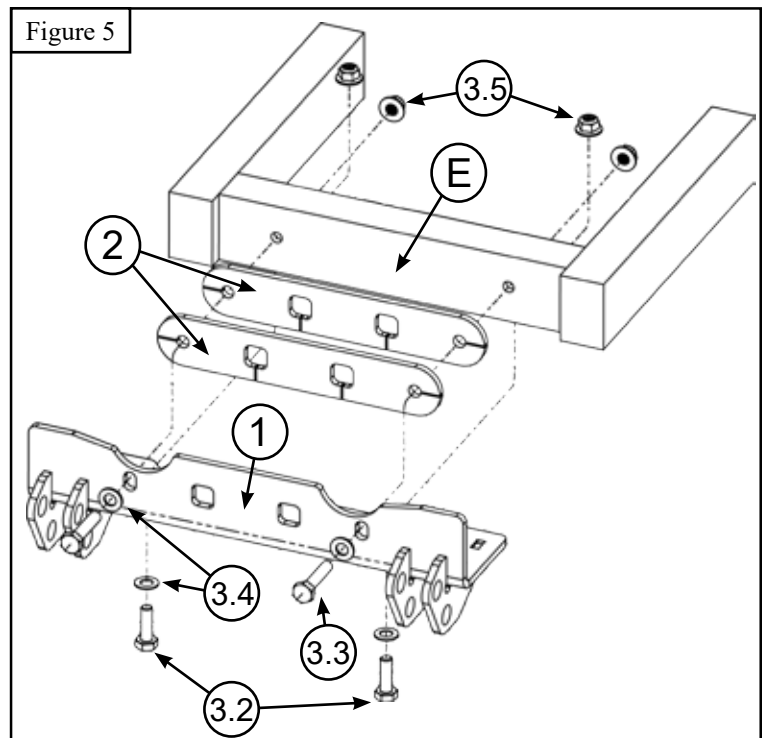
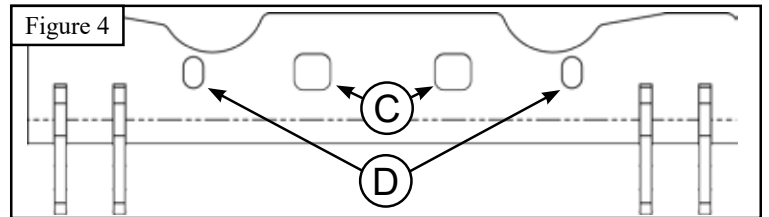
- If the bumper is attached on the top of the frame only, the mount can bolt directly to the frame (**Figure 1**).
- If the bumper is attached to the front and bottom of the frame. The mount will attach on the outside of the bumper (**Figure 2**).
- If the bumper is attached to the front of the frame only, the mount will go between the frame and bumper (**Figure 3**).

**Note:** Some machines may come with threaded holes. Machines that are threaded in the frame will use lock washers (4.2) on the M10 bolts. If your holes are not threaded, omit the lock washers on the M10 bolts and use lock nuts (3.5) on the backside of the frame. Use the exploded drawing on the front page to help decide how your mount will attach once you know if the frame holes are threaded.

**Note:** Either hole (C or D) can be used when attaching the mount to the frame as shown in **Figure 4**. If there are not pre-existing holes, use the bottom bolts to secure the mount in place and use the mount as a template, drilling the holes using a 7/16" drill bit.

## Instructions for bumper mounted on the top of the frame (**Figure 1**).

1. Remove the skid plate on the front of the machine (if present).
2. Use plow mount (1) and plow mount spacers (2), if needed, in location (E) as shown in **Figure 5**.
3. Use the exploded drawing on the cover of this manual to decide which hardware is needed on your specific machine, depending if your bolt locations are threaded or not.
4. Once all hardware is in place as shown in **Figure 6**, tighten completely.



# INSTALLATION INSTRUCTIONS

Instructions for bumper mounted on the front and bottom side of the frame (**Figure 2**).

1. Remove the 4 bolts that attach the bumper to the frame (**Figure 2, Bolts A**).
2. Fasten the plow mount to the outside of the bumper and frame of the machine using correct supplied hardware as shown on the front page of this manual.
3. Once all hardware is started, tighten all hardware evenly

Instructions for bumper mounted on the front of the frame (**Figure 3**).

1. Remove the 2 bolts holding the bumper to the frame (**Figure 3, Bolts B**) and swing the bumper out away from the frame.
2. Place spacers (2), if needed, and mount (1) in location E as shown in **Figure 5**. Let bumper rest in front of the plow mount and, using the correct supplied hardware, get all bolts started as shown in **Figure 8**.
3. Once all hardware is started, tighten all hardware evenly

