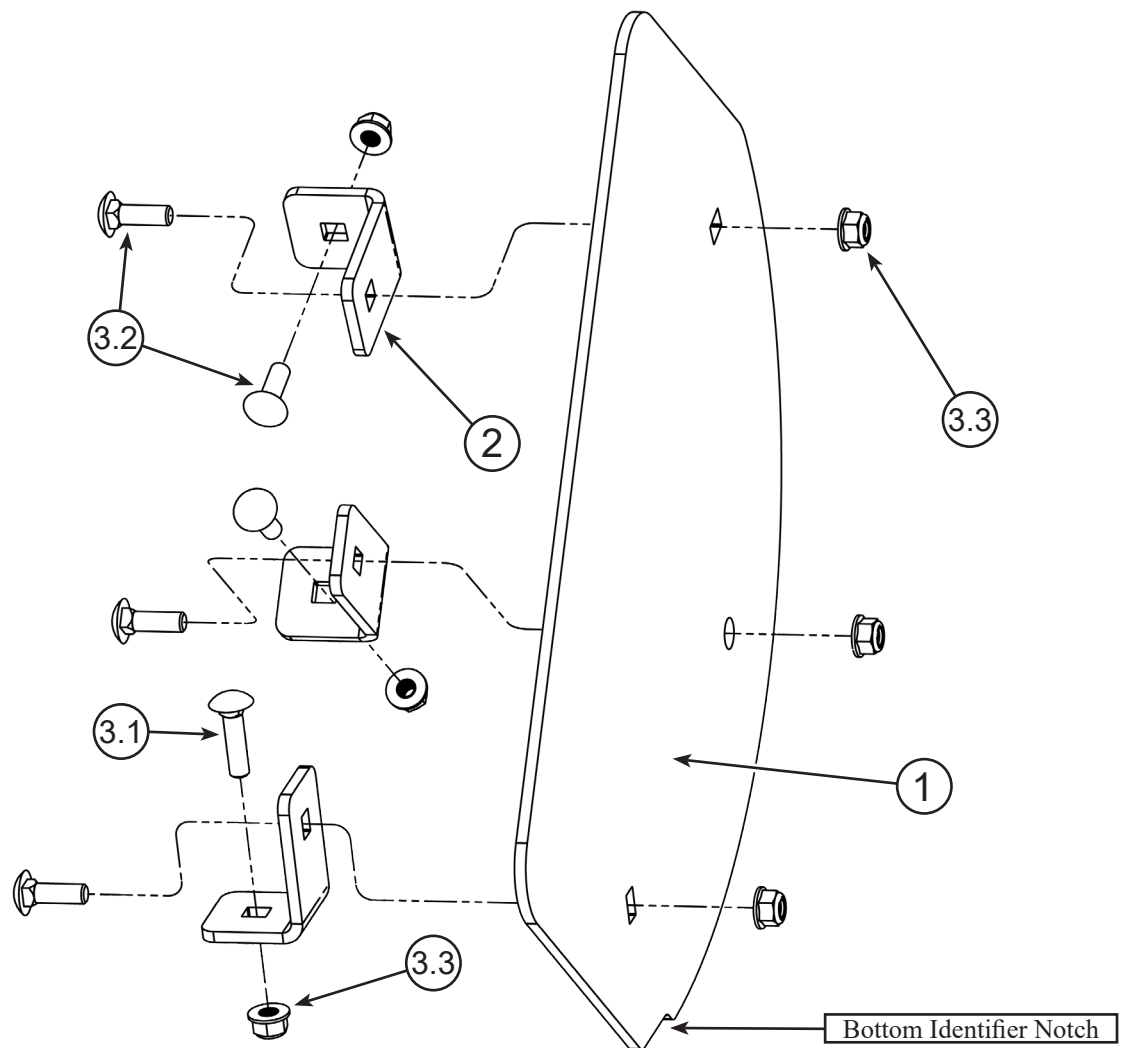


# PRO-S SIDE SHIELD - BOX END

Plow Accessory PART #106475

Kit Components:		
Item #	Qty.	Description
1	1	Side Shield Plate
2	3	Side Shield Bracket
3	1	Hardware Kit HK-421
3.1	1	5/16"-18 x 1.25" Carriage Bolt GR8
3.2	5	5/16"-18 x 1.00" Carriage Bolt GR5
3.3	6	5/16"-18 Hex Nut Flange Nylock GR5



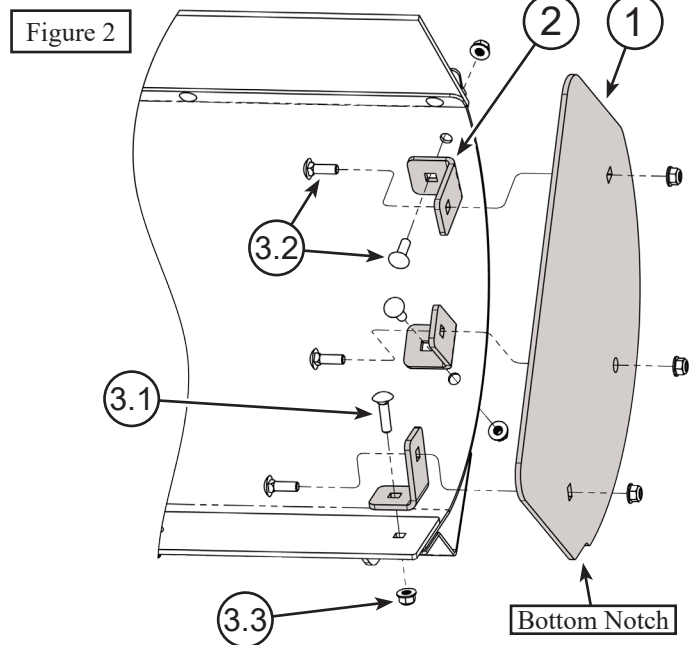
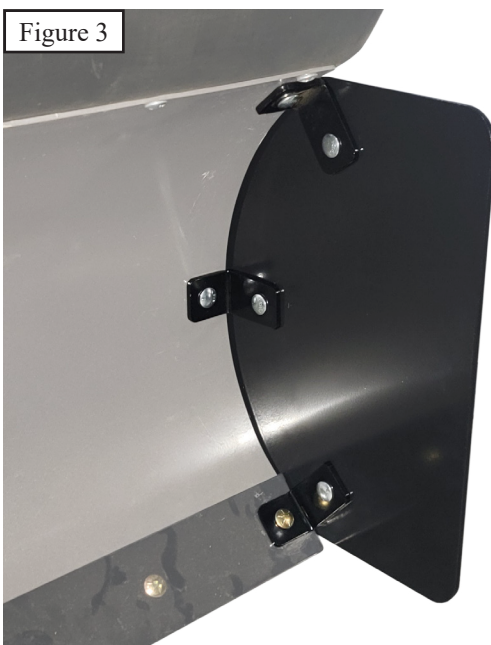
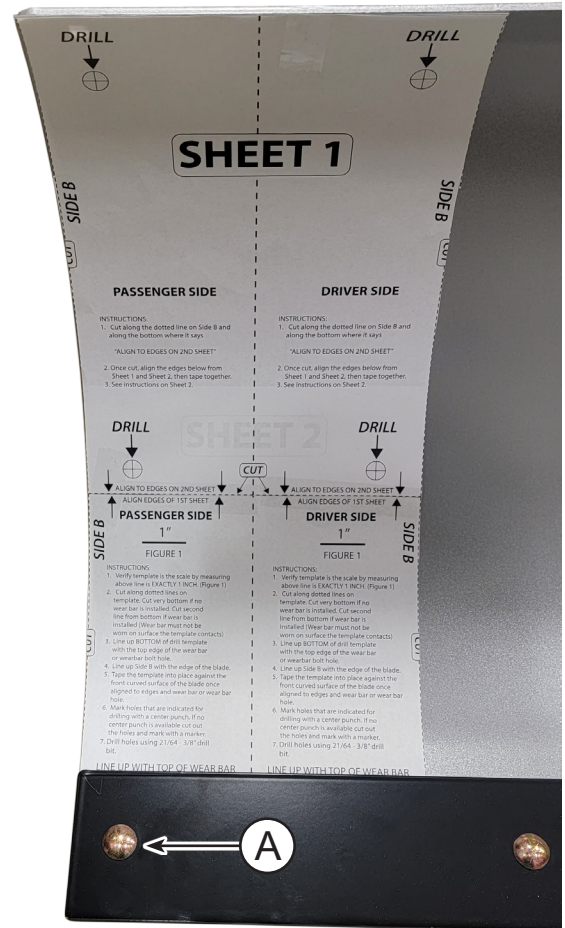
# INSTALLATION INSTRUCTIONS

**Note:** Make sure all hardware needed to complete this mount is in the package. Thoroughly read through and understand the instructions before installing.

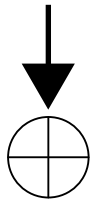
Figure 1

## Side Shield Installation

1. Locate the template in the back of this manual. Follow the instructions on the template until the holes for the Side Shield(s) are drilled.
2. Remove the outermost bolt (A) attaching the wear bar to the plow blade, as shown in Figure 1.
3. Loosely attach the three brackets (2) to the plow blade, placing the shorter side of the brackets against the blade, using bolts (3.2) and locknuts (3.3) on the upper brackets. The lowest bracket will attach through the last hole of the wear bar, using bolt (3.1) and locknut (3.3) on the back. Use the exploded diagram and Figure 2 for the orientation of the components.
4. Once all brackets are loosely installed on the blade, Place the Box End (1) against the side of the blade, ensuring all components are oriented as shown in Figure 2. Secure the Box End with remaining bolts (3.2) and Lock Nuts (3.3)
5. Once all hardware is installed, tighten all hardware evenly.



**DRILL**



**DRILL**



# SHEET 1

**SIDE B**

**SIDE B**

**CUT**

**CUT**

## PASSENGER SIDE

## DRIVER SIDE

**INSTRUCTIONS:**

- 1. Cut along the dotted line on Side B and along the bottom where it says

“ALIGN TO EDGES ON 2ND SHEET”

- 2. Once cut, align the edges below from Sheet 1 and Sheet 2, then tape together.
- 3. See instructions on Sheet 2.

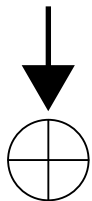
**INSTRUCTIONS:**

- 1. Cut along the dotted line on Side B and along the bottom where it says

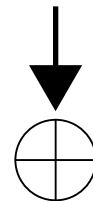
“ALIGN TO EDGES ON 2ND SHEET”

- 2. Once cut, align the edges below from Sheet 1 and Sheet 2, then tape together.
- 3. See instructions on Sheet 2.

**DRILL**



**DRILL**



**CUT**



ALIGN TO EDGES ON 2ND SHEET



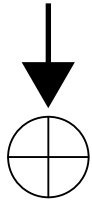
ALIGN TO EDGES ON 2ND SHEET





# SHEET 2

**DRILL**



**DRILL**



ALIGN EDGES OF 1ST SHEET

**PASSENGER SIDE**

1"

FIGURE 1

ALIGN EDGES OF 1ST SHEET

**DRIVER SIDE**

1"

FIGURE 1

**SIDE B**

**SIDE B**

**CUT**

**CUT**

**INSTRUCTIONS:**

1. Verify template is the scale by measuring above line is EXACTLY 1 INCH. (Figure 1)
2. Cut along dotted lines on template. Cut very bottom if no wear bar is installed. Cut second line from bottom if wear bar is installed (Wear bar must not be worn on surface the template contacts)
3. Line up **BOTTOM** of drill template with the top edge of the wear bar or wearbar bolt hole.
4. Line up Side B with the edge of the blade.
5. Tape the template into place against the front curved surface of the blade once aligned to edges and wear bar or wear bar hole.
6. Mark holes that are indicated for drilling with a center punch. If no center punch is available cut out the holes and mark with a marker.
7. Drill holes using 21/64 - 3/8" drill bit.

**INSTRUCTIONS:**

1. Verify template is the scale by measuring above line is EXACTLY 1 INCH. (Figure 1)
2. Cut along dotted lines on template. Cut very bottom if no wear bar is installed. Cut second line from bottom if wear bar is installed (Wear bar must not be worn on surface the template contacts)
3. Line up **BOTTOM** of drill template with the top edge of the wear bar or wearbar bolt hole.
4. Line up Side B with the edge of the blade.
5. Tape the template into place against the front curved surface of the blade once aligned to edges and wear bar or wear bar hole.
6. Mark holes that are indicated for drilling with a center punch. If no center punch is available cut out the holes and mark with a marker.
7. Drill holes using 21/64 - 3/8" drill bit.

LINE UP WITH TOP OF WEAR BAR

LINE UP WITH TOP OF WEAR BAR

LINE UP WITH  
OUTSIDE  
WEAR BAR HOLE  
IF WEAR BAR IS  
**\*NOT INSTALLED\***



LINE UP WITH  
OUTSIDE  
WEAR BAR HOLE  
IF WEAR BAR IS  
**\*NOT INSTALLED\***

