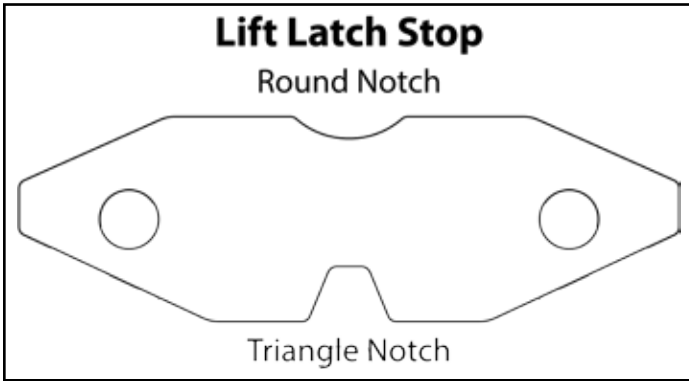
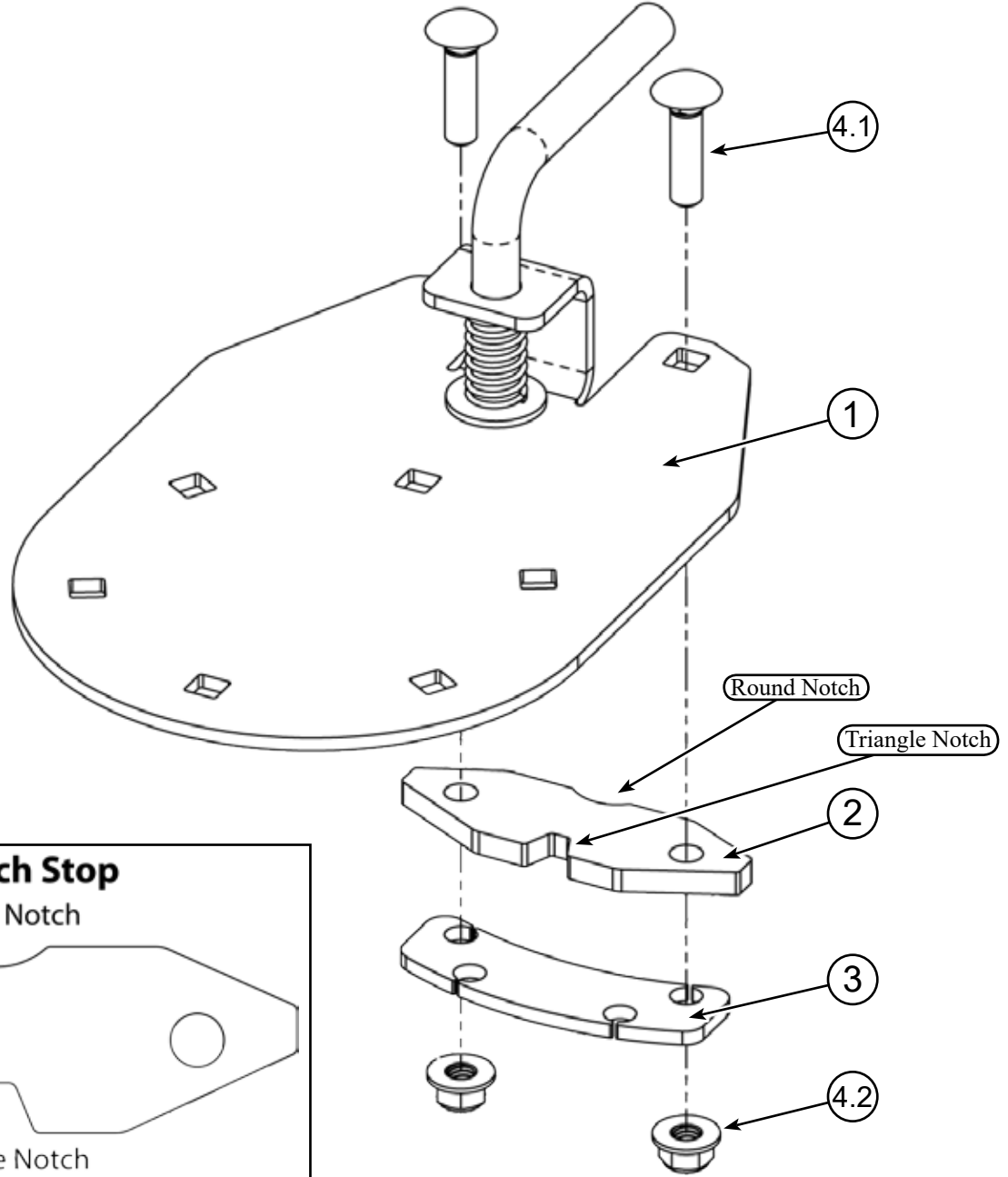


# UTV HD LIFT LATCH KEEPER KIT

Plow Accessory PART #106520



## Kit Components:

Item #	Qty.	Description	Item #	Qty.	Description
1	1	HD Lift Lock Latch	4	1	Hardware Kit HK-176-2
2	1	Lift Latch Stop	4.1	2	3/8"-16 x 1.5" Carriage Bolt GR5
3	1	Track Extension Spacer (Only For Track Extension)	4.2	2	3/8"-16 Hex Nut Flange Nylock GR5



# INSTALLATION INSTRUCTIONS

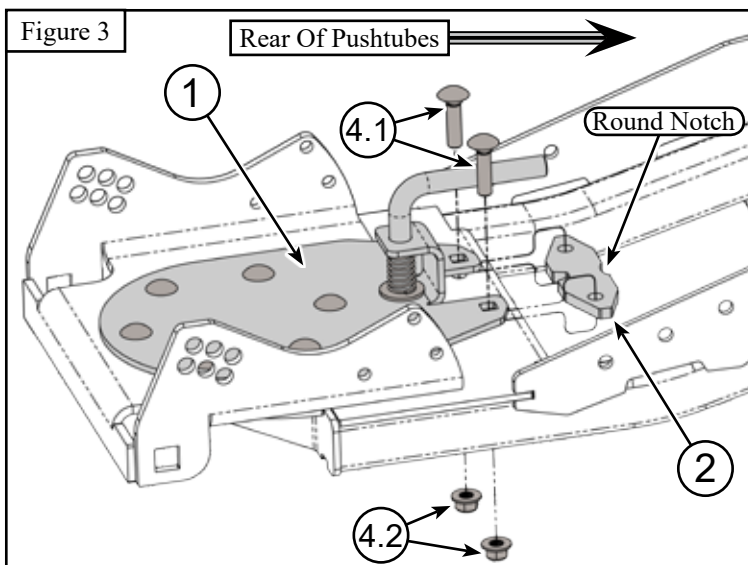
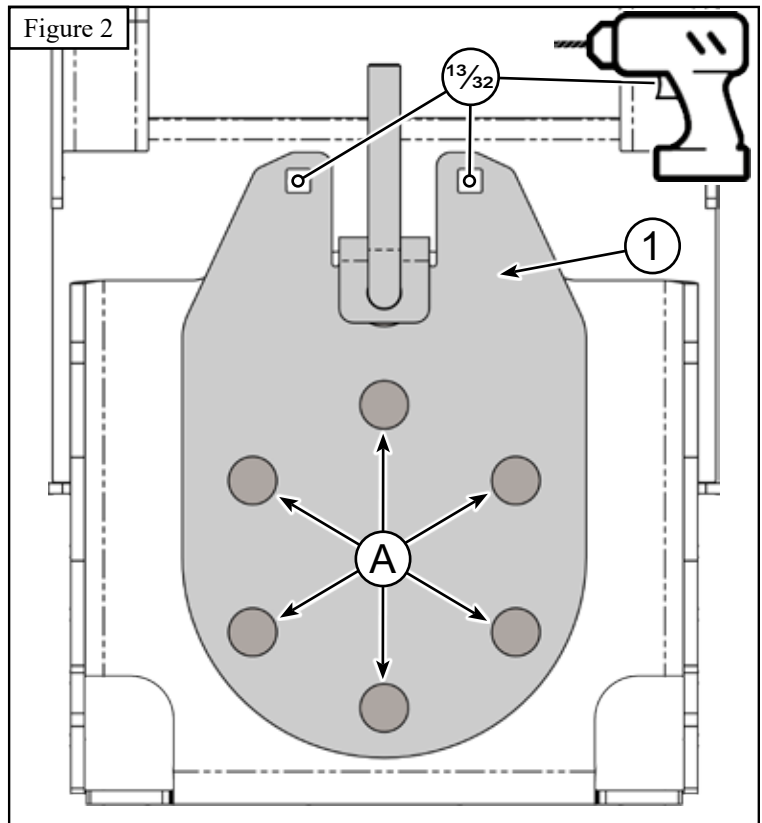
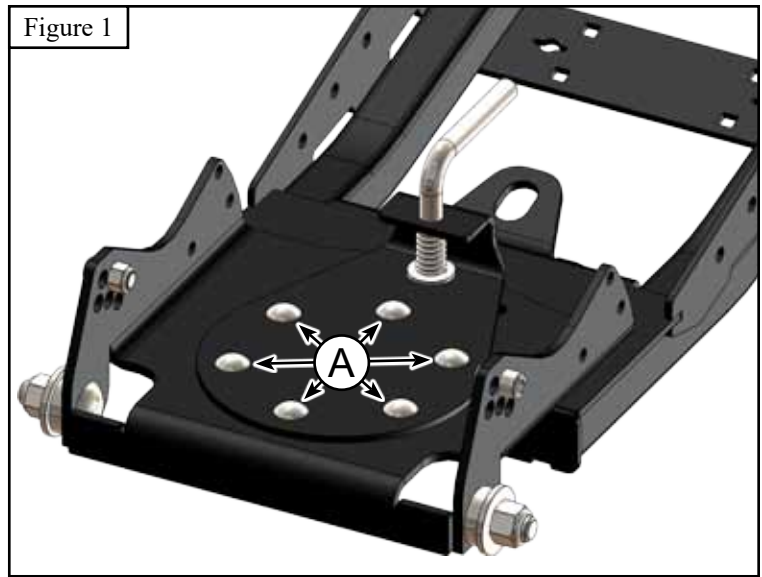
**Note:** Make sure all hardware needed to complete this mount is in the package. Thoroughly read through and understand the instructions before installing.

## Installation Without Track Extension

1. Remove the 6 carriage bolts (A), then remove the original Lift Lock Latch as shown in **Figure 1**.
2. Place the HD Lift Lock Latch (1) over the pivot bushing and secure with the original 6 Bolts (A) as shown in **Figure 2**.
3. If the rear holes are not present in the bulkhead, tighten bolts (A), and use the rear holes of the lift lock latch (1) as a template. Drill using a 13/32" bit. See **Figure 2**.

**\*Note:** Make sure you keep your drill straight.

4. Once your rear holes are drilled, loosen the 6 bolts (A) to install the Lift Latch Stop (2) between the Lift Lock Latch (1) and pushtube bulkhead. The round notch in the Lift Latch Stop (2) should be oriented towards the rear of the pushtubes (front of the machine). See **Figures 2 & 3**.
5. With the Lift Latch Stop (2) in place, install hardware (4.1 and 4.2) as shown in **Figure 3**.
6. Tighten all hardware (A, 4.1, & 4.2) evenly.



# INSTALLATION INSTRUCTIONS

## Installation With Track Extension

- Remove the 6 carriage bolts (A), then remove the original Lift Lock Latch as shown in **Figure 4**.
- Place the HD Lift Lock Latch (1) over the pivot bushing and secure with the original 6 Bolts (A) as shown in **Figure 5**.
- If the rear holes are not present in the track extension, tighten bolts (A), and use the rear holes of the lift lock latch (1) as a template. Drill using a 13/32" bit. See **Figure 5**.

**\*Note:** Make sure you keep your drill straight.

- Once your rear holes are drilled, loosen the 6 bolts (A) to install the Lift Latch Stop (2) between the Lift Lock Latch (1) and track extension. The round notch in the Lift Latch Stop (2) should be oriented towards the rear of the pushtubes (front of the machine). See **Figures 5 & 6**.
- Install the Track Extension Spacer (3) under the track extension. This component should follow the contour of the pushtube bulkhead as shown in **Figure 6**.
- Secure components from steps 10 & 11 with hardware (4.1 and 4.2) as shown in **Figure 6**.
- Tighten all hardware (A, 4.1, & 4.2) evenly.

