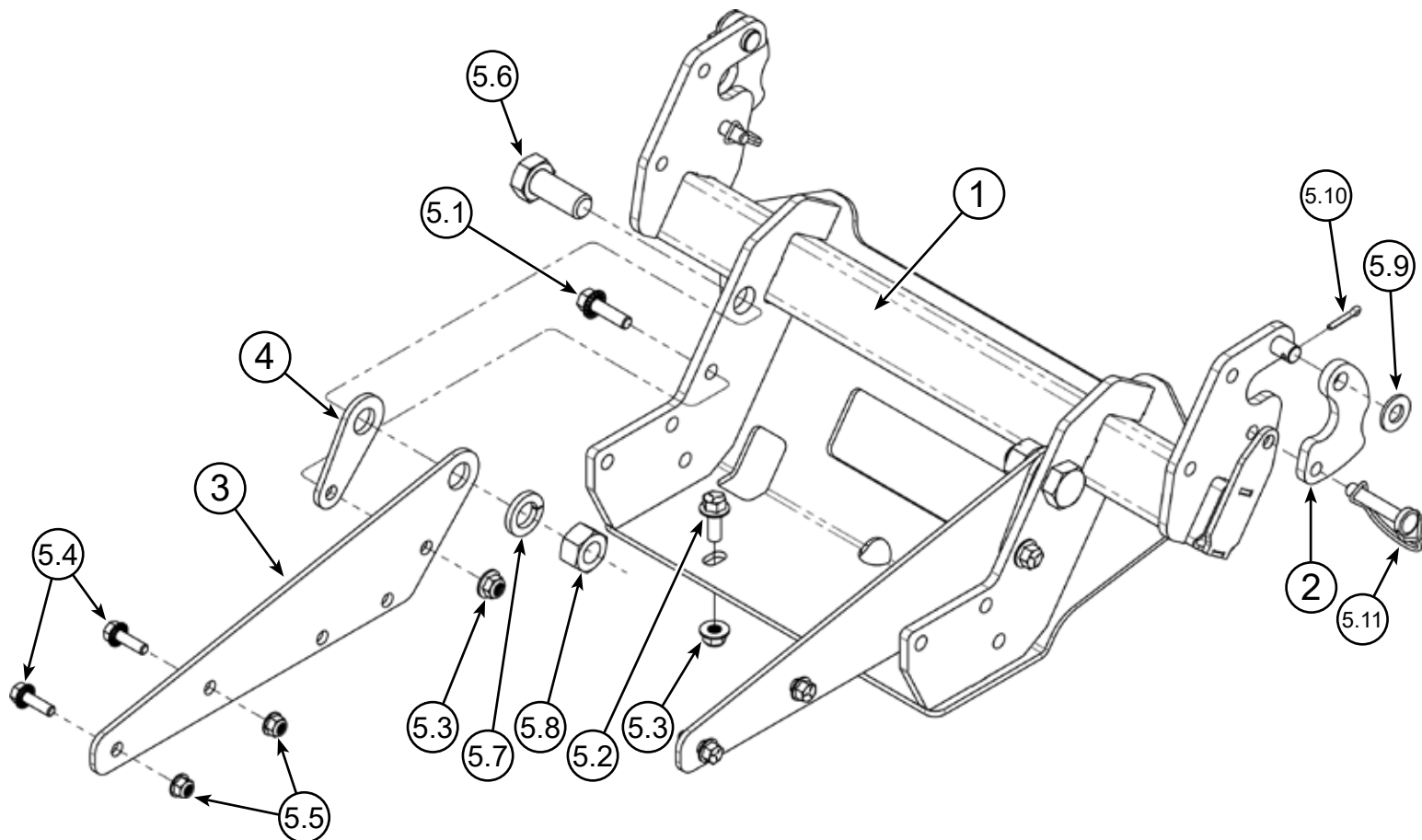


# POLARIS TALL GLACIER ADAPTER

Plow Mount

Part #106630 Rev. A



## Kit Components:

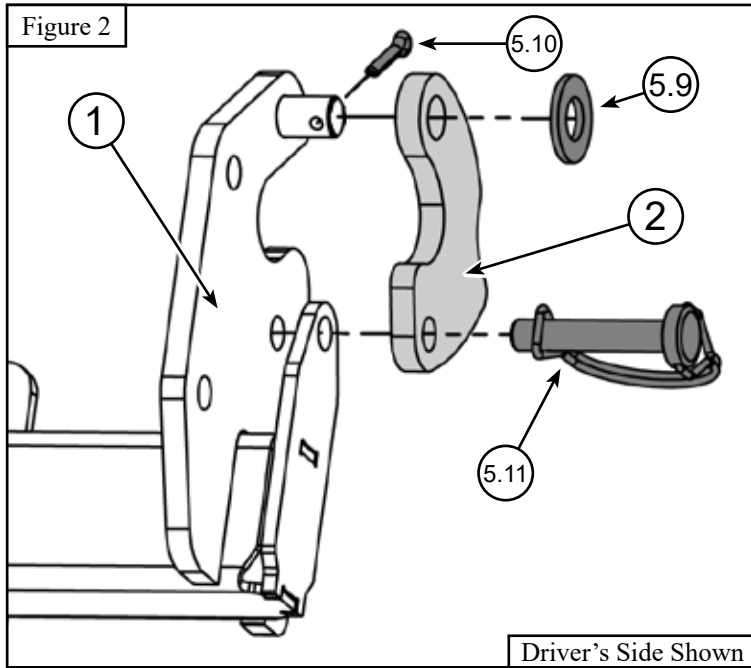
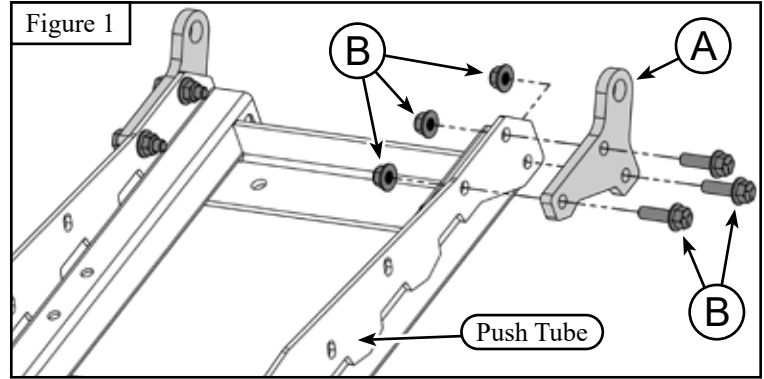
Item #	Qty.	Description	Item #	Qty.	Description
1	1	Tall Glacier Mount Adapter-Weldment (106631)	5.4	4	5/16"-18 X 1.00" Hex Bolt Flange GR5 Serrated
2	2	Plow Adapter Catch (105919)	5.5	4	5/16"-18 Hex Nut Flange Nylock GR5
3	2	4" Extension Gusset (106317)	5.6	2	3/4"-10 X 1.75" Hex Bolt GR5
4	2	Push Tube Extension Spacer (106329)	5.7	2	3/4" Lock Washer
5	1	Hardware Kit (HK-443)	5.8	2	3/4"-10 Hex Nut GR5
5.1	2	3/8"-16 X 1.25" Hex Bolt Flange GR5 Serrated	5.9	2	1/2" Flat Washer
5.2	2	3/8"-16 X 1.00" Hex Bolt Flange GR5 Serrated	5.10	2	5/32" X 0.75" Cotter Pin
5.3	4	3/8"-16 Hex Nut Flange Nylock GR5	5.11	2	3/8" Safety Pin (105188)



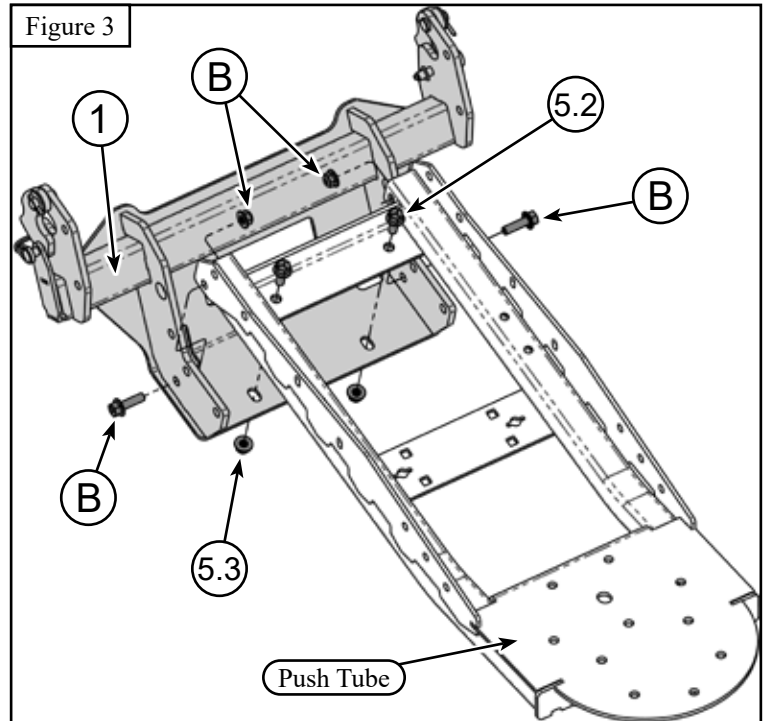
# INSTALLATION INSTRUCTIONS

**Note:** Make sure all hardware needed to complete this mount is in the package. Thoroughly read through and understand the instructions before installing.

1. If push tubes are already assembled, remove the Push Tube Ears (A) from the push tubes and set Hardware (B) aside for a later step. See **Figure 1**. If starting with brand new push tubes, locate the hardware used for attaching the push tube ears and set them aside for later. Use the Push Tube Manual (M106300) for hardware identification.



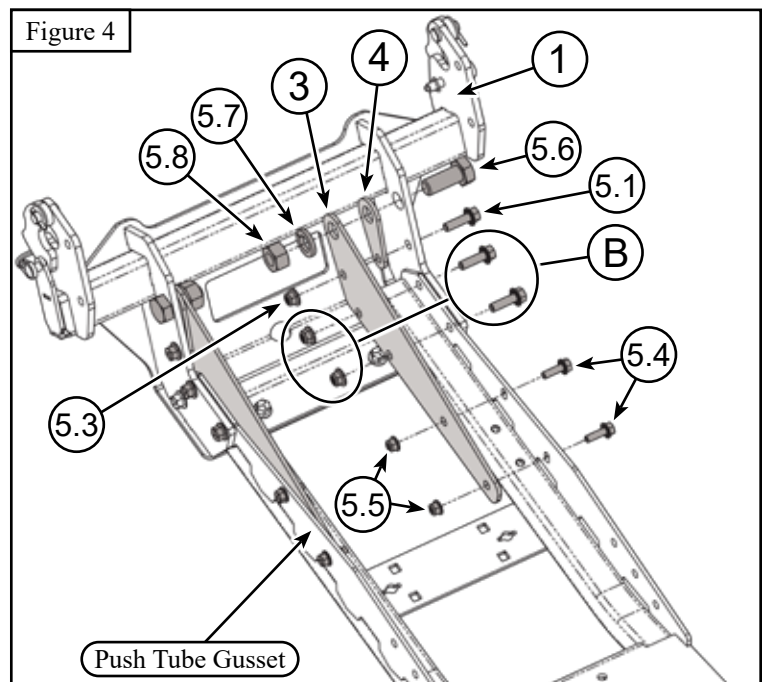
2. Install Plow Adapter Catch (2) onto the Glacier Adapter (1) securing the Catch (2) with Washer (5.9) and Cotter Pin (5.10). Safety Pin (5.11) will be used to secure the bottom of the Plow Catch (2) as shown in **Figure 2**. Repeat this step for the Passenger's Side.



3. Attach the Glacier Adapter (1) to the Push Tube Weldment with Bolts (5.2) through the top gusset on the Push Tubes and through the Glacier Adapter (1). Secure with Nuts (5.3) as shown in **Figure 3**.

4. Use Ear Hardware (B), located in Step 1, to secure the Glacier Adapter (1) to the lower ear mount location on the Push Tubes, as shown in **Figure 3**.

5. Install Gusset (3) and Spacer (4) on the inside of the Glacier Adapter (1) and along the inside of the Push Tube Gusset as shown in **Figure 4**. (Driver's Side is exploded, Mirror on Passenger's Side)



# WIRING INSTRUCTIONS

6. Loosely install all hardware as shown in **Figure 4**, before tightening each gusset evenly.
7. The Bumper Bar, shown in **Figure 5**, needs to be removed so it doesn't interfere with the winch cable when raising and lowering the plow system. Remove the 4 bolts (C) as shown in **Figure 6**. Then remove Bar from the Bumper.
8. With the Plow Adapter Catch (2) open, slide the Plow Mount (1) into place over the Glacier Bar. Swing Plow Adapter Catch (2) around the back of the Glacier Bar and secure using Safety Pin (5.11) as shown in **Figure 6**.

