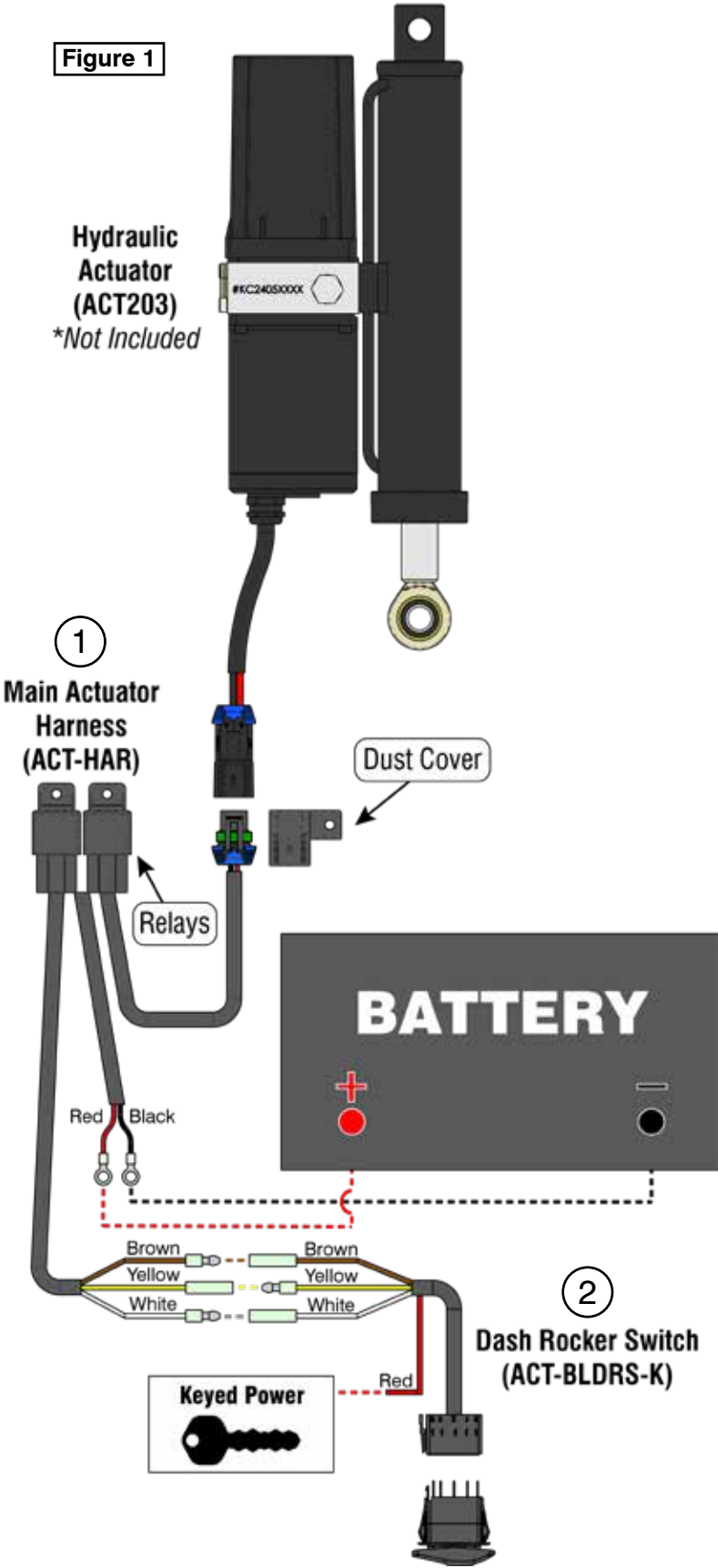


WIRE HARNESS - HYDRAULIC ACTUATOR

Wire Harness

PART #106940 Rev A

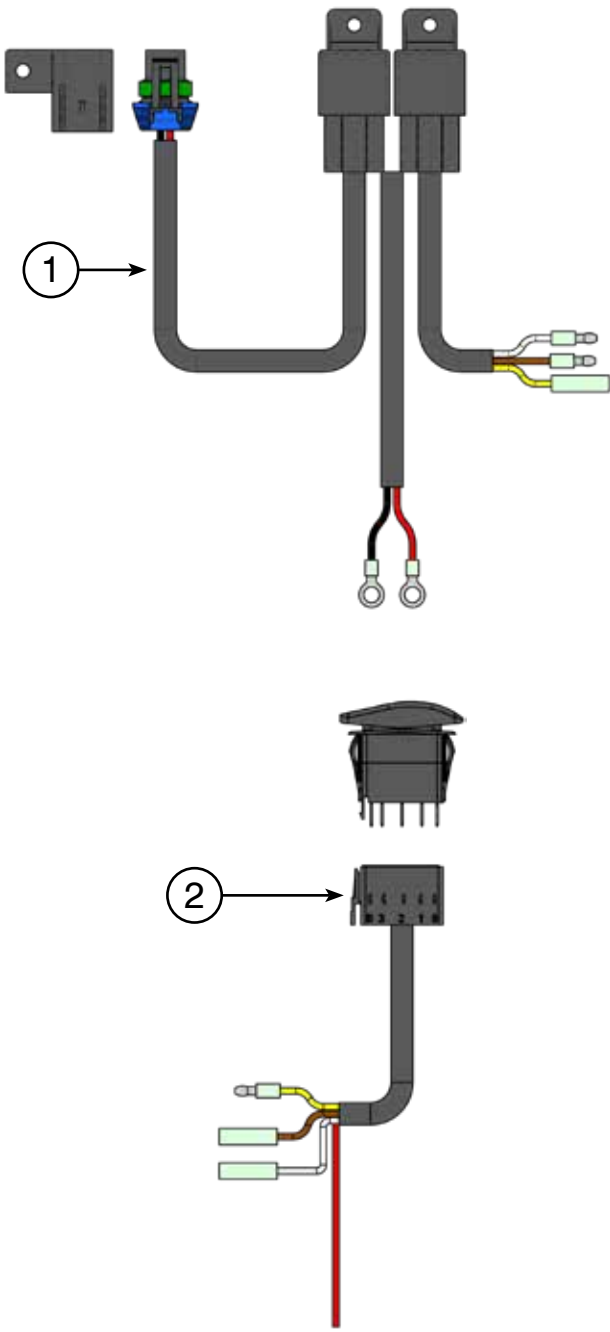
Figure 1



Kit Components:

Item #	Qty.	Description
1	1	ACT-HAR (Actuator Main Relay Harness)
2	1	(ACT-BLDRS-K) Dash Rocker Switch

Note: Make sure components needed to complete this installation are in the package. Thoroughly read through and understand the instructions before installing.



INSTALLATION INSTRUCTIONS



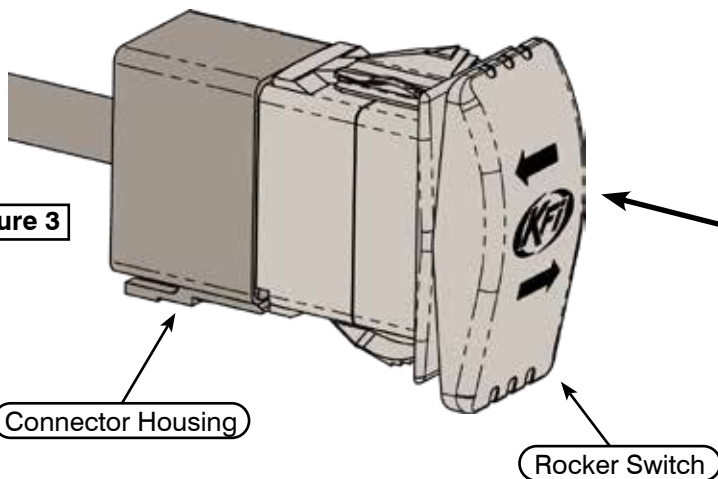
CAUTION

Never route electrical cables across any sharp edges, through or near moving parts, or near parts that become hot.

Installation Instructions

1. Connect the Red and Black wires from the **Main Actuator Harnesses (1)** to the battery. See **Figure 1** for reference.
 - Red wires to the Positive (+) terminal
 - Black wires to the Negative (-) terminal
2. Splice the end of the red wire from the **Dash Rocker Switch (2)** into a power source that is controlled by the ignition. Use a test light to identify a wire that receives power only when the key is in the ON position.
3. Connect the Brown, Yellow, and White wires from the **Dash Rocker Switch (2)** to the **Main Actuator Harness (1)**:
 - Brown (Female) to Brown (Male)
 - Yellow (Male) to Yellow (Female)
 - White (Female) to White (Male)
4. Find a clean and dry location to mount the **Relays**. Make sure the location you choose allows sufficient clearance from all metal components. Drill a mounting hole if required. Secure with zip ties or self tapping screws.
5. Secure the **Dust Cover** of the **Main Actuator Harness (1)** to the front of the machine with zip ties. Position it so the plug connecting to the **ACT203** is easily accessible when the plow is not in use.
6. For additional control options for the Hydraulic Actuator, consider the hand remote (**ACT-HR**), which enables control of both the actuator and the winch with a single remote.

Figure 3



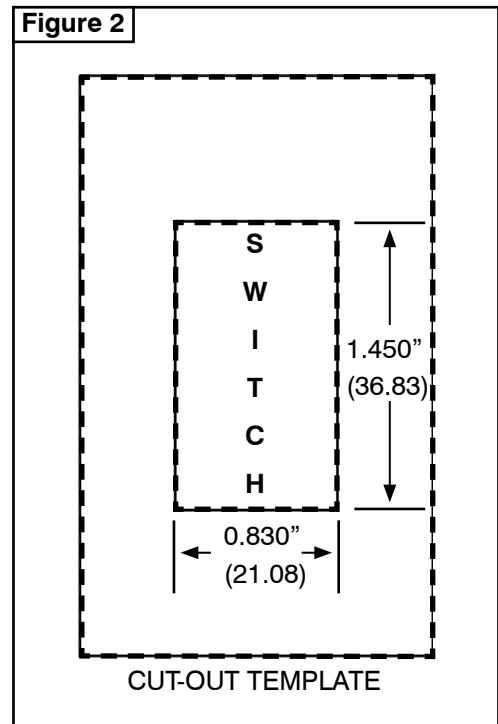
Mounting the Dash Rocker Switch

1. Most UTV's and SxS's have predefined switch locations that are pre-marked for mounting and require finish cut with a knife.
2. Use cut-out dimensions shown below to cut out the switch location if your dash doesn't have the pre marked areas. Measure 1" mark above the template to be sure print is scaled correctly. See **Figure 2**.
3. Before installing the switch in place, ensure it is connected to the rest of the harness by plugging the **Rocker Switch** into the **Connector Housing**. Be sure it is orientated correctly. See **Figure 3**.

AFTER PRINTING, LINE
BELOW SHOULD
MEASURE 1"

← 1" →

Figure 2



Insert the **Rocker Switch** into the **Connector Housing** before mounting it in the dash or a suitable location. Ensure the thicker end of the switch is positioned at the top, with the KFI logo oriented correctly.

