

4500 WINCH MOTOR INSTALLATION

Winch Motor PART #Motor-45-BL
Hardware Kit: N/A

Kit Components:

Qty. Part Description

1..... Bushing (E)

1..... Motor (F)

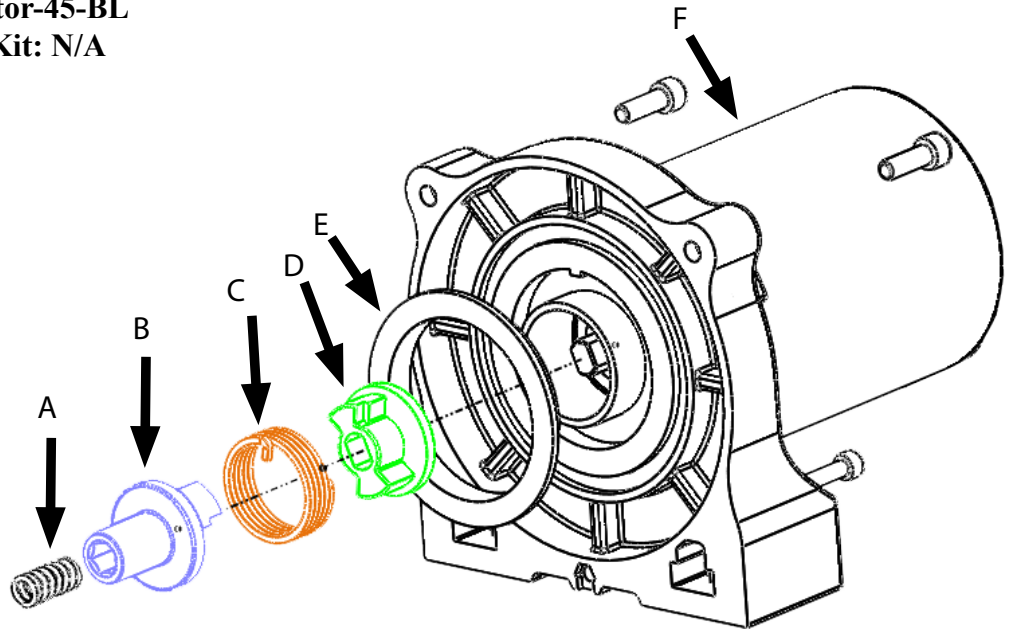
Not Included

1..... Spring (A)

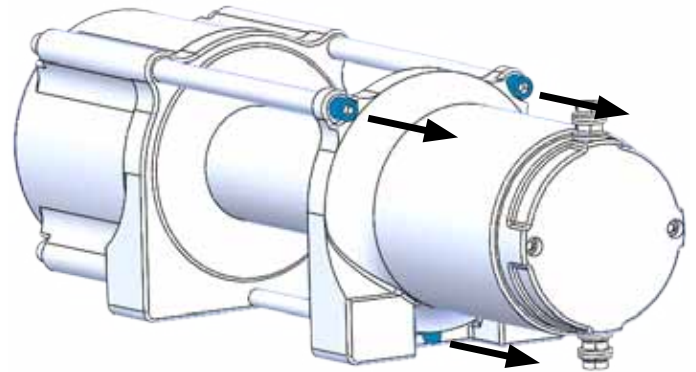
1..... Coupling, II (B)

1..... Spring, Coupling (C)

1..... Coupling, I (D)



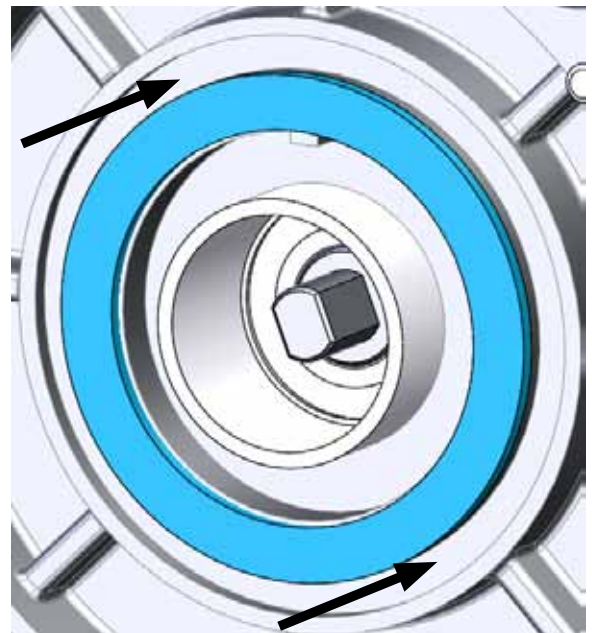
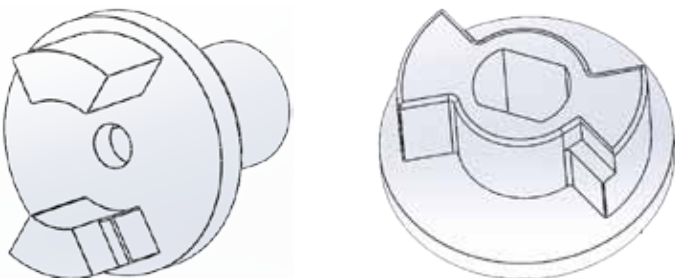
“Figure 1” Exploded View



“Figure 2”

- INSTALLATION INSTRUCTIONS:**
1. Remove the three bolts that attach the motor, as shown in Figure 2.
 2. Remove the Spring (C), Coupler I (D), and Bushing (E) from your original motor. the Bushing has a press fit and can be gently pried out without damage.
 3. Press the plastic bushing (E) into your new motor. Shown in figure 3. **NOTE:** Some new motors come with plastic bushing (E) already installed.

Note: It is very important that the couplers are installed correctly so that your winch performs as it should. there are cut-outs on both couplers that the spring sits in.



“Figure 3”

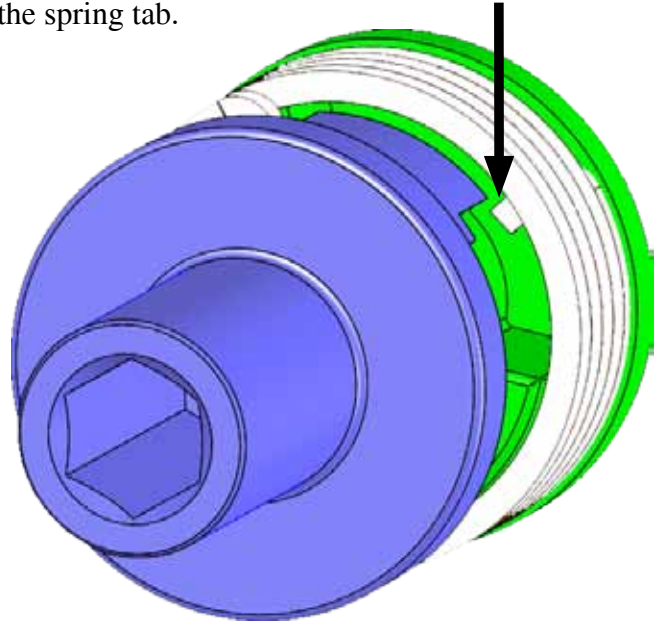
4500 WINCH MOTOR INSTALLATION

INSTALLATION INSTRUCTIONS CONTINUED:

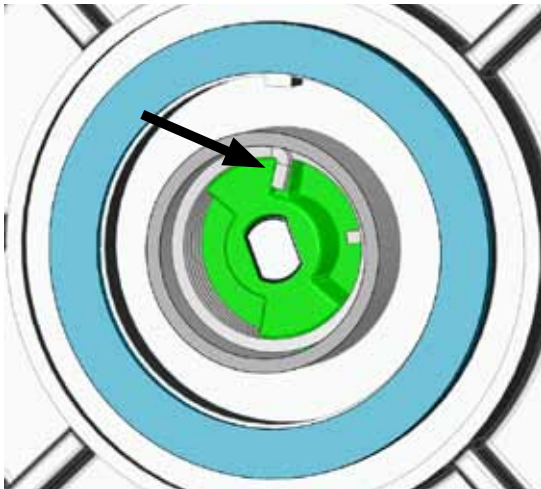
4. Install Coupler I (D) onto the motor shaft



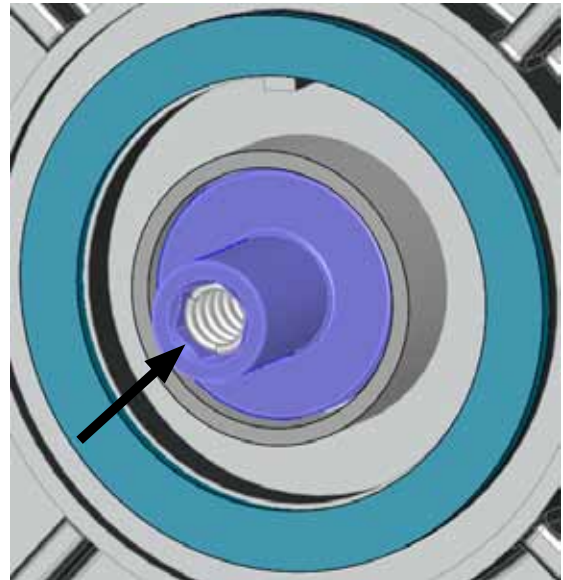
Verify that the cutout on Coupler II (B) lands over the spring tab.



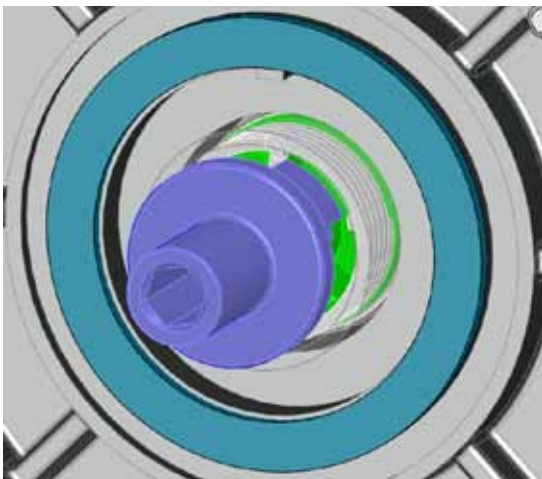
5. Install the Couling spring (C) in the space between the coupler (D) and the housing. Orientate the spring and coupler so the tab coming off the spring lands in the cutout in the coupler.



7. Insert the small Spring (A) into the hex opening on the Coupler II (B).



6. Insert Coupler II (B) so that the flange with the cutout sits over the the spring tab on the bottom of the spring



8. You can now install the new motor on your winch with the three bolts removed in step 1 (Shown in figure 2).