

Honda Rancher 420 Mount

Winch Mount

PART # 100705

Kit Components:

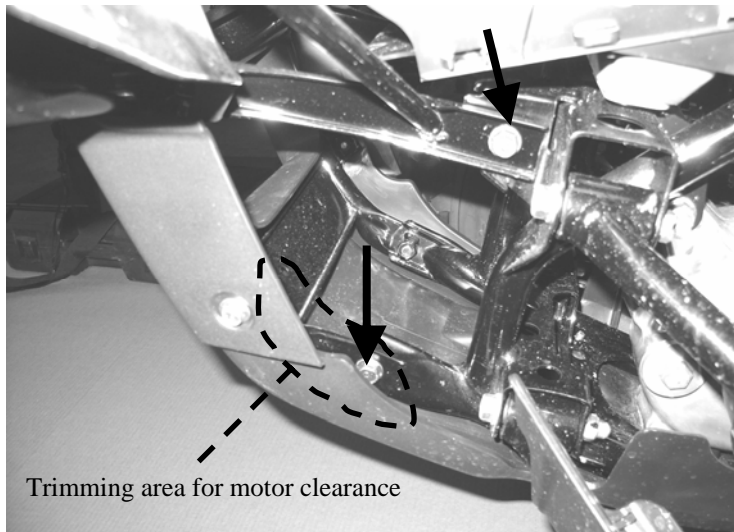
<u>Qty</u>	<u>Part Description</u>
1.....	Winch Mount
4.....	1/4" x 1" x 1-1/2" U-Bolt
2.....	5/16" x 1-1/4" x 1-3/4" U-Bolt
8.....	1/4" Nylock Nuts
4.....	1/4" Flat Washers
2.....	M8-1.25 x 20mm Flat HD Screw
2.....	5/16" x 3/4" Flat HD Screw
5.....	5/16" Nylock Nuts
5.....	5/16" Flat Washers

INSTALLATION INSTRUCTIONS:

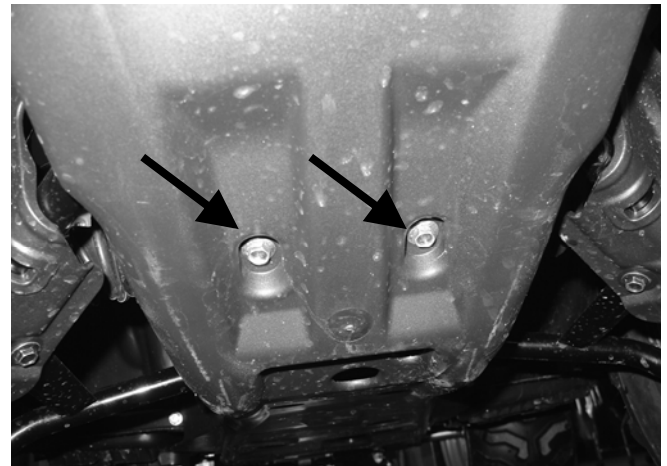
1. Remove the top (2) plastic rivets and the bottom (2) bolts to remove the front plastic bumper cover. "Figure 1"
2. Remove (4) bottom skid plate bolts for easier assembly. Skid plate will hang in position. Two of the four bolts are shown in figure 2. The other two bolts are farther back on the skid plate. "Figure 2"
3. Remove the front bumper by removing the (4) Bumper to Frame bolts as shown in Figure 3, the (2) Bumper to Top Rack bolts as shown in Figure 4, and the (2) bumper to headlight bolts not shown.



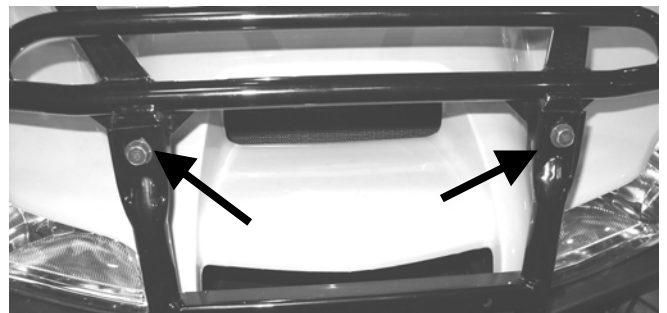
"Figure 1" Remove front Plastic Bumper Cover



"Figure 3" Remove Bumper to Frame bolts.
Possible trimming areas for winch motor clearance



"Figure 2" Remove (4) Bottom Skid plate Bolts



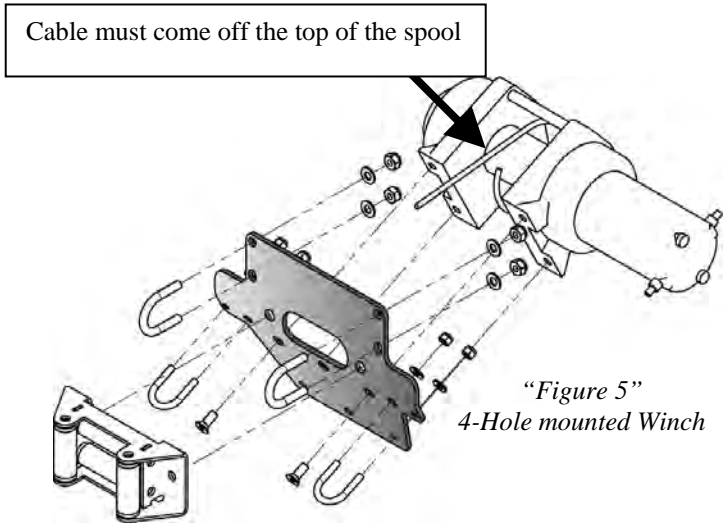
"Figure 4" Remove Bumper to Rack bolts.

4. Assemble your winch to the mount plate as shown in Figures 5 and 6. Do not install the Fairlead at this time.

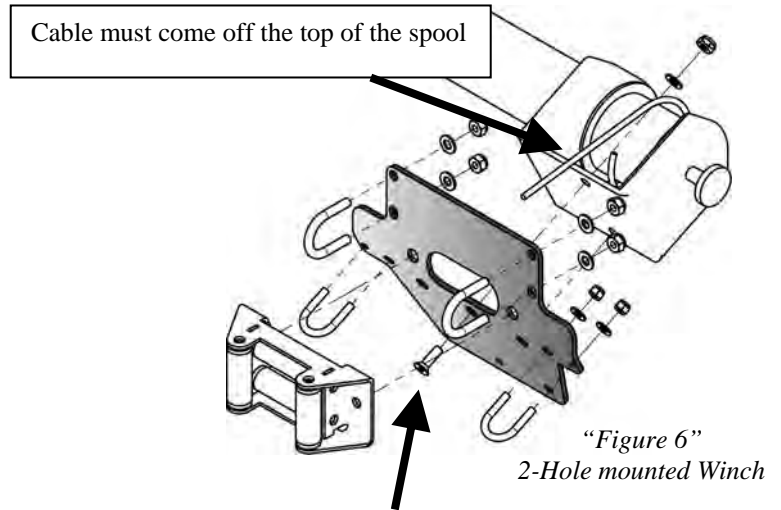
NOTE: The Cable of your Winch will need to come off the Top of your spool as shown in Figure 5 and 6. The winch motor can go on either side (LH or RH).

- a. If you are installing an older Warn or other 4-hole mounted winches, you will need to utilize the supplied Flat Head Screws for the top (2) mounting locations. Some winches use 5/16" screws and some use M8 screws. (both 5/16" and M8 screws are supplied and the newer RT and XT Warn Winches will need the M8 screws)
- b. If you are installing a 2-hole mounted winch such as Superwinch or similar you will be using (1) of the supplied 5/16" Flat head screws for the top Mounting hole.

5. Assemble the winch assembly to your removed bumper as shown in Figure 5,6 and 7. Do not tighten at this time.
 - a. 5/16" U-bolts to the Top and ¼" U-bolts to the bottom
6. Re-assemble your bumper to your ATV but do not tighten until all bolts are started.
7. Tighten the Top 5/16" U-bolts and then Tighten the Bottom ¼" U-bolts.
8. Re-assemble your Bottom Skid plate From Step 2. (You may need to trim the sides of the skid plate as shown in Figure 3 for Winch Motor Clearance)
9. Trim off 3/8" from your Plastic Front Bumper Cover as shown in figure 8.
10. Re-assemble the Bumper Cover. (extra Trimming may be required for proper fit-up and also motor clearance as shown in Figure 3)
11. Assemble Your Fairlead.
12. Using the instructions provided with your winch, wire accordingly.



"Figure 5"
4-Hole mounted Winch



"Figure 6"
2-Hole mounted Winch



"Figure 7"
Assemble Winch
Assembly to Bumper

Suggested Contactor Location

- Use Supplied ¼" U-bolts. Assemble loose and connect wires. Once the wires are connected rotate contactor into location and tighten the u-bolts.

