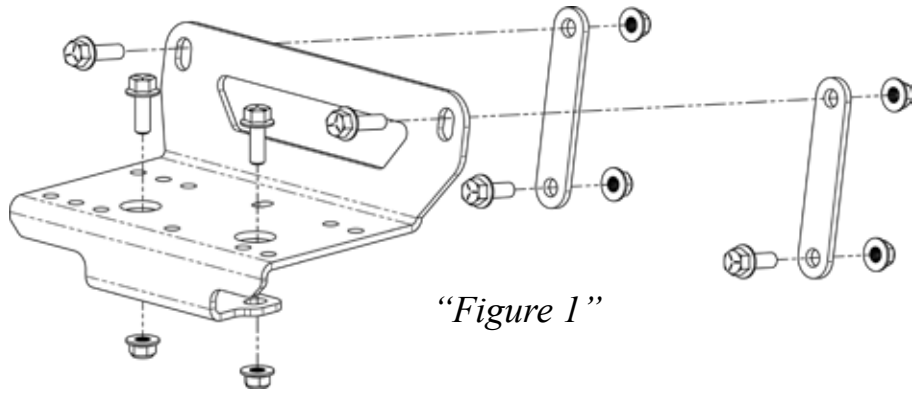


# JOHN DEERE GATOR XUV550/RSX850i

Winch Mount      PART # 100940 Rev C  
 Hardware Kit: HK-413

## Kit Components:

| Qty.   | Part Description                |
|--------|---------------------------------|
| 1..... | Winch Mount Plate               |
| 2..... | Strength Plate                  |
| 4..... | 3/8"-16 x 1" Hex Flange Bolt    |
| 2..... | 3/8"-16 x 1.25" Hex Flange Bolt |
| 6..... | 3/8"-16 Hex Flange Nut          |
| 8..... | 3/8" Flat Washer (Not Used)     |
| 1..... | UTV Mini Rocker Kit (HK-031)    |



## INSTALLATION INSTRUCTIONS:

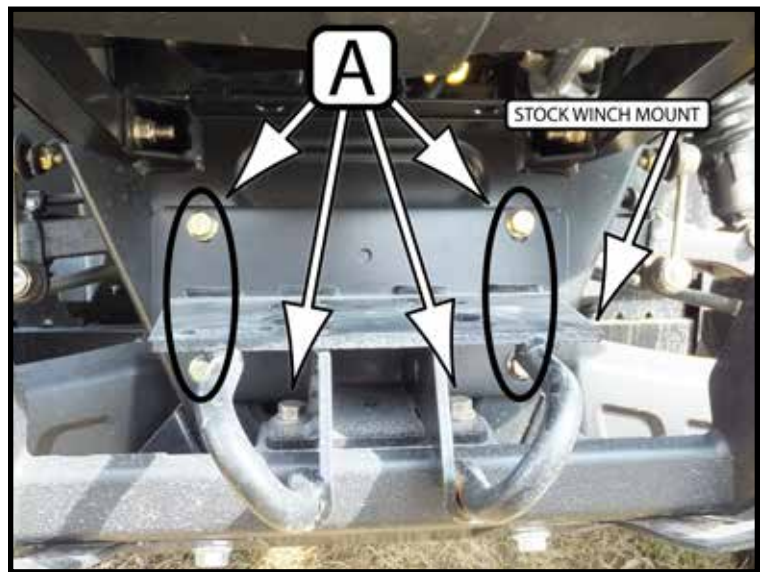
**If there is a stock winch mount (Figure 1) installed follow Step 1, if not skip to Step 2.**

1. Remove nuts, bolts and strength plates (A) as shown in Figures 2&3.

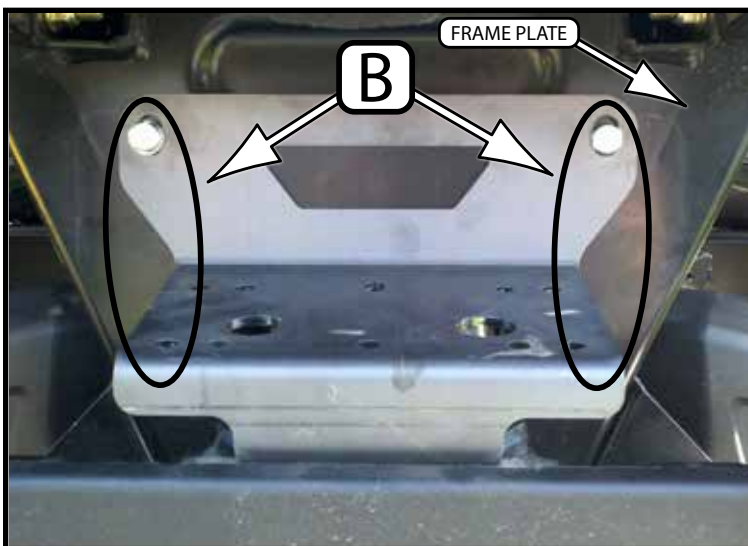
*Note: Be sure not to drop the nuts as they are very hard to get out.*

2. Place mount plate into position. Install rear bolts, nuts and strength plates (B) as shown in Figure 3. The 1.25" Hex Flange Bolts are the top two bolts.(Only bolts visible in Figure 4.) Leave the hardware loose at this time.

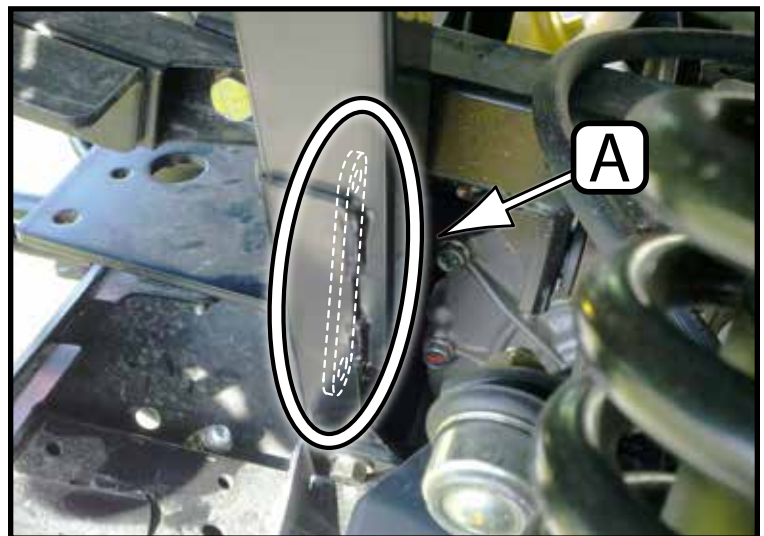
*Note: Strength plates go behind the frame plate. See Figure 3 for location.*



"Figure 2" Stock Mount Removal

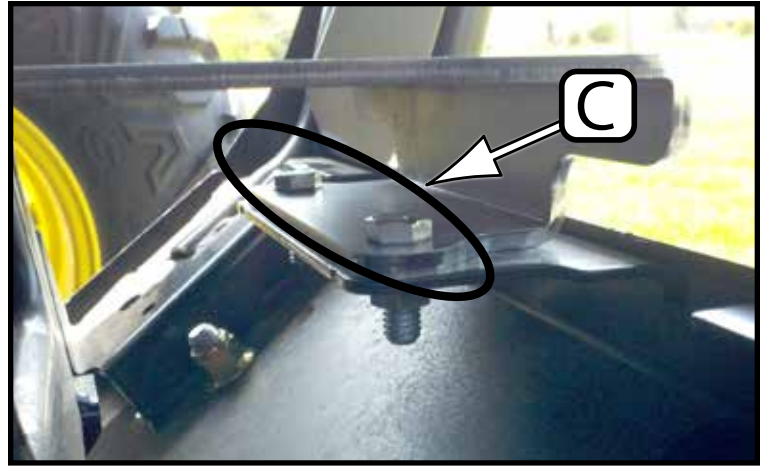


"Figure 4" Mount Plate and Strength Plate Install



"Figure 3" Strength Plate Location  
 Note: Strength Plate is behind the frame.

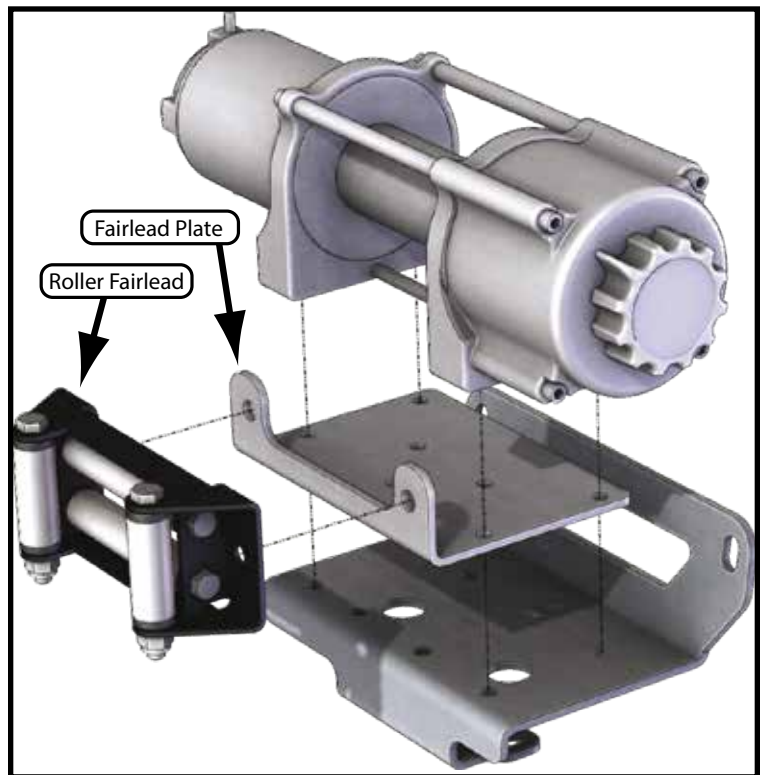
3. Bolt lower portion of mount plate using the remaining 3/8" hardware provided with your winch mount.
4. Tighten all mount hardware at this time.
5. Install roller fairlead to fairlead plate as shown in Figure 6 using the hardware provided with your winch.
6. Install fairlead bracket assembly and winch to winch mount using the hardware provided with your winch. See Figure 6. See Figure 7 for winch hole patterns.



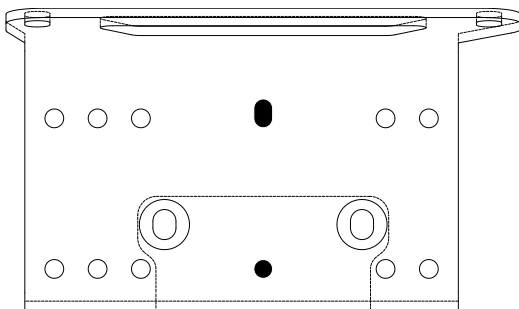
*"Figure 5" Winch Mount Lower Bolts Install*

*Note: On some winches it maybe easier to install wiring to the winch before installing the winch to the mount plate.*

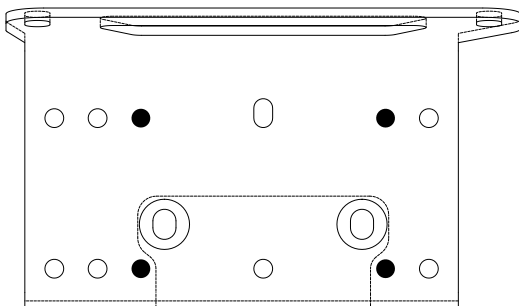
7. Use the instructions provided with your winch, wire accordingly.



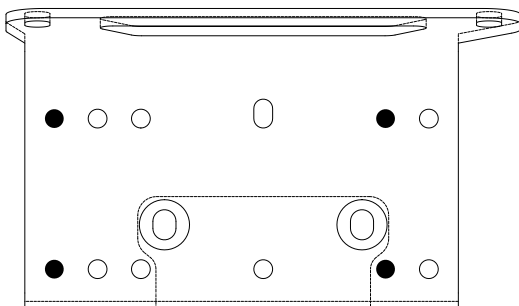
*"Figure 6" Fairlead Bracket and Winch Install*



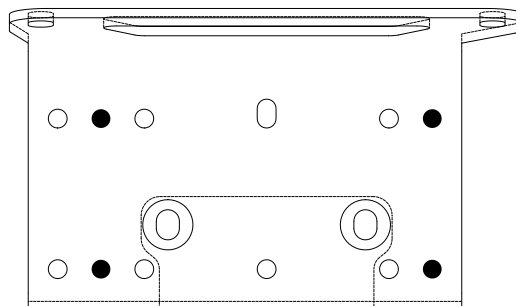
2 Hole Winch Pattern



Standard Winch Hole Pattern



XUV Wide Winch Hole Pattern



RSX Wide Winch Hole Pattern

*"Figure 7" Winch Hole Pattern*

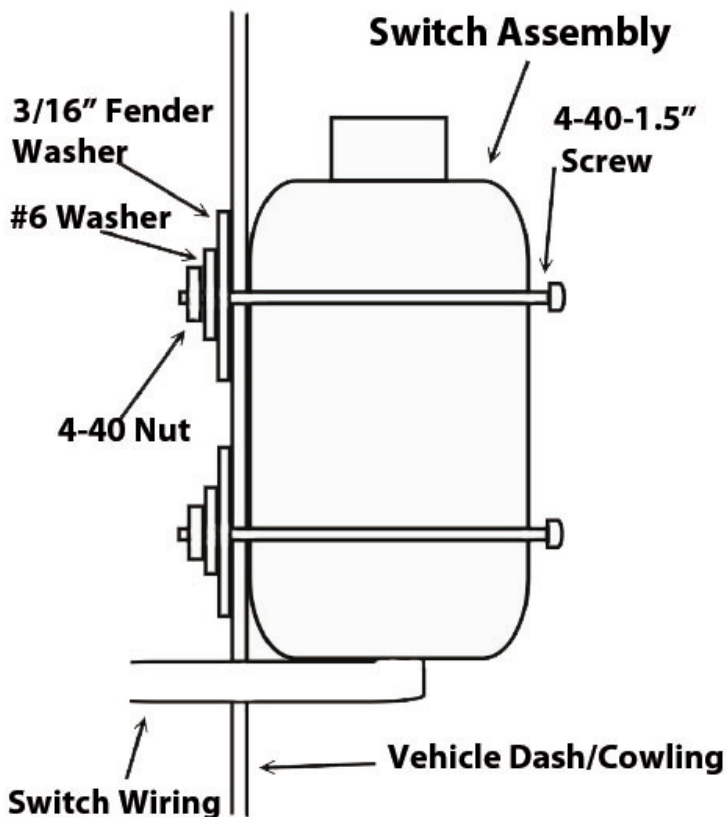


## WIRING INFORMATION

1. For contactor location please see “Figure 8”. *This is located under the hood of the machine.*
2. Mini-Rocker Switch Hardware kit. This allows you to mount your usual handle bar mounted switch to almost any desired location.
  - a. Remove handlebar mount hardware from the switch.
  - b. Locate desired mounting location
  - c. Mark and drill two switch holes through dash using switch housing as a template
  - d. Drill a 3rd hole for the switch wiring.
  - e. Assemble per Figure 10.
3. Find a location that suits your purposes for the mini-rocker switch and hand remote.
4. Wire the red ignition wires from controllers to a key controlled wire. Usually a good spot for this is the red wire on the accessory plug.

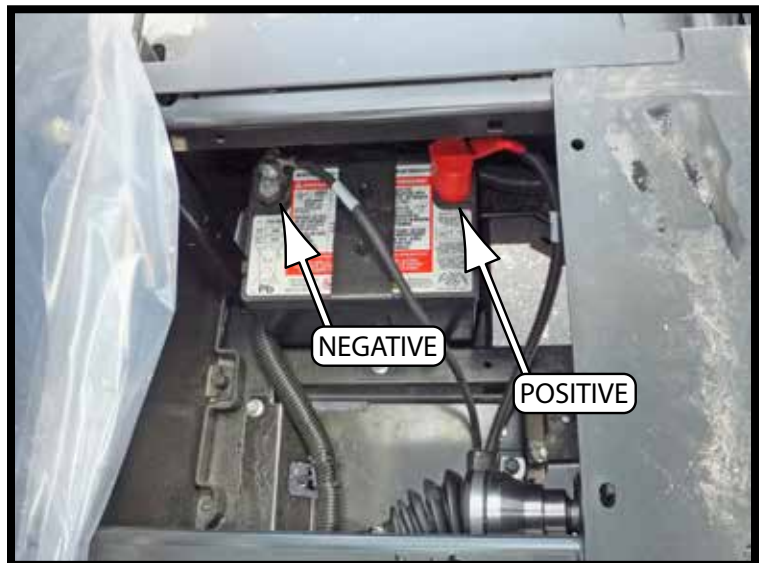


“Figure 8” Contactor Location



### Optional Switch Mount Instructions\*

“Figure 10” Mini-Rocker Mounting



“Figure 9” Battery Location  
(Battery is located under steering column.)