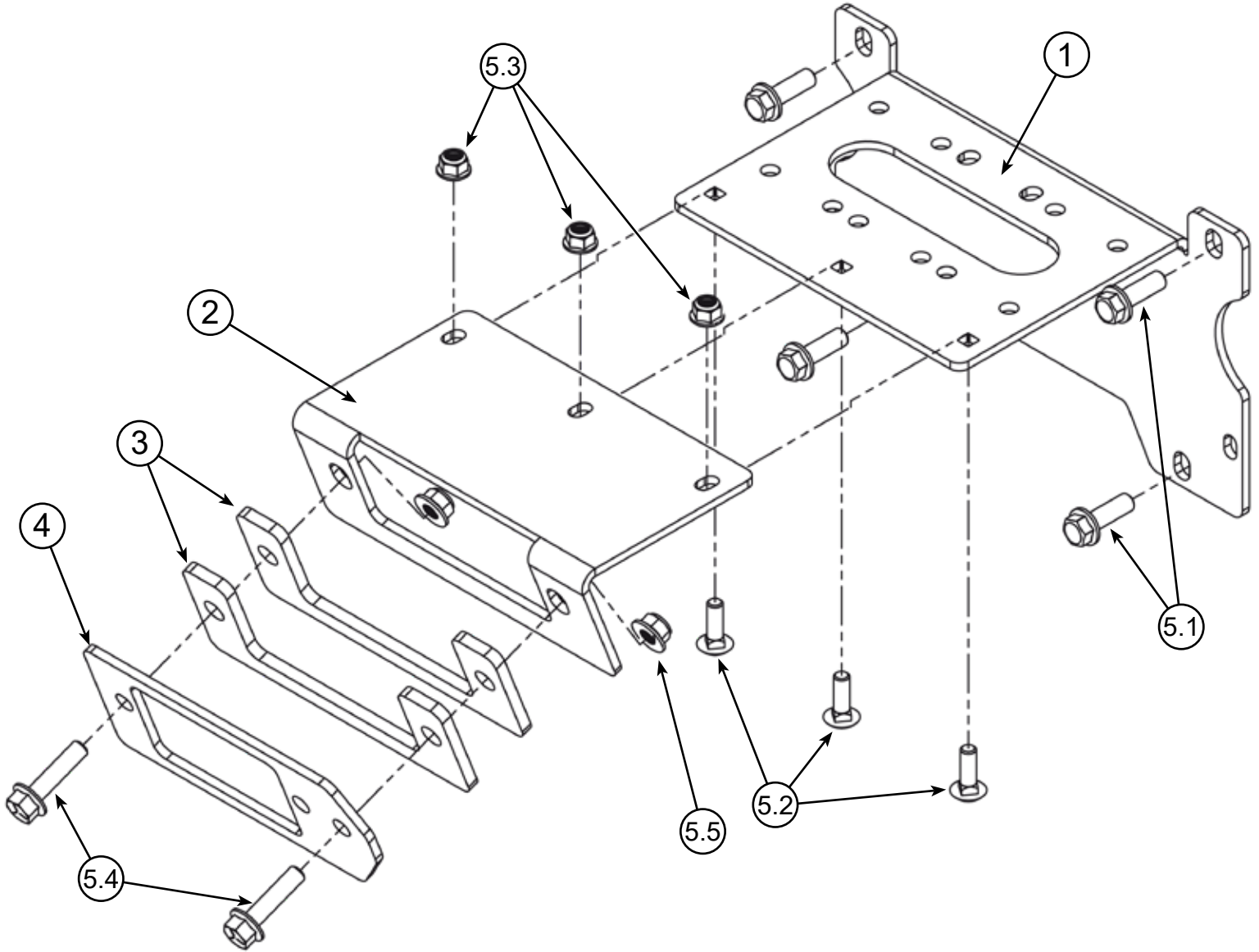


POLARIS RANGER XD 1500

Winch Mount

Part #102180 Rev. A



Kit Components:

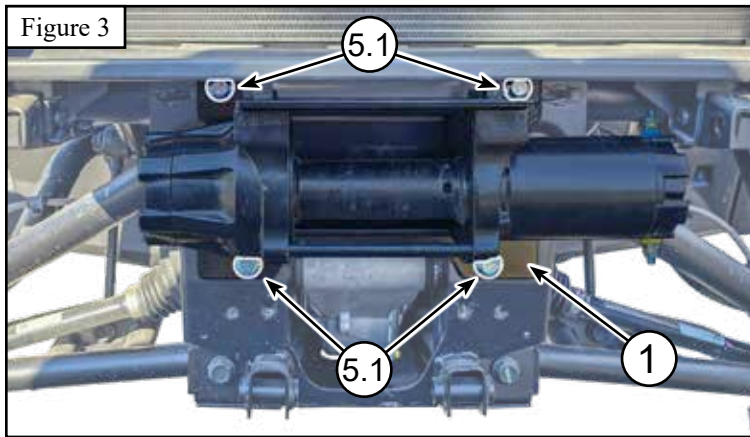
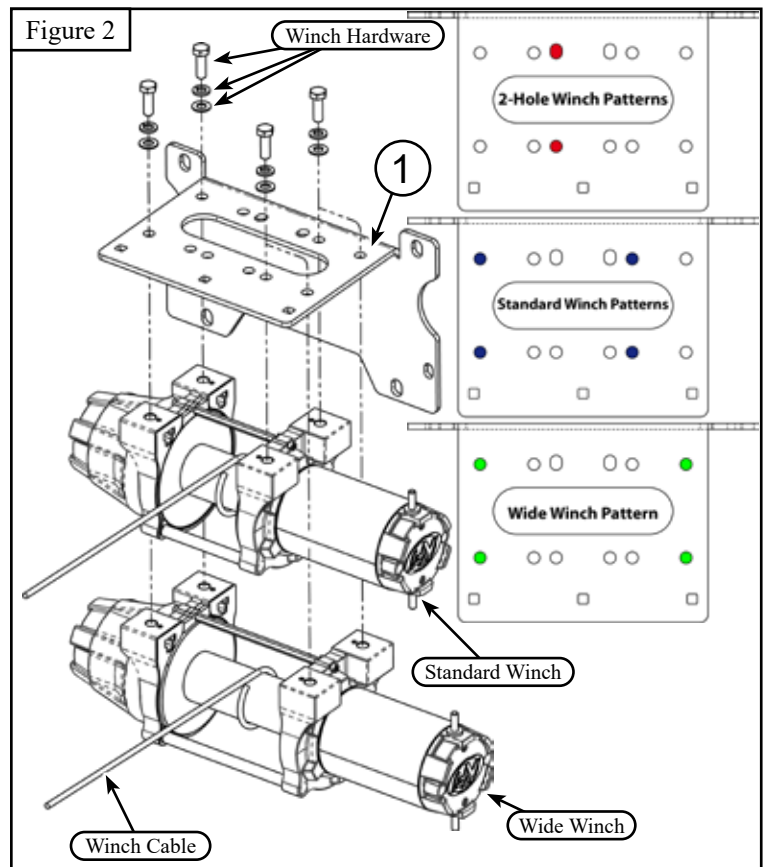
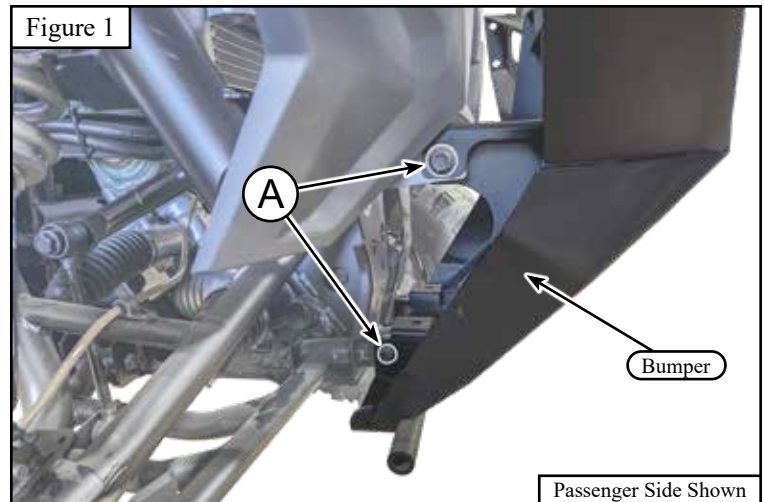
Item #	Qty.	Description	Item #	Qty.	Description
1	1	Winch Mount (102181)	5.1	4	M10-1.5 X 30 Hex Bolt Flange GR8.8
2	1	Front Bracket (102182)	5.2	3	5/16"-18 X 1.00" Carriage Bolt GR5
3	2	Fairlead Spacer (102183)	5.3	3	5/16"-18 Hex Nut Flange Nylock GR5
4	1	Standard Fairlead Adapter (101288)	5.4	2	3/8"-16 X 1.5" Hex Bolt Flange GR5 Serrated
5	1	Hardware Kit (HK-442)	5.5	2	3/8"-16 Hex Nut Flange Nylock GR5



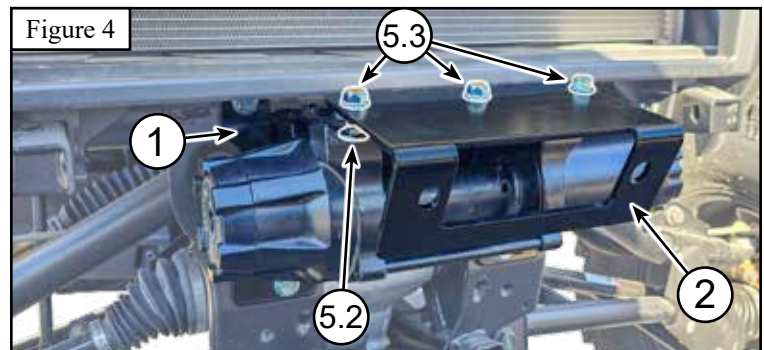
INSTALLATION INSTRUCTIONS

Note: Make sure all hardware needed to complete this mount is in the package. Thoroughly read through and understand the instructions before installing.

1. Remove the Bumper from the machine by removing Bolts (A) from the driver and passenger side. Set the Bumper and Hardware (A) aside for a later step. See **Figure 1**.
2. Install the Winch on Winch Mount (1). The Winch will be installed upside down and should have the Cable coming off the Winch as shown in **Figure 2**. Use Hardware provided with your Winch. *If installing a KFI Winch, use 25mm long bolts and tighten to 17 FT/Lbs.*
3. Once the winch is installed correctly, install the Winch Mount (1) on the machine as shown in **Figure 3**. Bolts (5.1) will be used to secure the mount to the frame. Tighten this hardware evenly.

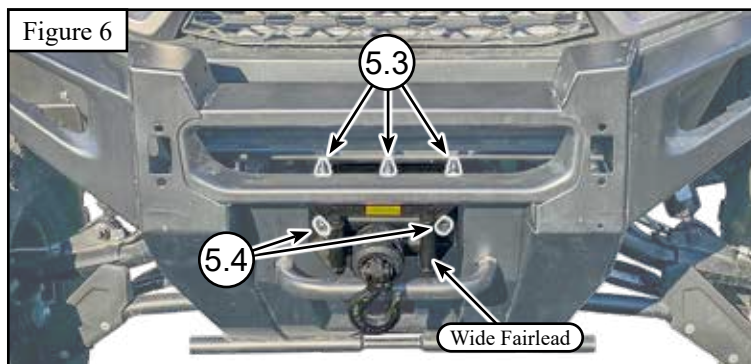
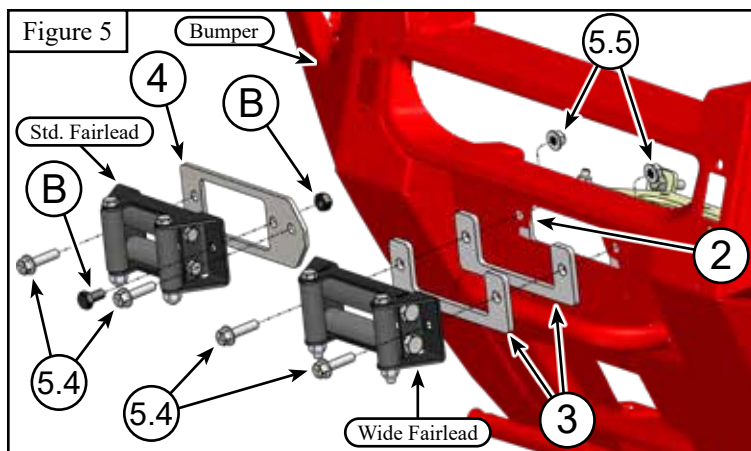


4. Place the Front Bracket (2) over the top of Winch Mount (1) and loosely secure with 3 Carriage Bolts (5.2) and Nuts (5.3) as shown in **Figure 4**.
5. Reinstall the Bumper on the machine with Hardware (A) as shown in **Figure 1**. Tighten Hardware (A) to OEM specs.



INSTALLATION INSTRUCTIONS

- If you are installing a wide fairlead, continue to the next step. For a standard winch/fairlead, you will need to attach the Standard Fairlead to the Fairlead Adapter (4) using a single Bolt and Nut (B) from your winch kit as shown in **Figure 5**.
- Use Spacers (3) to create enough clearance behind the fairlead. Assemble Bolts (5.4) through the Fairlead, Spacers (3), Bumper, and through the Fairlead Bracket (2). Secure with Nuts (5.5) as shown in **Figure 5**.
- Tighten Hardware from Steps 4, 6 and 7 evenly. This hardware is highlighted in **Figure 6**. (Wide fairlead shown)
- Run your winch cable through the fairlead opening and attach your winch hook according to your winch manual.



Wiring Information

- The contactor can be installed under the Pulse Bar under the Hood as shown in **Figure 7**.
- Connect your main red and black power wire for your winch, from your contactor, to the terminals **FEEDING** the Pulse Bar as shown in **Figure 7**.
- The **RED SIGNAL WIRE** for the rocker switch should be attached to the keyed power wire of a Polaris Plug designed for the Pulse Bar. This is the Middle, Blue Wire on the KFI 101505 (purchased separately) as shown in **Figure 8**.
- The **RED SIGNAL WIRE** for your rocker switch could alternatively be connected to the Keyed Power controlling the Pulse Bar instead of purchasing a plug for the pulse bar. Confirm it is Keyed Power with a test light or multimeter. See **Figure 7**.

