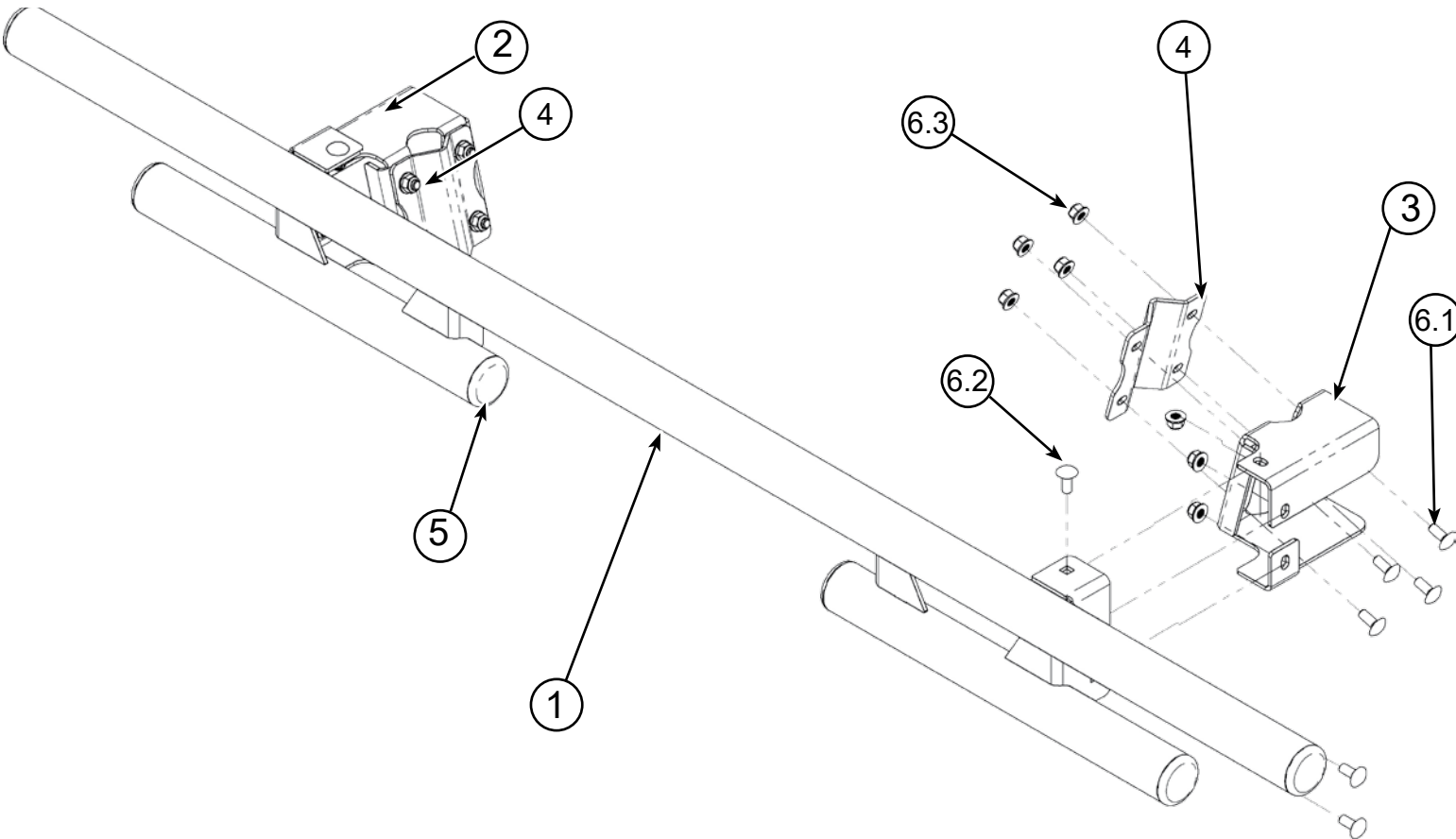


# KAWASAKI RIDGE REAR BUMPER

Formed Bumper PART #102230



## Kit Components:

Item #	Qty.	Description	Item #	Qty.	Description
1	1	Rear Bumper Formed Ridge (101676)	6	1	Hardware Kit HK-452
2	1	Bumper Mount Driver Side (102231)	6.1	8	5/16"-18 X .75" Carriage Bolt Short Neck GR5
3	1	Bumper Mount Passenger Side (102232)	6.2	6	5/16"-18 x .75" Carriage Bolt Short Neck GR5 Black
4	2	Bumper Mount Clamp (102233)	6.3	14	5/16"-18 Hex Nut Flange Nylock GR5
5	6	Bumper Tube Cap (P800237)			



# INSTALLATION INSTRUCTIONS

**Note: Ensure all necessary hardware is included in the package before beginning installation. Carefully read and fully understand the instructions before proceeding..**

1. During installation, leave all hardware hand-tight until the manual instructs you to fully tighten. Tightening hardware too early may cause alignment issues.
2. Use a soft hammer to install bumper tube caps (5)
3. Locate rear frame tubes A and B as shown in **Figure 1**. Position the Driver Side Bumper Mount (3) and Bumper Mount Clamp (3) as illustrated in **Figure 2**. Secure loosely using bolt (6.1) and nut (6.3). Repeat the process on the Passenger Side using parts (2 & 4), again referencing **Figure 1**.

*Note: With assistance, measure down 3.0 inches as shown in Figure 2. loosely tighten one of the Bolts (6.1) and nut (6.3) just enough to hold the brackets in place.*

4. Place Bumper (1) onto the installed brackets (2 & 3) as shown in **Figure 3**. Use bolts (6.2) and use nuts (6.3) to secure the bumper. Repeat on both sides.
5. Once the bumper is in place, square and level it to the bed , recheck the 3.0" bracket measurement.
6. Finally, evenly tighten all hardware to complete installation.

