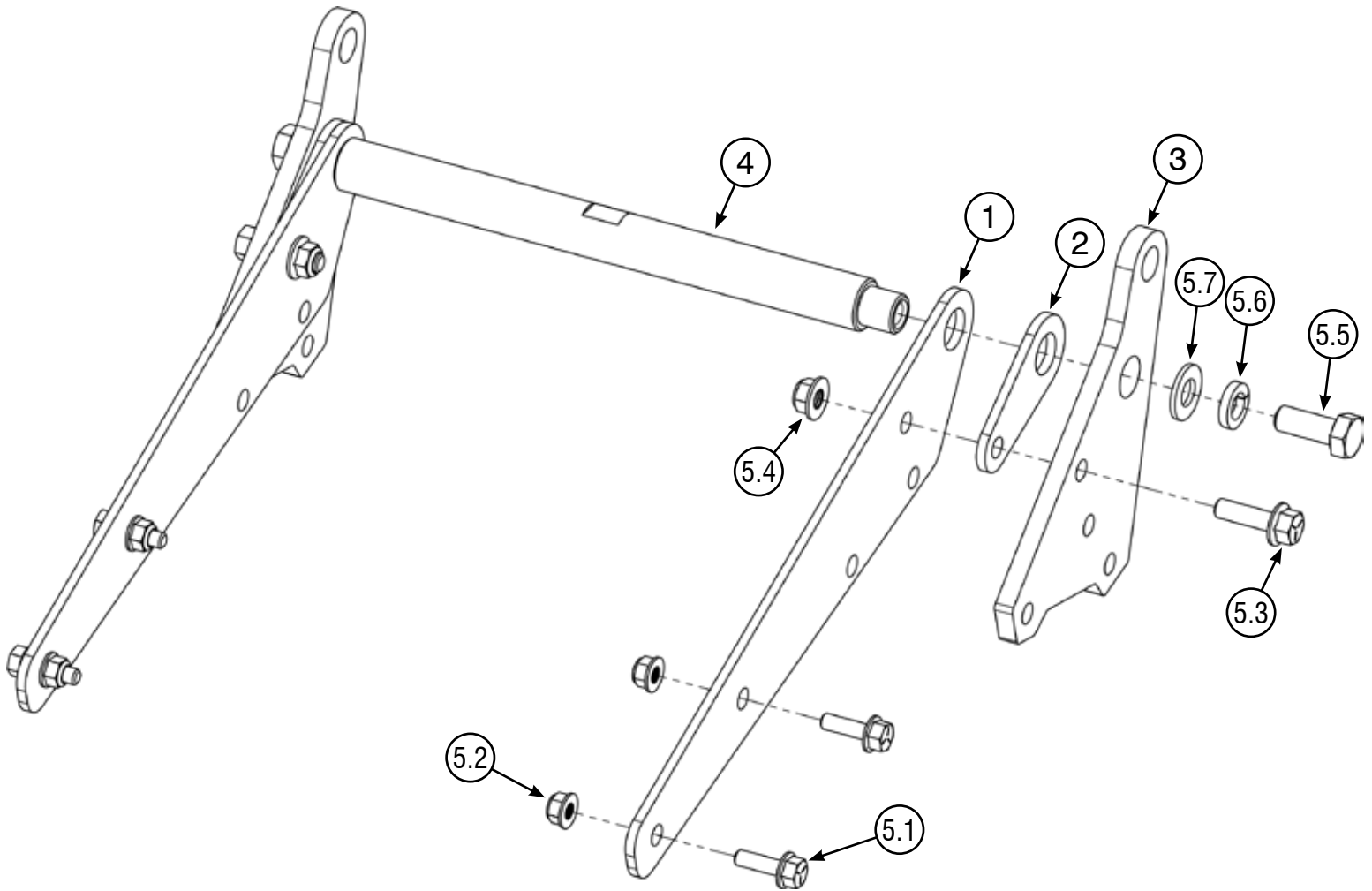


PRO 2.0 - 3 INCH LEVELING KIT

Plow Accessory

PART #106323 Rev A



Kit Components:

Item #	Qty.	Description	Item #	Qty.	Description
1	2	3" Gusset Plate (106548)	5.2	4	5/16"-18 Hex Flange Nylock Nut
2	2	Level Kit Spacer (106329)	5.3	2	3/8"-16 x 1.25" Hex Bolt Flange
3	2	3" Level Ear (106549)	5.4	2	3/8"-16 Hex Flange Nylock Nut
4	1	Level Kit Rod (106399)	5.5	2	1/2"-13 X 1.25" Hex Bolt
5	1	Hardware Kit (HK-446)	5.6	2	1/2" Lock Washer
5.1	4	5/16"-18 X 1.00" Hex Bolt Flange	5.7	2	1/2" Flat Washer



INSTALLATION INSTRUCTIONS

Notice

Torque bolts to ANSI Specs (or OEM specs if applicable), unless otherwise stated. After the first use and at the start of each season, check torque.

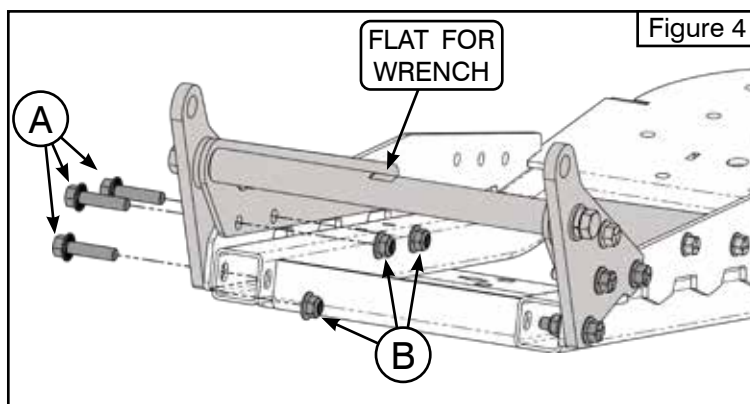
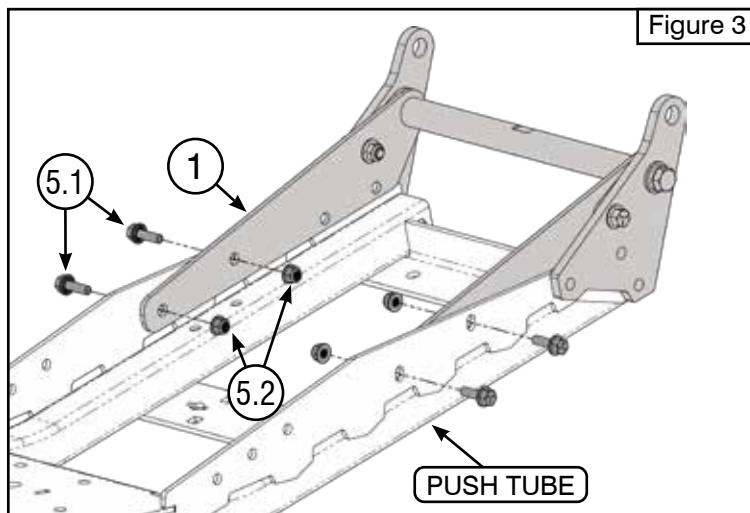
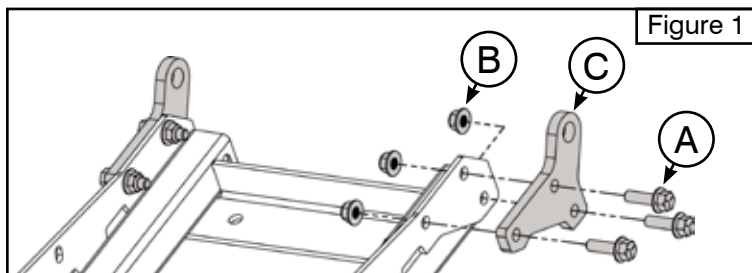
Note: Make sure all hardware needed to complete this mount is in the package. Thoroughly read through and understand the instructions before installing.

Installation Instructions

1. If installed, remove pin attachment brackets (C) and hardware (A and B) as shown in **Figure 1**. If not installed, proceed to **Step 2**.

Note: Save hardware (A and B) for reuse in Step 5.

2. Loosely assemble gusset (1), spacer (2), and ear (3) onto rod (4) using bolts (5.5), lock washers (5.6), and flat washers (5.7). Refer to **Figure 2** for orientation.
3. Loosely install bolts (5.3) and lock nuts (5.4) through the ear (3), spacer (2), and gusset (1). See **Figure 2**.
4. Place the subassembly onto the push tube. Ensure gusset (1) is placed inside the rib on the push tube. Loosely install front bolts (5.1) and lock nuts (5.2) as shown in **Figure 3**.
5. Reinstall bolts (A) and nuts (B) removed in **Step 1** into their original positions. See **Figure 4**.
6. Once all hardware is started, tighten all hardware evenly. See **Figure 5**.



Note: When tightening bolts (5.5), use a 7/8" wrench or an adjustable wrench on the flat spot of rod (4) to prevent it from rotating. See **Figures 2 and 4**.

