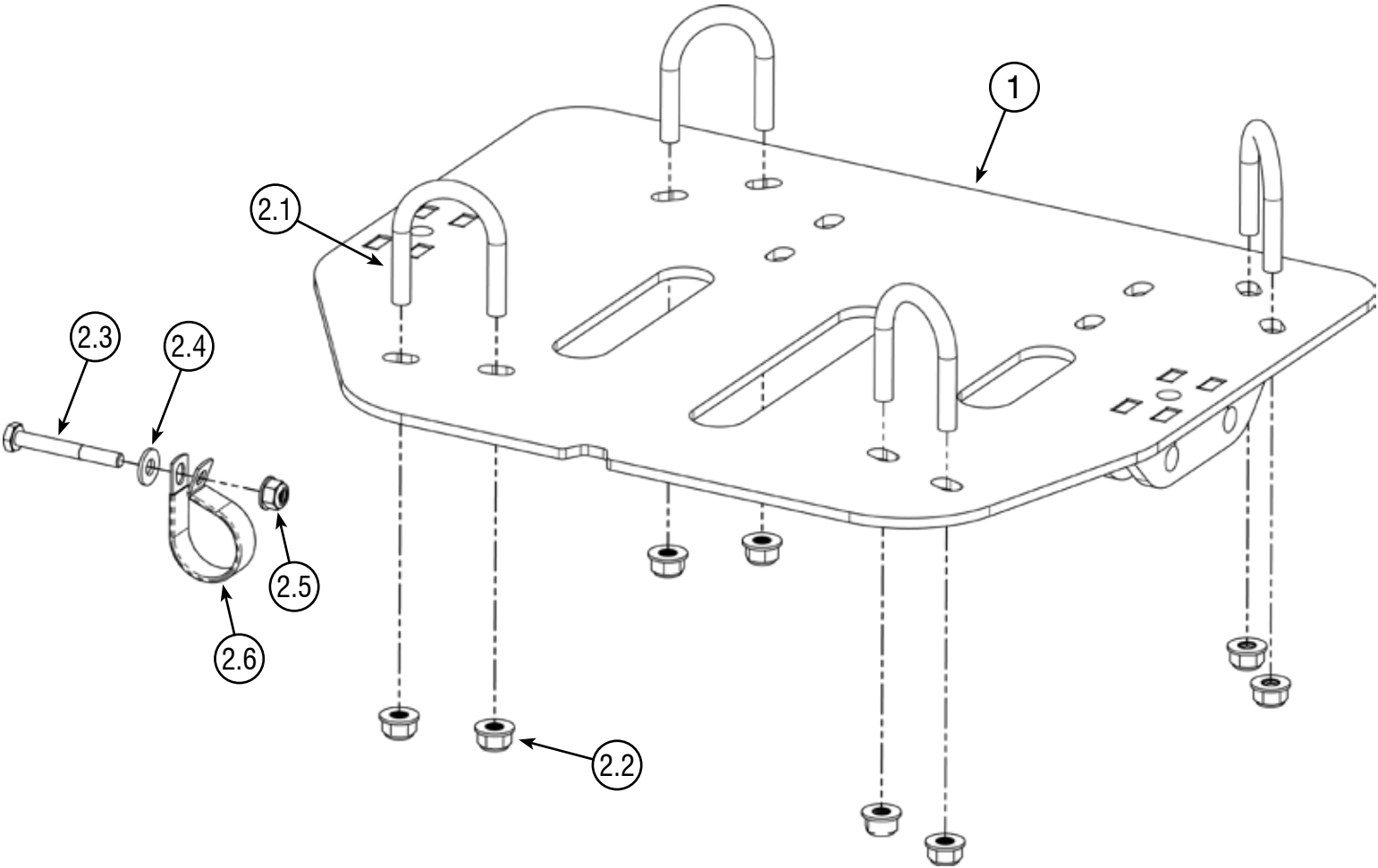


SPORTSMAN XP/SCRAMBLER

Plow Mount

PART #106665 Rev A



Kit Components:

Item #	Qty.	Description	Item #	Qty.	Description
1	1	Plow Mount (106667)	2.3	1	1/4"-20 x 2" Hex Bolt
2	1	Hardware Kit (HK-113)	2.4	1	1/4" Flat Washer
2.1	4	U Bolt 5/16"-18 x 1" x 1-3/8" x 2" (P800269)	2.5	1	1/4"-20 Hex Nut Flange Nylock
2.2	8	5/16"-18 Hex Nut Flange Nylock	2.6	1	1 1/4" Vinyl-Coated Loop Clamp (P800270)



INSTALLATION INSTRUCTIONS

Notice

Torque bolts to ANSI Specs (or OEM specs if applicable), unless otherwise stated. After the first use and at the start of each season, check torque.

Note: Make sure all hardware needed to complete this mount is in the package. Thoroughly read through and understand the instructions before installing.

Installation Instructions

1. Take out 4 skid plate bolts (A) and 2 inner fender plastic fasteners (A) from the middle skid plate. See **Figure 1**.
2. Attach the P-Clip (2.6) to the tube frame at location (B) as shown in **Figures 1, 2, and 3**. You'll need to trim the tab at (C) to fully install the P-Clip. Use bolt (2.3), washer (2.4), and nut (2.5) to secure it.
3. Place u-bolts (2.1) on machine frame as shown in **Figures 3 and 4**. There are two locations for the rear u-bolts depending on the model of machine. Use widest spacing possible when installing the u bolts.
4. Loosely attach the mount plate (1) to the frame using the u-bolts (2.1) and nuts (2.2). See **Figure 5**.
5. Center the mount plate on the machine. Tighten all nuts, ensuring the u-bolt ends are even.

