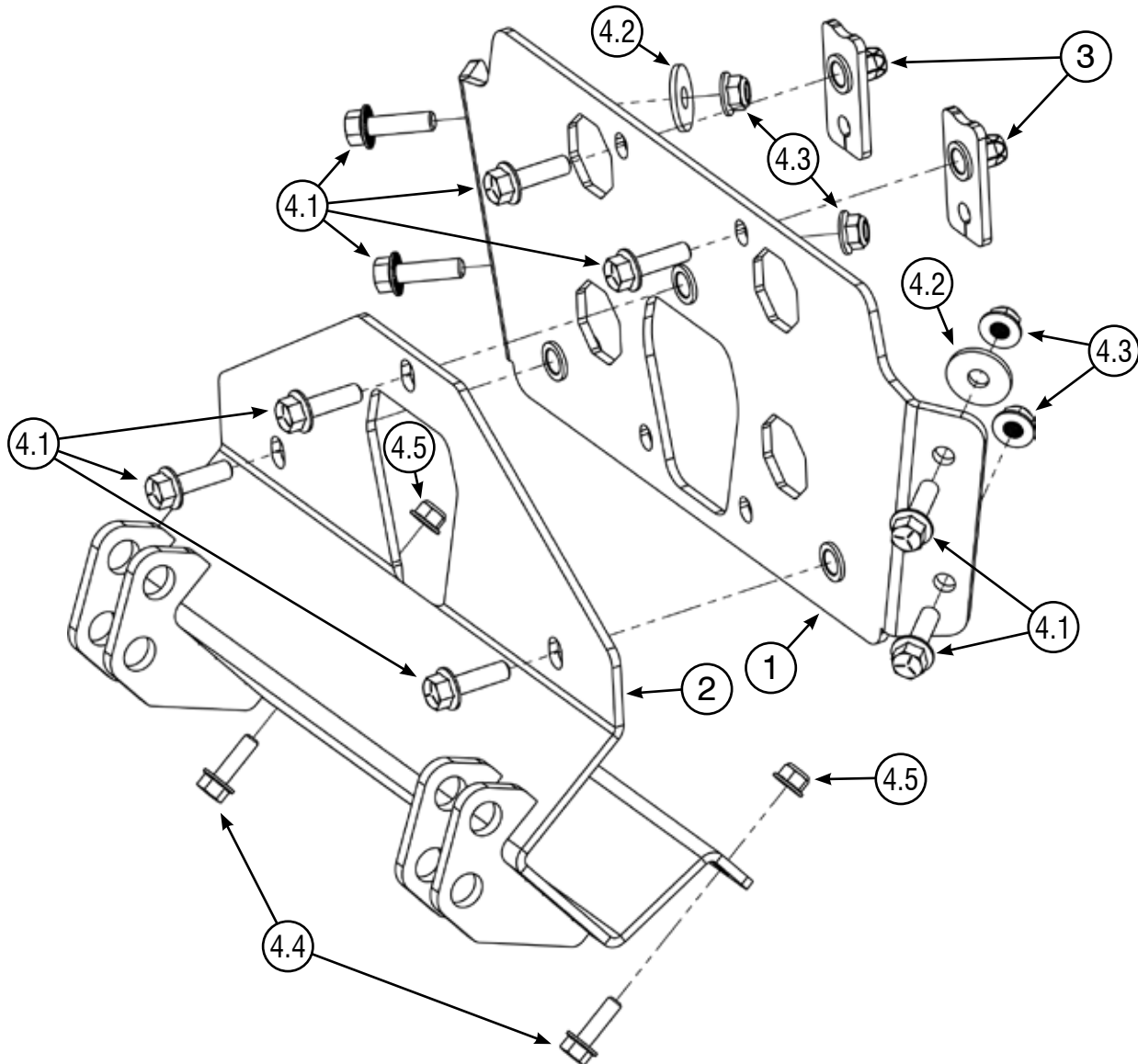


DEFENDER HD11 - 2 PIECE

Plow Mount

PART #106750 Rev A



Kit Components:

| Item # | Qty. | Description | Item # | Qty. | Description |
|--------|------|---------------------------------|--------|------|----------------------------------|
| 1 | 1 | Frame Mount (106753) | 4.2 | 2 | 3/8" Fender Washer (.125" Thick) |
| 2 | 1 | Seasonal Plow Mount (106751) | 4.3 | 4 | 3/8"-16 Hex Nut Flange Nylock |
| 3 | 2 | Nut Plate (105783-R) | 4.4 | 2 | 5/16"-18 X 1.00" Hex Bolt Flange |
| 4 | 1 | Hardware Kit (HK-460) | 4.5 | 2 | 5/16"-18 Hex Nut Flange Nylock |
| 4.1 | 9 | 3/8"-16 X 1.25" Hex Bolt Flange | | | |



INSTALLATION INSTRUCTIONS

Notice

Torque bolts to ANSI Specs (or OEM specs if applicable), unless otherwise stated. After the first use and at the start of each season, check torque.

Note: Make sure all hardware needed to complete this mount is in the package. Thoroughly read through and understand the instructions before installing.

Installation Instructions

1. Locate the factory holes **(A)** on the front bulkhead of the machine. If needed, drill out holes **(A)** using a 13/32" drill bit. See **Figure 1**.
2. Align the Frame Mount **(1)** against the machine's bulkhead. Loosely install Bolts **(4.1)** by going through the top outside holes on the Frame Mount **(1)**, then through the oval-shaped holes **(B)** in the bulkhead. Loosely install Washers **(4.2)** and Nuts **(4.3)**. See **Figures 1 and 2**.
3. Insert Bolts **(4.1)** through the Frame Mount **(1)** and into the drilled holes **(A)** from **Step 1**. Loosely secure each bolt into the Nut Plates **(3)** positioned behind the bulkhead. See **Figures 1 and 2**. For positioning the Nut Plates **(3)**, see note below.

*Note: Insert the Nut Plates **(3)** through the opening **(C)** at the front of the bulkhead. Align the Nut Plates by reaching through the hex-shaped holes **(D)** on each side of the bolts. See **Figure 1**.*

4. Once Nut Plates **(3)** are started, tighten Bolts **(4.1)** at location **(A)** first, then tighten outer Bolts **(4.1)**, Washers **(4.2)**, and Nuts **(4.3)** at location **(B)**. See **Figures 1 and 2**.
5. Locate the lower holes **(E)** on the Frame Mount **(1)**. Using these holes as a template, drill through the bulkhead with a 13/32" drill bit. Install Bolts **(4.1)** through the new holes and secure with Nuts **(4.3)**. See **Figures 2 and 4**.
6. Position the Seasonal Plow Mount **(2)** onto the Frame Mount **(1)**. Loosely install Bolts **(4.1)** into the pre-installed HD Rivnuts on the Frame Mount. See **Figures 3 and 4**.
7. Install Bolts **(4.4)** through the bottom of the Plow Mount **(2)** and into the matching holes **(F)** on the underside of the frame. Secure using Nuts **(4.5)**. See **Figures 1 and 3**.
8. With all hardware started, tighten all bolts and nuts evenly.
9. For maximum ground clearance, remove the Seasonal Plow Mount **(2)** when not in use during plowing season.

