

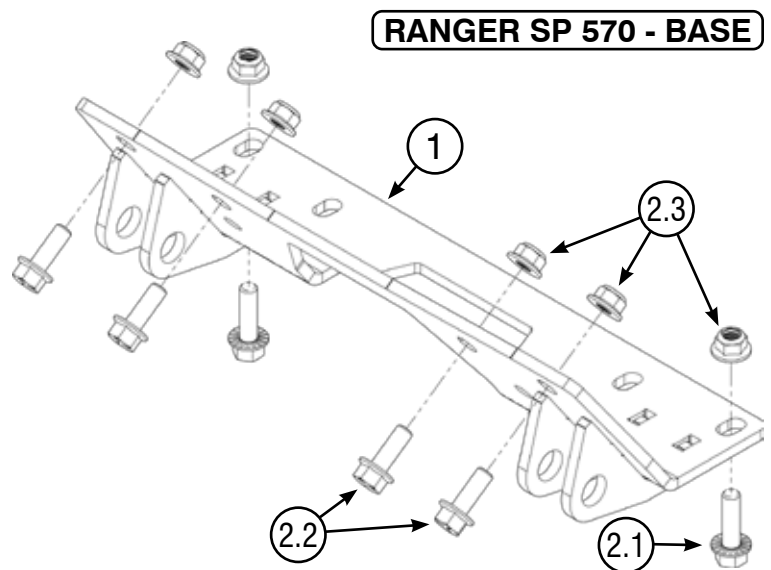
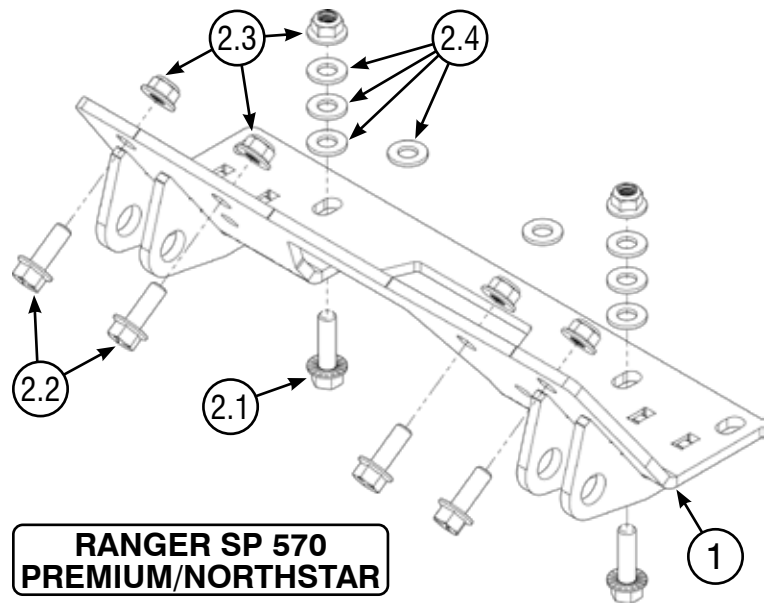
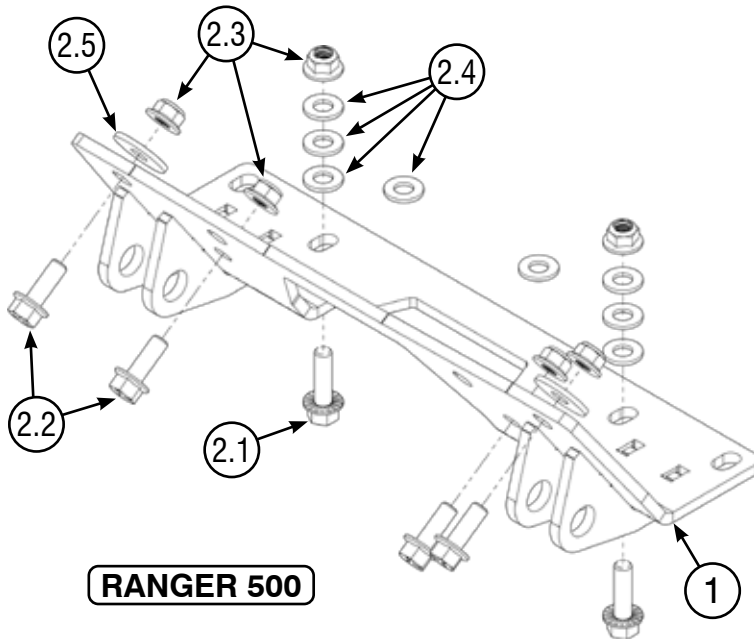
POLARIS RANGER 500/570

Plow Mount

PART #106755 Rev A

⚠ USING WASHERS AS SPACERS ⚠

Flat washers (2.4) will be used as spacers between the Plow Mount (1) and the front bumper. The exact number of washer needed may differ on each machine.



Kit Components:

Item #	Qty.	Description	Item #	Qty.	Description
1	1	Plow Mount (106756)	2.3	6	3/8"-16 Hex Nut Flange Nylock
2	1	Hardware Kit (HK-413)	2.4	8	3/8" Flat Washer SAE
2.1	2	3/8"-16 X 1.25" Hex Bolt Flange	2.5	2	3/8" Fender Washer - 1.25" x .125"
2.2	4	3/8"-16 X 1.00" Hex Bolt Flange			



INSTALLATION INSTRUCTIONS

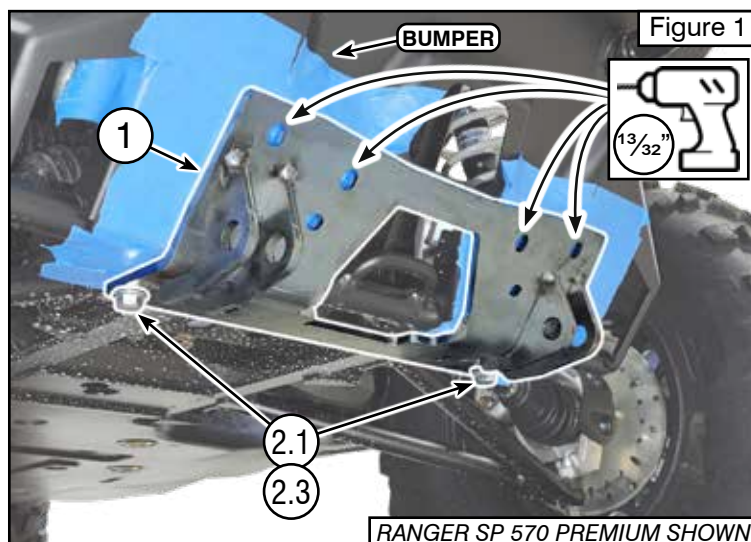
Notice

Torque bolts to ANSI Specs (or OEM specs if applicable), unless otherwise stated. After the first use and at the start of each season, check torque.

Note: Make sure all hardware needed to complete this mount is in the package. Thoroughly read through and understand the instructions before installing.

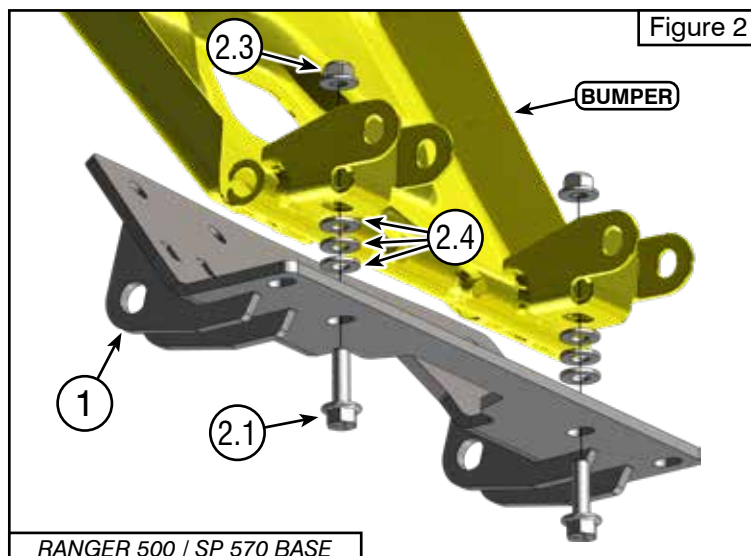
Ranger SP 570 - Premium/Northstar Models

1. Position the Plow Mount (1) against the bottom of the front bumper. Loosely install bolts (2.1) and nuts (2.3) in the bottom outer holes. See Figure 1.
2. **Refer to the Hole Drill Locations below. Confirm the correct holes before drilling.** Hold the mount tight to the bumper and use it as a template to drill the holes with a 13/32" bit. Install bolts (2.2) and nuts (2.3). See Figure 1.
3. Tighten all hardware evenly.



Ranger 500/SP 570 - Base Model

4. Position the Plow Mount (1) against the bottom of the front bumper. Install washers (2.4) as spacers between the mount and the bumper until the mount sits flat and is fully supported. See Figures 2 and 3.
5. **Ranger 500 Only:** Install the top outer bolts (2.2) through the Plow Mount (1) and the aligned hole in the bumper. Place the large fender washers (2.5) behind the bumper and secure with Nuts (2.3). See Figure 3.
6. **See Hole Drill Locations below. Confirm the correct hole locations before drilling.** With the Plow Mount (1) held tightly against the bumper, use it as a template and drill the required holes using a 13/32" drill bit. Install bolts (2.2) and nuts (2.3) in the drilled holes.
7. Tighten all hardware evenly.



HOLE DRILL LOCATIONS

Use Plow Mount (1) as a template when drilling holes.

