

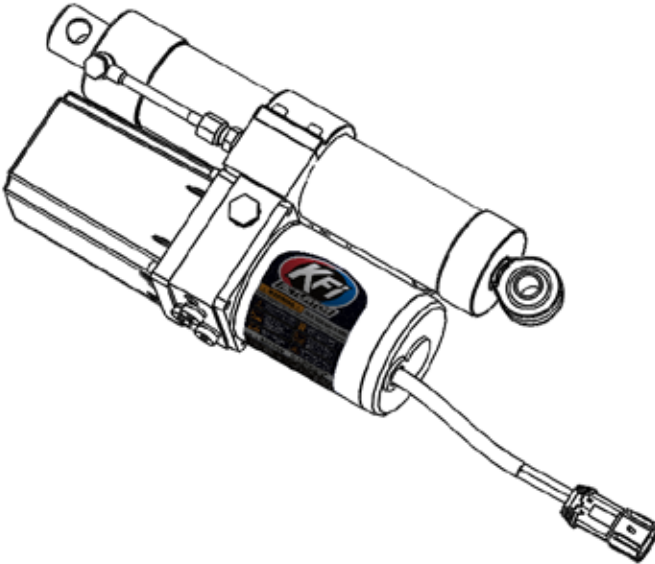


OPERATOR'S MANUAL

MODEL #ACT203

ACTUATOR

SERIAL NO. LABEL



  **1-877-346-2050**

or visit www.kfiproductions.com

READ AND SAVE THIS MANUAL. This manual contains important safety precautions which should be read and understood before operating the product. Failure to do so could result in serious injury. This manual should remain with the product. Specifications, descriptions, and illustrations in this manual are as accurate as known at the time of publication, but are subject to change without notice.

TABLE OF CONTENTS

Storage and Service.1

Important Safety Instructions.2

Introduction.3

Controls and Features4

Service Parts.5

Kit Components.6

Warranty.7

Registration Card.8

Contact Info / Safety Definitions.10

STORAGE AND SERVICE

NOTICE

This hydraulic actuator uses an electric motor. Electric motors should be completely dried before being stored in a low humidity, temperature controlled environment whenever possible. Operating the actuator occasionally during the off-season can help the motor maintain function.

NOTICE

The hydraulic system is sealed and should only be serviced by KFI Products. Opening the hydraulic side of this unit will introduce air into the system. Special tools are required to bleed the actuator properly.

NOTICE

Keep your original pin for angling the blade. If this actuator needs service, your plow system can be angled manually with the original pin, a service pin, or a 9/16" bolt.

IMPORTANT SAFETY INSTRUCTIONS

⚠ CAUTION

CAUTION indicates a hazardous situation which, if not avoided, could result in minor or moderate injury.

The KFI Actuator, plow system, including the blade and push tube, is designed to be used with UTV applications. Due to the size and weight of the machine, failing to follow the below safety rules will greatly increase the chances of damaging your actuator, plow system, machine and/or winch (if applicable). KFI will not be liable for any bending of materials as it is not caused by imperfections or defects in the material but by failing to follow these safety rules:

- Do not exceed 5 MPH, even with the blade raised.
- Before every use make sure that all nuts and bolts are tightened per installation instructions.
- Never operate this KFI product with missing or damaged parts.
- Drive slowly over bumpy and rough terrain, driving fast could cause damage to actuator and/or (if applicable) plow.
- Never raise the plow above point of contact as it could cause damage to machine, actuator or winch (if applicable).
- Always perform regular inspections and maintenance on plow system and hardware before use.
- Operate with extreme caution on slopes, steep grades, and rough terrain.
- Be aware of any possible hidden objects under the snow.
- Do not ram the blade into the snow pile.

⚠ WARNING

Cancer and Reproductive Harm -
www.P65Warnings.ca.gov

⚠ WARNING

Do not exceed the rated capacity.

⚠ DANGER

Do not use this actuator for lifting or moving people or animals.

⚠ DANGER

Keep yourself and others a safe distance to the side of the actuator when in use.

⚠ DANGER

Never step over or near an actuator under load.

⚠ WARNING

The actuator may break before the motor stalls.

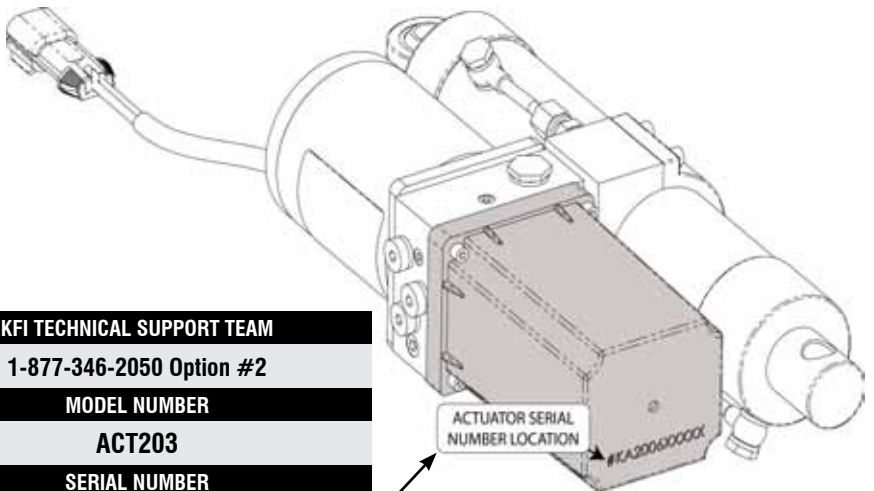
INTRODUCTION

Congratulations on your purchase of a KFI Products Actuator (Kappers Fabricating, Inc.). KFI designs, builds, and supports all of our products to strict specifications and guidelines. With proper product knowledge, safe use, regular maintenance, and proper storage, this product should bring years of satisfying service. Every effort has been made to ensure the accuracy and completeness of the information in this manual at the time of publication, and we reserve the right to change, alter and/or improve the product and this document at any time without prior notice.

Since KFI highly values how our products are designed, manufactured, operated, serviced, and also highly value your safety and the safety of others, we would like you to take the time to review this product manual and other product materials thoroughly and be fully aware and knowledgeable of the assembly, operation, dangers and maintenance of the product before use.

Fully familiarize yourself, and make sure others who plan on operating the product fully familiarize themselves too, with the proper safety and operation procedures before each use. Please always exercise common sense and always err on the side of caution when operating the product to ensure no accident, property damage, or injury occurs. We want you to continue to use and be satisfied with your KFI product for years to come.

When contacting KFI about parts and/or service, you will need to supply the complete model and serial numbers of your product. Transcribe the information found on your product's nameplate label to the table below.



SERIAL NUMBER LOCATION

KFI TECHNICAL SUPPORT TEAM
1-877-346-2050 Option #2
MODEL NUMBER
ACT203
SERIAL NUMBER
DATE OF PURCHASE
PURCHASE LOCATION



WARNING RISK OF SEVERE INJURY OR DEATH:
 READ ALL PRECAUTIONS, WARNINGS, AND INSTRUCTION MANUALS BEFORE OPERATING.

- KEEP BYSTANDERS CLEAR FROM PLOW AT ALL TIMES
- DO NOT EXCEED 5 MPH WITH PLOW INSTALLED
- DRIVE SLOWLY OVER BUMPY / ROUGH TERRAIN. BEWARE OF OBSTRUCTIONS.
- NEVER RAISE PLOW OR ACTUATOR PAST POINT OF CONTACT IT MAY DAMAGE YOUR PLOW SYSTEM.
- DO NOT RAM PLOW INTO THE SNOW.
- DO NOT PLACE HANDS OR FEET ON ACTUATOR. STAY CLEAR OF MOVING PARTS.

MODEL NO: ACT203 **KFI PLOW ACTUATOR**

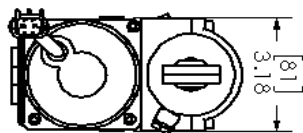
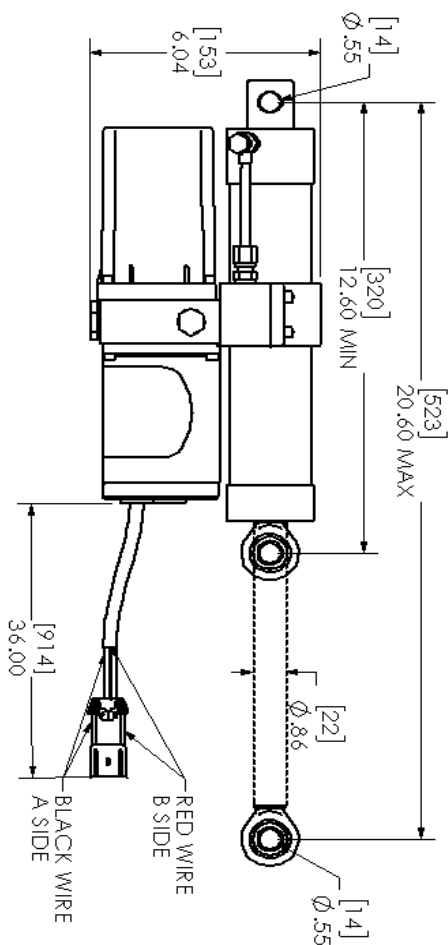
PERFORMANCE SPECS:	
VOLTAGE: DC 12V	MAX LOAD (PUSH): 1000 kg / 2205 lbs.
POWER: 0.3 kW / .4 HP	MAX LOAD (PULL): 700 kg / 1543 lbs.
CURRENT: 25A	STROKE: 203 MM / 8.00 IN.
PRESSURE: 15 MPa / 2175 PSI	HYDRAULIC OIL: 46R-LV (ISO 46)

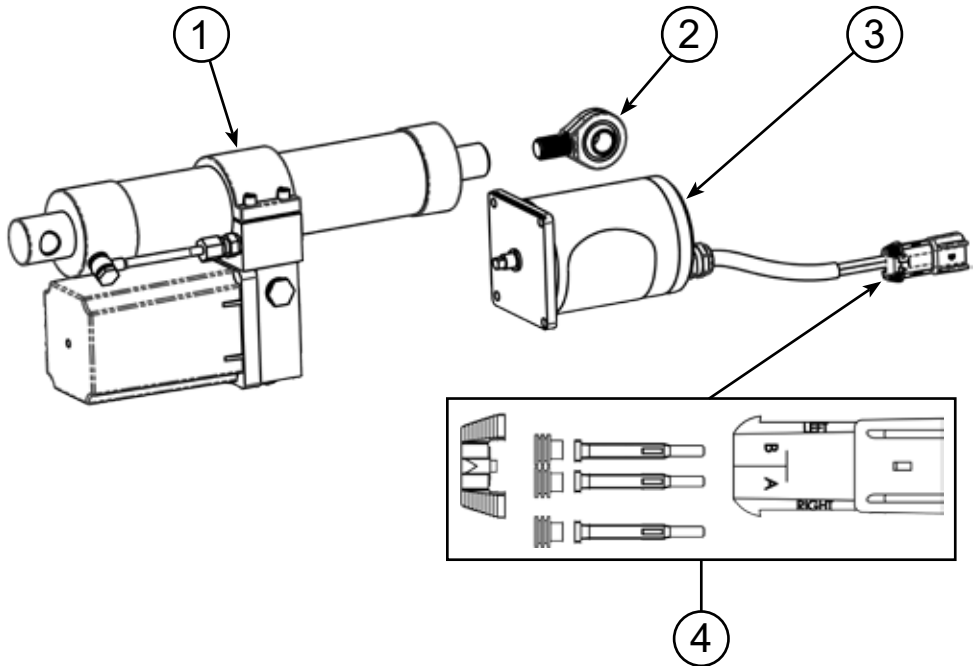
PARTS & SERVICE:
 1-877-346-2050
 WWW.KFIPRODUCTS.COM

SOLD & DISTRIBUTED BY:
 KAPPERS FABRICATING, INC.
 SPRING VALLEY, MN

WARNING:
 Control and Programming Time
 www.P203actuator.com

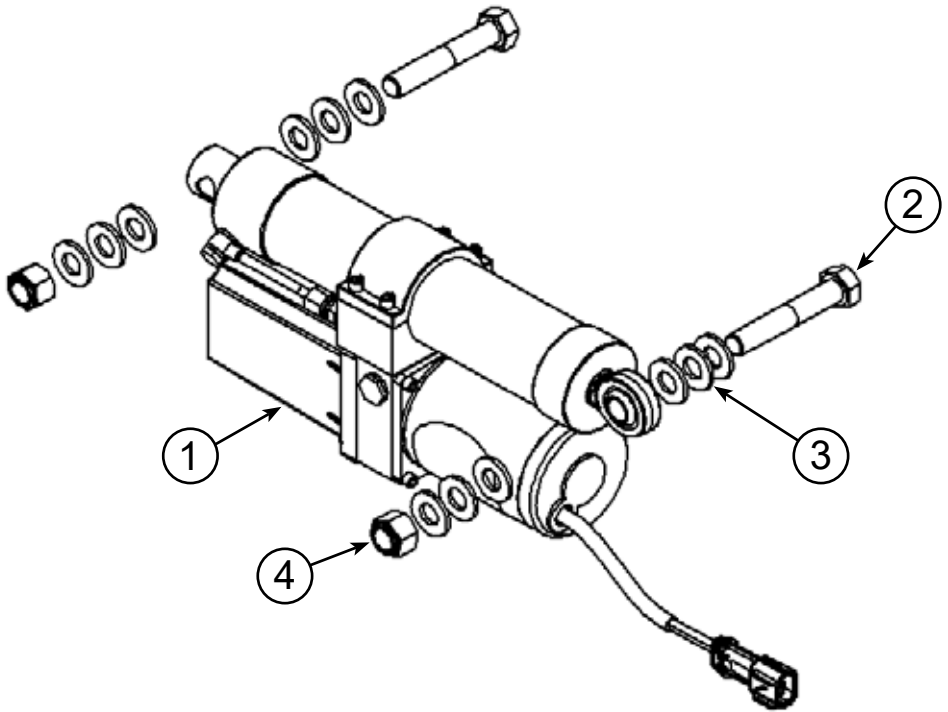
MADE IN CHINA





ACTUATOR SERVICE PARTS LIST

Item #	Part #	Description	Qty
1	ACT-0010	ACT-0010 ACTUATOR	1
2	ACT-0003	ROD END REPLACEMENT - M14x2	1
3	ACT-0004	MOTOR REPLACEMENT- TG12V HYDRAULIC ACTUATOR	1
4	PM-M280-2	ACTUATOR REPLACEMENT PLUG - METRI-PACK 280 MALE	1



KIT COMPONENTS:

Item #	Qty.	Description
1	1	ACT-0010 ACTUATOR
2	2	M14-2.00 X 80 HEX BOLT GR8.8 ZINC
3	12	M14 FLAT WASHER ZINC
4	2	M14 x 2.00 HEX NUT NYLOCK ZINC

Warranty

KAPPERS FABRICATING, INC.
1 YEAR LIMITED WARRANTY

Warranty Qualifications

Kappers Fabricating Inc. (KFI) will register this warranty upon receipt of your Warranty Registration Card and a copy of your sales receipt from one of KFI's resale locations as proof of purchase. Please submit your warranty registration and your proof of purchase within Fifteen (15) days of the date of purchase.

Repair/Replacement Warranty

KFI warrants to the original purchaser that mechanical and electrical components will be free of defects in material and workmanship for a period of (1) year (90 days for commercial use); from the original date of purchase. Transportation charges on product submitted for repair or replacement under this warranty are the sole responsibility of the purchaser. This warranty only applies to the original purchaser and is not transferable.

Do Not Return The Unit To The Place Of Purchase

Contact KFI's Technical Service and KFI will troubleshoot any issue via phone or e-mail. If the problem is not corrected by this method, KFI will, at its option, authorize evaluation, repair or replacement of the defective part or component at a KFI Service Center. KFI will provide you with a case number for warranty service. Please keep it for future reference. Repairs or replacements without prior authorization, or at an unauthorized repair facility, will not be covered by this warranty.

Warranty Exclusions

This warranty does not cover the following repairs and equipment:

Normal Wear

Hydraulic Actuators may need periodic parts and service to perform well. This warranty does not cover repair when normal use has exhausted the life of a part or the equipment as a whole.

Installation, Use and Maintenance

This warranty will not apply to parts and/or labor if this Actuator is deemed to have been misused, neglected, involved in an accident, abused, loaded beyond the actuators limits, modified, installed improperly or wired incorrectly to any electrical component. Normal maintenance is not covered by this warranty.

Other Exclusions

- The Rod End or Heim Joint Damage.
- Cosmetic defects such as paint, decals, etc.
- Accessory parts such as storage covers.
- Misuse, abuse, neglect, acts of God, terrorism and causes beyond the control of KFI.
- Problems caused by parts that are not original Kappers Fabricating Inc. parts.
- Physical Damage Due to Hard Impacts
- Water Submersion or Damage Caused by Water.

Warranty Procedure

1. Contact KFI Technical support to acquire a Return Authorization (RA) number.
2. KFI may request additional materials (such as original sales receipt, date of purchase, technical details, or photos of Product condition) prior to issuing an RA number.
3. At the discretion of KFI, Buyer shall mail, ship, or otherwise deliver to KFI the Warrantied Product, at the address noted below.

Limits of Implied Warranty and Consequential Damage

Kappers Fabricating Inc. disclaims any obligation to cover any loss of time, use of this product, freight, or any incidental or consequential claim by anyone from using this Actuator. THIS WARRANTY IS IN LIEU OF ALL OTHER WARRANTIES, EXPRESS OR IMPLIED, INCLUDING WARRANTIES OF MERCHANTABILITY OR FITNESS FOR A PARTICULAR PURPOSE

A unit provided as an exchange will be subject to the warranty of the original unit. The length of the warranty governing the exchanged unit will remain calculated by reference to the purchase date of the original unit.

This warranty gives you certain legal rights which may change from state to state. Your state may also have other rights you may be entitled to that are not listed within this warranty.

Product Registration

Please register your product with Kappers Fabricating, Inc. (KFI) within fifteen (15) days of purchase to assist us in handling any warranty issues that may arise by filling out this Registration card and submitting it with a copy of your sales receipt from one of KFI's official resellers. Failure to complete and return this Registration card does not diminish your warranty rights.

Please refer to the above section for complete terms of this warranty.

Fill out and send this section to:

KFI Products
Warranty Registration Department
721 Sata Drive, PO Box 32
Spring Valley, MN 55975, U.S.A.

WARRANTY IS NON-TRANSFERABLE

Please Print Clearly

Model # **ACT203** SERIAL # _____

Name _____

Street Address _____

City _____ State _____ Zip Code _____

Phone _____ Fax _____ Email _____

Date of Purchase _____ Authorized KFI Dealer Name _____

CONTACT INFORMATION

Address

KFI Products
Winch Customer Service
P.O. BOX 32
721 SATA DRIVE
SPRING VALLEY, MN 55975

Corporate

KAPPERS FABRICATING, INC.
P.O. BOX 32
1015 INDUSTRIAL DR.
SPRING VALLEY, MN 55975

Customer Service

Mon - Thr 8:00 AM - 5:00 PM (CST/CDT)
Fri - 7:00 AM - 1:00 PM (CST/CDT)
Toll Free: 1-877-346-2050 Opt 1
Fax No: 1-507-346-2010
E-mail: sales@kfiproducs.com

Technical Service

Mon - Thr 8:00 AM - 5:00 PM (CST/CDT)
Thr - 7:00 AM - 1:00 PM (CST/CDT)
Toll Free: 1-877-346-2050 Opt 2
E-mail: tech@kfiproducs.com

Website

<https://www.kfiproducs.com>

SAFETY DEFINITIONS

The purpose of safety symbols is to attract your attention to possible dangers. The safety symbols, and their explanations, deserve your careful attentions and understanding. The safety warnings do not by themselves eliminate any danger. The instructions or warnings they give are not substitutes for proper accident prevention measures.

DANGER

DANGER indicates a hazardous situation which, if not avoided, will result in death or serious injury.

WARNING

WARNING indicates a hazardous situation which, if not avoided, could result in death or serious injury.

CAUTION

CAUTION indicates a hazardous situation which, if not avoided, could result in minor or moderate injury.

NOTICE

NOTICE indicates information considered important, but not hazard-related (e.g., messages relating to property damage or physical injury).



1-877-346-2050

KFI PRODUCTS

P.O. BOX 32
721 SATA DRIVE
SPRING VALLEY, MN 55975

WWW.KFIPRODUCTS.COM

CORPORATE OFFICE:

KAPPERS FABRICATING, INC.
P.O. BOX 32
1015 INDUSTRIAL DR.
SPRING VALLEY, MN 55975
USA

MADE IN CHINA
©2024 KAPPERS FABRICATING, INC.