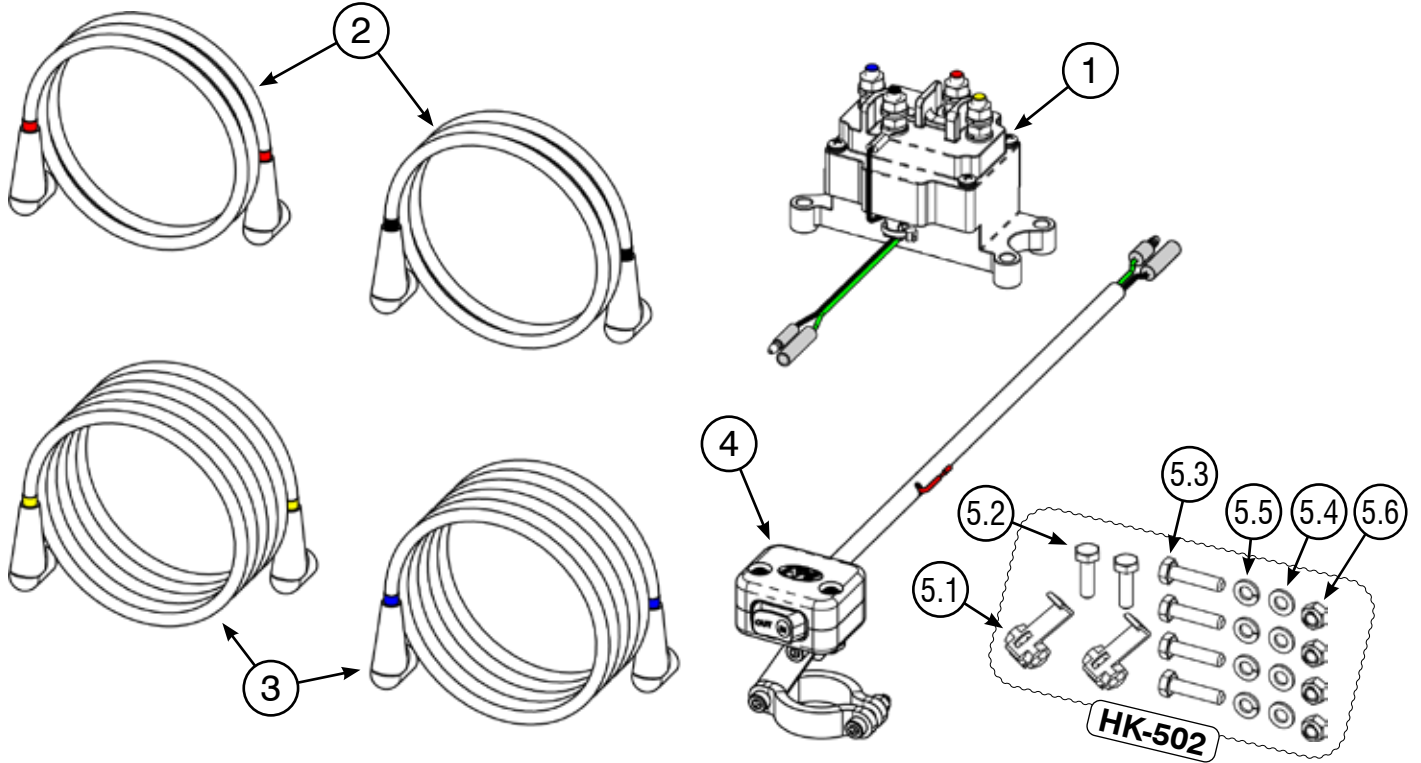


WIRING KIT - ATV

PART #: ATV-WK

Rev. B



Kit Components:

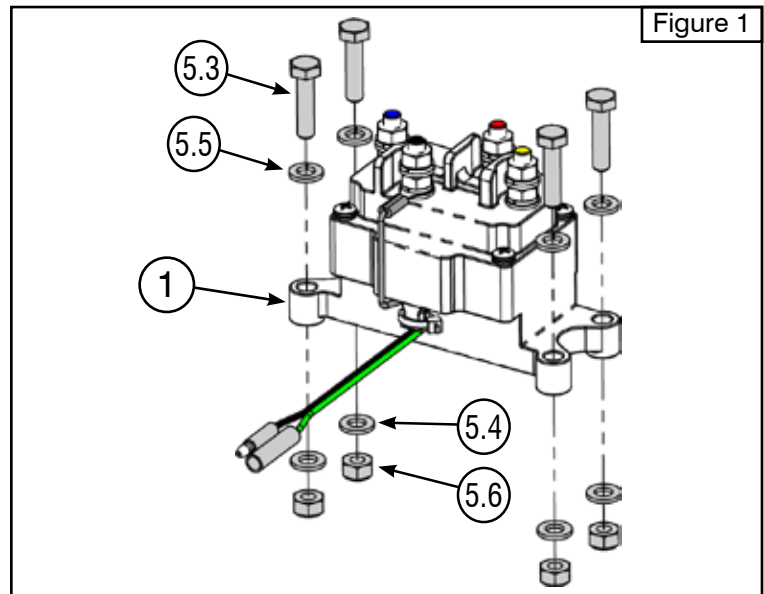
Item	Qty.	Part #	Description	Item	Qty.	Part #	Description
1	1	AS-CONT	Assault Contactor	5.1	2	HW-0001	Wire Tap
2	1	SE-WIRES-ATV-BAT	Battery Wires - 3ft - 8 AWG	5.2	2	HW-0015-B	Bolt M6 x 20
3	1	SE-WIRES-ATV-WIN	Battery Wires - 8ft - 8 AWG	5.3	4	HW-0013-B	Bolt M6 x 25
4	1	ATV-MR	Mini Rocker Switch	5.4	4	HW-0003-B	Washer Ø6
5	1	HK-502	Hardware Kit (Contactor)	5.5	4	HW-0006-B	Washer Ø6 Lock
				5.6	4	HW-0014-B	Nut M6 Nylock

INSTALLATION INSTRUCTIONS

⚠ WARNING Failure to follow specific wiring instructions may result in damage to your wiring system or equipment.

MOUNT THE CONTACTOR

- Find a location for the contactor (1). If the model specific mounting kit does not indicate a recommended contactor location, then it is recommended that the contactor be mounted close to the battery in a clean dry location. Ensure the chosen location provides sufficient clearance from all metal components. Drill mounting holes if required. Once a location is found, do not mount the contactor yet. Complete all wiring first.



INSTALL MINI ROCKER SWITCH

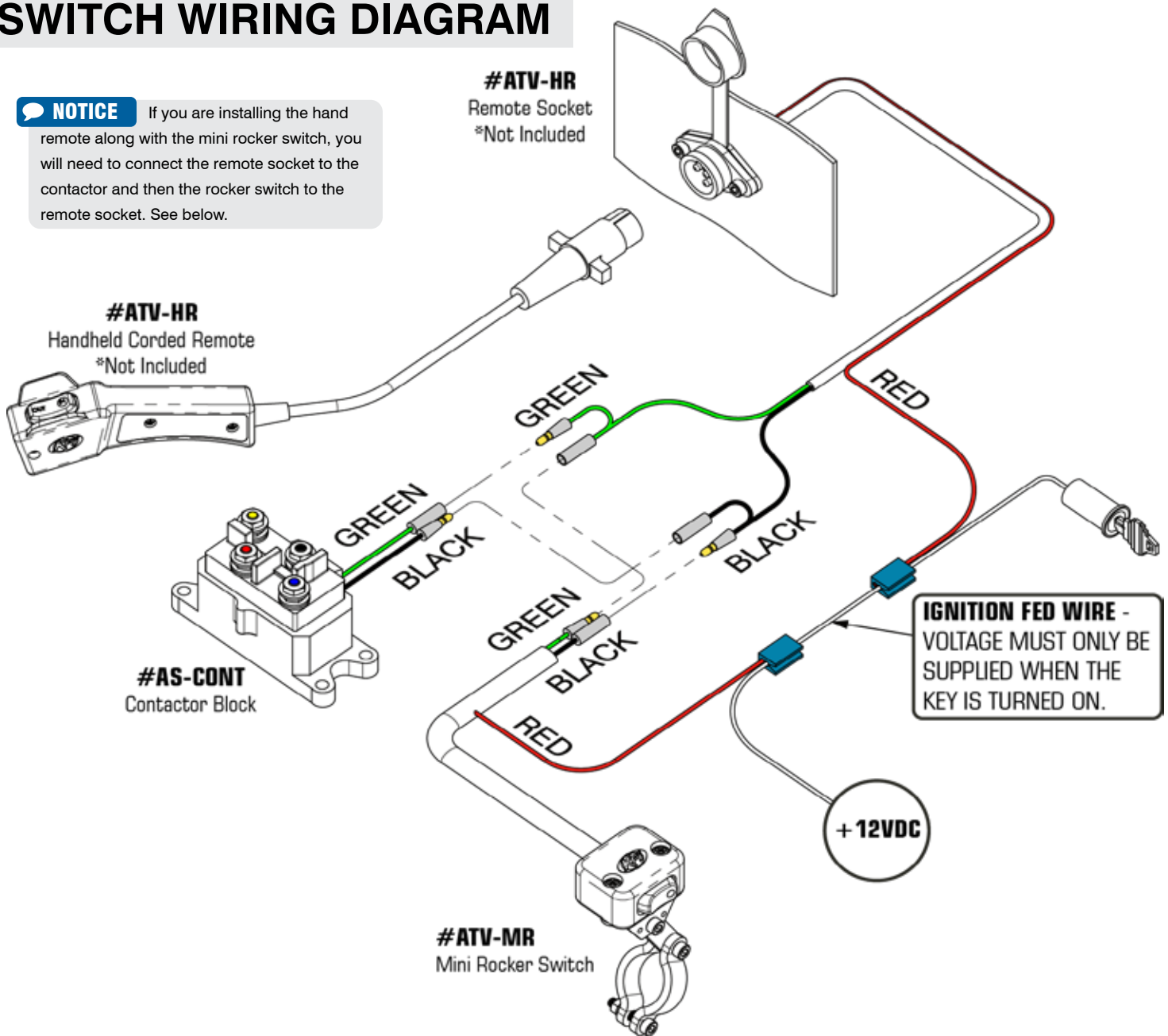
- The Handlebar Mounted Mini Rocker Switch (4) is normally installed on the left handlebar.
- Use electrical tape wrapped around the handlebar to prevent rotation of the switch mounting brackets. Do NOT clamp the switch bracket over any hoses or cables.
- Once your switch is mounted, you can route wires back to the contactor location.
- Splice the end of the red wire to an ignition controlled (keyed) power source using the supplied wire tap (5.1). You may need to use a test light or multimeter to locate a suitable wire, which should only have power when the key is in the ON position. See **Switch Wiring Diagram**.



Figure 2

SWITCH WIRING DIAGRAM

NOTICE If you are installing the hand remote along with the mini rocker switch, you will need to connect the remote socket to the contactor and then the rocker switch to the remote socket. See below.



WIRING THE WINCH

6. Connect the yellow and blue wires to the motor terminals on the winch. Route the opposite ends to the contactor location. Connect the yellow and blue wires to the contactor block (yellow to yellow, blue to blue). See **Winch Wiring Diagram**.
7. Connect the red and black wires to your contactor block (red to red, black to black). Route the opposite ends to the battery location.
8. Connect the mini rocker switch (4) to the contactor block (1) (black to black, green to green). Ensure connectors are fully seated. See **Switch Wiring Diagram**.
9. After all wiring is connected, mount the contactor using the supplied M6 hardware (5.2–5.6). See **Figure 1**.
10. Connect the battery leads from the contactor to the vehicle's battery (black to black, and red to red).
11. Place all terminal boots over the terminals and secure all cables with cable ties or electrical tape.

NOTICE Depending on the location of the contactor, you may need to use an alternate winch wiring configuration. Please see the "Alternate Winch Wiring Diagram" available on: www.kfiproductions.com

WINCH WIRING DIAGRAM

